

The Rosedalian

ROSEDALE DEVELOPMENT ASSOCIATION NEWSLETTER

www.rosedale.org

RDA and partners secure major grant to combat childhood obesity

Rosedale Development Association (RDA), together with the Rosedale Ministerial Alliance, KC Healthy Kids, and the University of Kansas Medical Center, was recently selected as a recipient of a \$225,000 two-year grant. This is a faith-based advocacy initiative to prevent childhood obesity by increasing access to healthy foods and physical activity. The Robert Wood Johnson Foundation (RWJF) received nearly 100 proposals and has recognized The Rosedale Ministerial Alliance Healthy Kids Initiative as one of 21 programs across the United States to support.

"The immense challenge we face in reversing the trend of childhood obesity is a shared responsibility. All parts of society must be engaged if we are going to succeed," said Dwayne C. Proctor, director of RWJF's Childhood Obesity Team.

Wendy Wilson, RDA Executive Director, agrees there are many factors that lead to childhood obesity and believes this alliance will serve as a catalyst to stimulate a variety of programs to make Rosedale a healthier community in which to live, work, and play. 51 percent of elementary school children in the Rosedale area are overweight or obese, which is 10 times greater than the federal government's Healthy People 2010 objective.

"It is critical for us to be able to modify the risk factors for overweight children in a multi-ethnic, urban, low socioeconomic community," said Wilson. "This grant will allow us to make some significant strides towards improving transportation, infrastructure, and public services supporting active lifestyles and healthy eating."

Rosedale plans to advocate for a

variety of programs, including: creating a bicycle and pedestrian network; improving transit options; and planting community gardens to provide healthy, affordable food. Rosedale will contract with the University of Kansas Medical Center to provide data and research analysis. Activities will encompass economic, health, and fiscal policy analysis, community assessments, and program evaluation support.

"We can't encourage students to walk to school without sidewalks or tell them to eat healthy food without a grocery store or market within the boundaries of our community," said Wilson. "Through focus groups and public meetings we will determine the necessary strategies to achieve the mission of this program."

For more information, visit: www.rosedale.org and www.rwjf.org. 


It's time to renew your RDA membership

RDA is a membership organization meaning that it truly belongs to you, our members. By becoming a member, you have a voice in shaping RDA's priorities and in improving the quality of life in your neighborhood.

We receive support from residents through a \$15/year membership and from businesses through a \$100/year membership. In this tough economic climate, new and renewing membership contributions are even more critical in keeping our doors open and continuing to build a healthy and strong community in Rosedale.

All RDA members receive our monthly newsletter, which provides up-to-date information on issues, events, and programs affecting the community. RDA also serves as an advocate and resource center on behalf of its members.

Please take the time to cut out and complete the membership form on page 3. Then, mail the form to our office (1403 Southwest Blvd., KC, KS 66103), along with your contribution.

Thanks for your support! 

Yes you can ...

VOTE!

Local elections in Kansas City, Kan. and Wyandotte County are just around the corner. These elections are arguably more important than national elections in terms of their relevance to your daily lives, on a grassroots level. It's critical that we have a high voter turnout; our city/county elected officials will be more responsive to our concerns when we vote in large numbers.

Positions up for election include: Mayor/CEO, U.G. Commission, Sheriff, Register of Deeds, Board of Public Utilities (BPU), KCK Community College Board of Trustees, and KCK Board of Education.

Primary Election: March 3

General Election: April 7

For more information, contact the Wyandotte Co. election office: (913) 573-8500.

Your new RDA Board members

At its December meeting, the RDA Board of Directors approved the slate of nominees and officers to the Board for 2009. In addition, the community elected two new Board members to represent the business and residential sectors.

Officers for 2009 are: Phil Gardos (President); Eldon Masters (Vice-President, Business); Robert Kaufman (Vice-President, Residential); John Kornhaus (Treasurer); and Paul Davidson (Secretary).

For a complete list of current Board members, visit: www.rosedaleassociation.org/who_board.htm.

To learn about the new members of the Board, read below:

Kent Best is a stockholder and property owner of KC Winnelson, a plumbing supplies wholesale company located in Rosedale. He is also an Area Leader for Winwholesale, Inc., the national parent company of KC Winnelson, in which he oversees company operations in four Midwestern states. Kent is a former member of the RDA Board and is eager to join again. Kent will represent the business community.

Phil Gardos is a long-time Rosedale resident and former member of the RDA Board. He is now retired from the U.S. Postal Service. Phil attends Holy Name church in Rosedale and is known around

the community for his "green thumb" (he is an avid gardener and maintains several garden plots). Phil will replace Stevie Reynolds as Board President.

John Kornhaus is the Vice President of Finance for Dean Realty Co., a large company with offices in Cambridge Business Park in Rosedale. John will bring his finance skills to the Board, as he takes over as Treasurer.

John Lambertson is currently a photographer for the Nelson-Atkins Museum of Art and an adjunct professor of studio and digital photography at Johnson County Community

College. He received a B.F.A. from the Kansas City Art Institute and a Master's in Electronic Media from UMKC. He is a resident of the Friendship Heights neighborhood in Rosedale. John will represent the residential community.

Mark Mohler is the owner of Built-More Pools, a swimming pool service and repair shop based in Rosedale. He has lived in Rosedale for 15 years. Mark is a graduate of Leadership 2000, a Wyandotte County leadership training program, and currently sits on the U.G. Planning & Zoning Commission. ☞

RDA's youth service-learning program increases impact

Building on the success of a similar pilot project last spring, RDA has instituted a new after-school youth program called the Rosedale Youth Volunteer Club. The program, which engages 5th-graders in service-learning projects at school and in the community, is designed to increase civic awareness and community involvement among participants.

Program sessions are held once a month on Wednesday afternoons at Frank Rushton and T.A. Edison elementary schools, both of which are public schools in Rosedale. There are currently 8 students enrolled at each school. Each month, the group studies a different topic of community interest and then completes a service project related to that topic. Some sessions are held on-site at the school; during others, the group takes field trips to off-site locations.

The Youth Volunteer Club is an outgrowth of an RDA pilot project in

March-May 2008, during which a small group of students at Frank Rushton participated in various service-learning projects. Due to the pilot's success, RDA decided to expand the program for the current school year.

Joel Goering, RDA staff member, along with two adult volunteers – Sarah Stueve and Shannon Eberlein – manage the program, which is funded through RDA's youth programming budget. Donors include the Rosedale Optimist Club, among others.

Examples of the Volunteer Club's service projects this year are: making holiday cards for seniors at the Landon Center on Aging; sorting donated canned goods at Cross-Lines and Associated Youth Services; and walking and playing with dogs up for adoption at the Pet Connection, a local no-kill animal shelter.

For more information, call the RDA office: (913) 677-5097. ☞

ROSEDALE DEVELOPMENT ASSOCIATION

Working in partnership with residents, businesses, and institutions to build a strong and healthy community and to improve the quality of life for those who live, work, and play in Rosedale.

1403 Southwest Blvd.
Kansas City, Kan. 66103
Phone: (913) 677-5097
Fax: (913) 677-3437
www.rosedale.org
Monday-Friday, 9 a.m.-5 p.m.

Wendy Wilson, Executive Director

Linda Wright, Office Manager

Joel Goering, Community Organizer

Board of Directors,
www.rosedale.org/who_board.htm

Newsletter design by Elizabeth Johnston, www.lizzardbrand.com



JOEL GOERING PHOTO

The Rosedale Youth Volunteer Club participates in a variety of service learning projects throughout the community. Here (from left to right), Dominick Davidson, Alfredo Gutierrez, and Clarissa Bilbao of Frank Rushton Elementary prepare to take two dogs from the Pet Connection animal shelter for a much-appreciated walk on Jan. 28. The dogs, who are up for adoption at the shelter, depend on volunteers and staff for daily exercise. In addition to volunteering at the shelter, the youth learned about the importance of responsible pet ownership and treating animals with dignity and respect.

Rosedale Briefs

Studio 804 construction update

The students from Studio 804 at the University of Kansas have begun construction on their sustainable residence at 3716 Springfield St. the Rosedale community. Moving with an extremely accelerated timeline, the house is anticipated to be completed in May 2009. It is projected to be the first LEED-Platinum home in the state of Kansas. The Studio welcomes anyone in Rosedale who is interested to stop by and observe construction of the modern sustainable residence. You can monitor our progress at www.Studio804.com.

Congratulations to Rosedalian Harold Hepfer ...

... for going above and beyond the call of duty in serving as a bell ringer for the Salvation Army. In his 25+ years as a bell ringer, Harold has raised more than \$100,000 for the charity. This year, he raised more than \$26,000 at a Wal-Mart in the Northland, while working six days a week, 8-10 hours each day. For his efforts, Harold was recently featured in the *Kansas City Star*, *Chicago Tribune*, and on several local TV news channels.

Rosedale Obituary

Prima Reyes, a Rosedale resident of 47 years, died Feb. 8 at KU Medical Center. She was 84 years old. Prima was a 1942 graduate of Wyandotte High School and worked for Commerce Bank for many years. She played baseball for the Azteca Baseball Club in the 1940s, as well. In retirement, she often volunteered as a poll worker during elections.

CVS Pharmacy update

The developers of a proposed CVS Pharmacy at the southwest corner of 43rd Ave. and Rainbow Blvd. (site of the former Quik Trip gas station) have scheduled a meeting with the public to discuss revisions to their original plan on **Feb. 24**, starting at 7:15 p.m. at Our Saviour Lutheran Church (4153 Rainbow Blvd.). In addition, the project has been placed on the **March 9** meeting agenda of the Planning & Zoning Commission. RDA encourages concerned residents and business owners to attend both meetings.

Rosedale History Quiz

In each issue of *The Rosedalian*, we will publish a Rosedale historical photograph along with an accompanying question. The first person to answer the question correctly will receive a prize. Submissions must be e-mailed to: rosedalehistoryquiz@yahoo.com or called in to the RDA office: (913) 677-5097. Please provide your name, address, and phone number. If you enjoy these historical photos, please visit: www.rosedale.org to see more.

Last month's photographs & questions:

Question: Who is this man and what is his relevance to Rosedale?

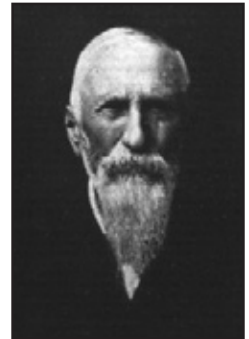
Answer: Dr. Simeon Bell, who donated land to the State of Kansas for the Eleanor Taylor Bell Memorial Hospital, named for his late wife. "Bell Memorial" was the predecessor of the current University of Kansas Hospital and University of Kansas Medical Center.

Winner: Congratulations to Rosedale resident Shirley Hill!

This month's photograph & question:

This is a photo of the Bell Memorial Hospital, named after the aforementioned Dr. Simeon Bell. When was it built?

The answer will be provided next month.



LARRY ROLLINS PHOTOS

Membership application

Annual business dues: \$100 Annual household dues: \$15

Name of business **or** name of household

Address

City

State

ZIP code

Contact person

Day phone

Evening phone

Fax

E-mail address

Please mail application, along with check made payable to:
Rosedale Development Association
1403 Southwest Blvd.
Kansas City, Kan. 66103

Rosedale Church of the Month:

Holy Name Faith Community

Address: 1001 Southwest Blvd., Kansas City, Kan. 66103, **Phone:** (913) 236-9219, **Website:** www.holynameparishkck.org
Weekend masses: Saturday, 5:30 p.m., Sunday, 8:30 a.m., 11:00 a.m.

The Holy Name Catholic church and school have been long-time fixtures in Rosedale, offering many spiritual and social services for parishioners and community members alike. The congregation recently celebrated the 100th anniversary of the start of construction of its current church building (the cornerstone was laid May 2, 1909), and next year, will celebrate the 100th anniversary of its school.

The parish was founded in 1876, with the first Mass taking place a few years before at the home of Richard Fitzgerald, an Irish settler. As more and more people moved to Rosedale in the late 1800s and early 1900s, Holy Name grew and prospered.

Throughout its history, the congregation has maintained a prominent location in Rosedale, being situated along one of the community's main streets, Southwest Blvd. As Father Jerry Spencer, lead pastor of the parish, says jokingly, "We're part of the Holy Trinity of Southwest Boulevard: Strasser Hardware, Rosedale Barbeque, and Holy Name."

The parish is involved in several



JOEL GOERING PHOTO

A beloved Rosedale leader, Father Jerry Spencer has served at Holy Name for more than four decades.

community ministries, including: serving lunch to low-income and homeless persons once a month at the Willa Gill multi-service center in downtown KCK; maintaining a food pantry on-site; visiting the homebound on a monthly basis; and participating in the Rosedale Ministerial Alliance (Father Jerry was a founding member of this

ecumenical organization).

Holy Name also sponsors an annual Ice Cream Social for the neighborhood, which will be held June 13-14 this year instead of in August as in past years.

Father Jerry has been with Holy Name since 1967. He took over as lead pastor in 1986. In addition to his duties at the church, he is also a chaplain at the University of Kansas Medical Center. There, he offers counseling and support to students, faculty, staff, patients and family members.

The parish holds several Masses throughout the week, at both KU and Holy Name. The days and times can be found on the parish website: www.holynameparishkck.org. Ash Wednesday services will be held Feb. 25 at 8:30 a.m. and 6:30 p.m.

Holy Name School, which prides itself on an ethnically and economically-diverse population, currently has about 180 students enrolled in pre-K through 8th grade. Enrollment for the 2009-10 school year begins this month and is on a first-come basis. Contact the school for more information: (913) 722-1032. ☎



**1403 Southwest Blvd.
Kansas City, Kansas 66103**

Non-Profit Org.
U.S. Postage
PAID
Permit No. 233
Kansas City, KS

RETURN SERVICE REQUESTED