

IMPORTANT PHONE NUMBERS
FOR ROSEDALE RESIDENTS AND BUSINESSES

CITY HALL

| | |
|--|----------|
| Action Center(for complaints regarding streets, code enforcement, public nuisance, etc.) | 573-5190 |
| Animal Control/Shelter | 321-1445 |
| Air Pollution Control | 321-4803 |
| Building Inspection Department | 573-5620 |
| Code Enforcement | 573-5600 |
| Community Development Division | 573-5100 |
| Disabled, Office of | 573-5680 |
| Domestic Relations (domestic problems, neighborhood feuds, destitutes, dance permits) | 573-5225 |
| Economic Development and Planning | 573-5730 |
| Engineering | 573-5700 |
| Fire Department | 371-2121 |
| Health Department | 321-4803 |
| Housing and Community Dev. Division (housing rehabilitation, emergency housing repairs, rental rehabilitation, section 312 Loan, neighborhood assistance) | 573-5100 |
| License Department | 573-5280 |
| Operation Brightside | 573-5135 |
| Parking Control | 573-5320 |
| Human Resources Department(housing discrimination, Employment discrimination landlord/tenant disputes, contract compliance) | 573-5460 |
| Parks and Recreation | 371-4418 |
| Public Works | 573-5700 |
| Senior Citizen's Center | 573-5515 |
| Street Department | 371-0183 |
| Traffic Engineer | 573-5770 |
| Water Pollution Control | 573-5400 |
| Zoning(see Economic Development & Planning) | 573-5730 |

| | |
|------------------------------|----------------------------|
| Councilman Elmer Sharp | 573-5040 or (work)831-2661 |
| Commissioner Frank Lipovitz | 573-2827 |
| All Emergencies | 911 |
| Senator John Strick | 342-3230(Wyndot Paper) |
| Representative Herman Dillon | 342-4426 |



CITY OF KANSAS CITY, KANSAS ENGINEERING DIVISION

ONE McDOWELL PLAZA 701 NORTH 7TH STREET, 66101 (913) 573-5700



STATUS OF THE RAILROAD CROSSING SOUTHWEST BOULEVARD, WEST OF TURKEY CREEK

The Burlington Northern Railroad will be closing Southwest Boulevard at their crossing just west of Turkey Creek, on or about August 13, 1990, for a two week period. During the first week the Railroad will be installing a smoother, rubberized crossing as part of upgrading of their two main line tracks. Immediately following the Railroads work, the Cities contractor will start on the street approach work, reopening Southwest Boulevard to traffic on or about August 27, 1990.

Later this year the City will continue the asphalt overlay on Southwest Boulevard from 10th Street to the improved rail crossing.

Wayne S. Moody
Assistant City Engineer

BERNIE *

Electric Wholesale, Inc

2316 So. 5th St.
Kansas City, Ks. 66103

(913) 236-6911

AUGUST
NEWSLETTER
SPONSORS



BLVD. CREDIT MOTORS
"WE FINANCE ANYONE"

340 SOUTHWEST BLVD.
KANSAS CITY, KS 66103

(913) 236-4937



COOPERS
A Pitman Moore Company

Coopers Animal Health Inc.
1201 Douglas Avenue
Kansas City
Kansas 66103-1438
(913) 321-1070
Telex CAHIKSKC 426234
FAX (913) 573-0687

Thank you

President

Luis R. Silva
President,
Silva Foods of K.C., Inc.

Vice-President, Business

Pat Stripling
Vice-President,
Twin City State Bank

Vice-President,
Residential

George Armstrong,
Whitmore district

Treasurer

Alva Shipley

Secretary

LaVone Daily, attorney
Scott & Daily, Chartered

At Large:

Pat Head
KUMC Alumni Office

Ray Pharis, resident
Frank Rushton district

Tim Hamilton, resident
Hanover Heights district

Harley Marshall
Public Information Office
Johnson Co. Comm. College

Tillar Swalm
Area resident

Gene Hill
Treasurer,
Westport Printing

Advisory Board

Brad Nicholson, developer
Major Hudson Condominiums

James Maier, principal
Rosedale Middle School

Fred Meier, President
Citizens Bank and Trust of K.C.

Ken Grenz, Pastor
Rosedale United Methodist Church

Willie Warren
Rosedale Community Improvement Grou

Captain Ron Buck
KCK Police Dept.

Michael Basey
Frank Rushton Neighborhood Assoc.

Ken Seibert, manager
Best Western Inn

Bob Friskel, staff
The Kansan

John Bergman
KCK Fire Dept.

Pat Sedlock, realtor
Pat Sedlock, Inc.

Charles Vaughan, Director
Wyandotte County Historical Society



Rosedale Developments

A monthly publication of the Rosedale Development Association

AUGUST 1990

JANSSEN GLASS & MIRROR-A BUSINESS PROFILE

Tom Janssen became acquainted with the glass industry while working in Cook Paint Company's office in the early '60s. During free moments Janssen did a bit of mechanical drawing which caught his supervisor's attention. He suggested that Janssen test for the glass department's apprenticeship program. And the rest, as they say, is history.

Janssen Glass and Mirror began operations in 1986 and the company moved to its present location at 2754 Roe Lane, last summer. I-35 drivers can easily read Janssen's large GLASS-677-5727 sign on the side of the building and Janssen greatly appreciates his business' accessibility to the greater metro area.

Janssen Glass and Mirror does every kind of glass and mirror glass, commercial and residential, except for auto glass. They will glaze glass, provide bullet resistant security installations, and do new and replacement storefront glass. They install all orders. "If it's glass we can do it."

Janssen appreciates the satisfaction of creating something he can look at when a job is done and say "there it is!!" Janssen's wife Joyce lets him create while she is the company's secretary/treasurer. The company has one additional employee.

Janssen's clients include the J.C. Penney Company, and the Blue Valley School District. They have worked at Kansas City Kansas Community College, Fort Leavenworth and the KUMC Department of History and Philosophy of Medicine.

The company recently completed all interior and storefront glass work at Boulevard Credit Motors, 340 Southwest Blvd.

* * * * *
Janssen Glass & Mirror is a member of the Rosedale Development Association.

Bulk Rate
U. S. Postage
PAID
Permit No. 233
Kansas City, Ks.

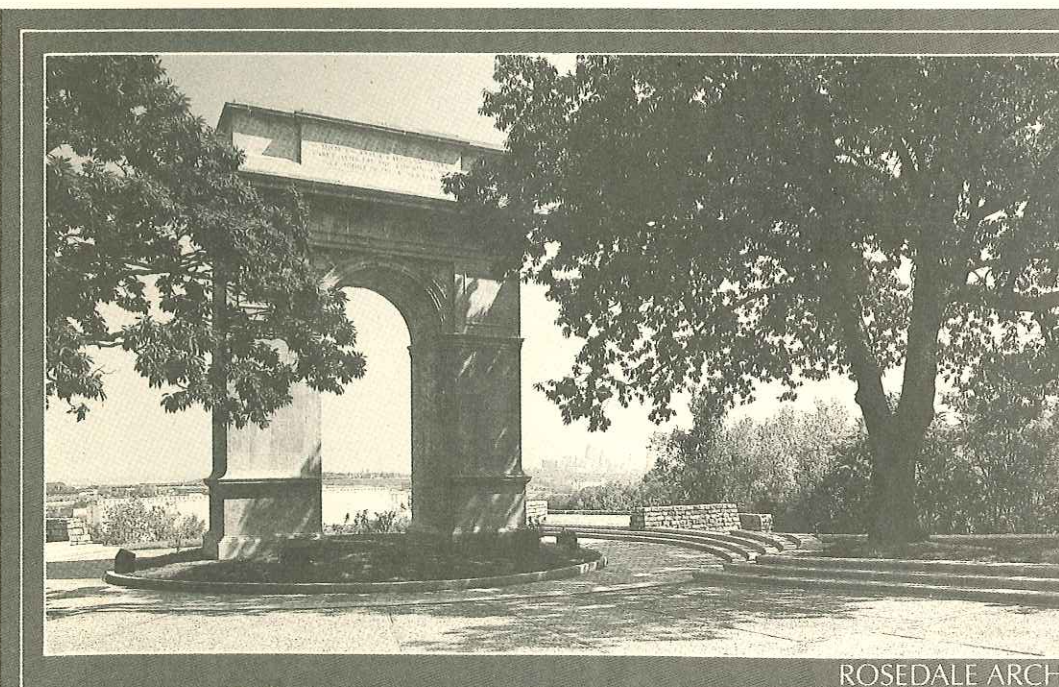


Rosedale Development Association

3930 Rainbow Boulevard, Kansas City, Kansas 66103

677-5097

Lisa W. Gray — Executive Director



ROSEDALE ARCH

KANSAS CITY, KANSAS

ROSEDALE ARCH POSTCARDS/REDEDICATION PROGRAMS STILL AVAILABLE
IN RDA OFFICE. CALL 677-5097 TODAY.

ROSEDALE TRIVIA

Test your knowledge about the Rosedale area and the history of the RDA:

In what year was the city of Rosedale platted?

Who was the first president of the RDA?

How many postal addresses does Rosedale have?

*Answers on page 5.

OPEN FORUM
THIS IS RECYCLING!?!

by
Harley Marshall

Shortly after Christmas, a year and a half ago, several pieces of playground equipment were stolen from Whitmore playground on Southwest Boulevard. They were cute animal-shaped pieces that tiny kids ride. Thieves took them because they were made of aluminum and could be sold for scrap.

It didn't take long to find the missing animals. They were in a pile in a junk yard in Armourdale. But they weren't alone. Alongside them were 39 more riding animals. By the way, each piece cost \$300. Nearly \$13,000 worth of playground equipment had been stolen, mostly from city parks, and brought to one junk yard and sold for scrap.

Come to find out, three young men, living near Whitmore Playground were guilty of the thefts. A witness had given the police enough information to track them down. When one of the thieves confessed and ratted on the other two, the case was cut and dry.

Crime might not have paid for the thieves, but the biggest culprit of all got away scot free. I'm talking about the junk yard owner.

The detective working the case said the junk yard owner's claim that he didn't know the animals were stolen was enough to make conviction difficult. So he wasn't even charged. However, it stretches the imagination that the owner could buy 43 playground animals(not exactly a common household item)from the same men and believe that everything was on the up and up. The same junk yard owner had previously bought clearly labeled city manhole covers from thieves all the while claiming he did not know they too were stolen.

The detective working the playground equipment case said that he was writing an ordinance that would make it more difficult for thieves to fence their hot goods to junk yards.

It's more that 1½ years since then, and to my knowledge no such ordinance has surfaced yet. It's way past time. The crimes haven't stopped.

If you aren't aware of the problem, look at the handrails the next time you drive over a bridge. The Seventh Street bridge over the Union Pacific tracks is a good example. Many handrails have been stolen because they are made of aluminum. At least one junk yard must still be up to its old tricks.

(The opinions expressed here are not necessarily those of the Rosedale Development Association. Rather, this section of the newsletter presents a forum for community opinions and concerns.)

RDA BOARD PROFILE-GENE HILL

Gene and Ben Hill met during high school in Jeannette, Pa. Gene entered airline school here immediately afterwards; Ben transferred from college in Pennsylvania to Kansas City Business College. Gene began working in Western Auto's accounting department upon realizing that the airline could transfer her anywhere, and she liked Kansas City. Ben and Gene married in 1959 and Ben joined Spangler Printing.

Gene had never touched a printing press until Ben installed one in their basement during 1974 to accommodate an order that Spangler couldn't handle. Ben left Spangler three years later and Spangler's top salesman began selling for the hills. They soon had more work that they could handle and began farming some out to Westport Printing.

When Ben and Gene bought Westport Printing in March 1977 they had 3 employees. By 1980 the company had 15 employees.

On January 1, 1988 Westport Printing moved to their renovated Rosedale school building (previously Kansas City Christian School) at 2440 W. 47th St. They presently employ 25 people including in-house artists, typesetting, on-site camera department, plate room and silk-screen shop. The Hills' daughter, Darla works in the sales department. Gene has handled the company books exclusively since 1979.

Also on-site are generally several very friendly, well-behaved dogs and often, grandson Benjamin. Gene owns 4 dogs and 3 parrots and has become quite involved with the Humane Society, including a term on their Board.

Gene sewed her daughter's maternity clothes and especially enjoys making children's clothes. She serves on the Board of the Master Printers Association and joined the RDA Board of Directors in 1989.

Congratulations to:

Kornfeld-Thorp Electric Company, 100 Greystone on their selection as a 1989 United States POSTAL SERVICE QUALITY SUPPLIER AWARD recipient—one of eleven companies selected out of 2000 nominees.

"This performance award is being presented by the USPS only to suppliers who have clearly demonstrated their ability and commitment to consistently deliver a quality product."—the USPS.

June Fausset, 2844 S. 8th Terrace, on publishing of her book of poems and reverie in verse and prose, titled "After-glow".

Lisa W. Gray on five years with the Rosedale Development Association this month.

Welcome to:

The Diet Center, 4316 Rainbow Blvd.
Tiffany's Flowers, Cards and Gifts, 3408 Rainbow Blvd.

Thank you to:

Maxine Harman, 4146 Cambridge, for selling Rosedale memorabilia at the Rosedale High School 20 and 30 year reunions on Saturday, July 21st.

Westwood United Super for their monthly donation of bread to the Crosslines Food Pantry.

Jean Pryor, 4717 Falmouth, member of the Rosedale High School class of '70, for suggesting that participants might be interested in purchasing Rosedale items.

Remodeling, expansion affect police

Following a major remodeling effort, the Medical Center's University Police has expanded its offices.

The expansion was needed after the recent addition of new radio equipment in the dispatch area and the department's outgrowth of its existing space, according to **Jack Pearson**, director of University Police.

While much of the department remains in the hospital basement near the dock area, Mr. Pearson said enclosing a hallway and reorganizing space have allowed the department to expand its squad room and office space.

The additional room also made it possible to move the dispatch area to the basement offices and add state-of-the-art radio equipment.

"The new radio equipment allows us to communicate by radio directly with agencies such as the Kansas City, Kan., fire and police departments," Mr. Pearson said. Prior to the addition of the new radio equipment, KU police had to contact the other agencies by telephone, a system that slowed communications.

With the new equipment, the University Police will now be the network controller for Wyandotte County's disaster frequency, Mr. Pearson added.

Telephone numbers for the various services will remain the same. The police non-emergency number is ext. 5030, the administrative offices can be reached at ext. 5133, lost and found's number is ext. 5177, 8 a.m. to 5 p.m., and the emergency number is 911.

ROSEDALE TRIVIA ANSWERS

Rosedale was platted in May 1872.

First RDA President was Phil Griffin.

Rosedale has 9,870 postal addresses.