

BOARD OF DIRECTORS

<u>President</u> Stevie Reynolds	Rob Percy	Rick Silva	Gerard Lozada
<u>Vice Presidents</u> Vicky Jansen Forrest Rhea	Paul Davidson	Lili Englebrick	Phil Gardos
<u>Treasurer</u> Pat Brown	George Kemper	Ann Weick	Michelle Robinson
<u>Secretary</u> Susie Overman	Brian Williams	Dana Coriell	Kim Cuda



Rosedale Development Association
1403 Southwest Blvd. Kansas City, KS. 66103
(913) 677-5097
Wendy Wilson-Executive Director

Non-Profit Org.
U.S. Postage
PAID
Permit No. 233
Kansas City, KS.

RETURN SERVICE REQUESTED

66103/99

MEMBERSHIP APPLICATION

Annual Business Dues—\$100 Annual Household Dues—\$15

Name of Business **OR** Name of Household _____

Address _____ City _____ State _____ Zip Code _____

Contact Person _____

Day Phone _____ Evening Phone _____ Fax _____

Please mail application along with check made payable to:
Rosedale Development Association
1403 S. W. Blvd.
Kansas City, Kansas 66103

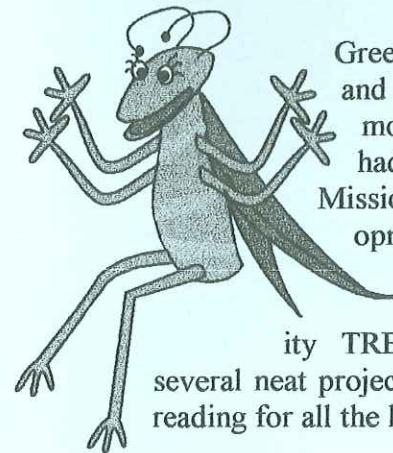
Production of this publication was made possible through support from the KCMO Neighborhood Development Department (Community Development Block Grant) and the Missouri Department of Economic Development (Neighborhood Assistance Program).



Rosedale Development Association

Working in partnership with residents, businesses, and institutions to build a strong community and improve the quality of life for those who live, work, and play in Rosedale.

July 2003



Greetings members, friends, and neighbors! Since last month's newsletter, we have had a groundbreaking for our Mission Cliffs housing development, youth have been working hard at their summer jobs, Community TREE has been completing several neat projects, and much more. Keep reading for all the latest!

I-35 & SW Blvd. Exit

According to the State KDOT office, the bridge project is scheduled to be completed 9/1/03. We know that many area businesses are struggling with this exit being closed. We have contacted KDOT several times to keep on top of the progress and to urge them to complete the project as soon as possible. Any questions or concerns that you have contact Rubin Noguera, KDOT Field Engineer Admin. @ (913) 764-4525

Sidewalk & Curb Incentive Program

The Unified Government recently approved the funding of a sidewalk/curb incentive program. The program provides supplemental funds that assist the Unified Government in covering the cost of replacing *existing* sidewalks and curbs. Those interested should call (913) 573-5414 and speak to Naser Bahadori for details about the program.

~Words of Wisdom~

Words that soak into your ears are whispered, not yelled.

Anonymous

Rainbow Park Groundbreaking and Neighborhood Barbeque

Rosedale Development Association, City Vision Ministries, Urban Coeur Development, Fannie Mae, Brotherhood Bank, the UG, and neighborhood residents came together on June 28th for the groundbreaking of the first new housing project to come to Rosedale in 20 years. The groundbreaking was held at the corner of Lake Avenue (39th Street) and Lloyd and represented the first phase - Rainbow Park Gateway, of a two-phase project. The second phase of the project will be Mission Cliffs. The groundbreaking included speakers: John Harvey (City Vision Ministries), Pastor Ruby Watson, U.S. Congressman Dennis Moore, Mayor Carol Marinovich, Commissioner John Mendez, Sandy Goodwin (Fannie Mae), Vincent Gauthier (Urban Coeur Development), and Michelle Robinson, RDA board member and resident of the project area. Also in attendance were ten RDA Board Members and a great turn out of neighborhood residents. "Today, a vision nurtured for many years and by many individuals will become reality with the breaking of ground for these new homes in Rosedale. This addition will be an invaluable resource not only for local residents and employees of KU Medical Center, but also for the entire Kansas City community," said U.S. Congressman Dennis Moore. "The participation of committed local and national partners will ensure that Mission Cliffs and Rainbow Park Gateway are the kind of superior developments with amenities that hard-working families deserve" said Mayor Carol Marinovich. The event was followed by a barbeque buffet catered by Oklahoma Joe's.

New Business

If you have driven down Merriam Lane lately you have probably noticed a new business at 1122 Merriam Lane. It's a great addition to our area with its landscaping, new sidewalks, and parking lot. Looks like the owners did a quality job in building this business!

Mosquito Control is Important

Residents are urged to take special measures to help control the mosquito population in our community. Last year, the West Nile Virus (WNV), a mosquito-borne infection, hit the Midwest including Wyandotte County. Mosquitoes spread the virus after they feed on infected birds, and then bite people. It is not spread by person-to-person contact, and there is no evidence that people can get the disease by handling infected animals. Symptoms of WNV infection in people include fever, headache, muscle weakness, and in some cases skin rash and swollen lymph glands. Most infections are mild and last a few days. Elimination of stagnant water of any type is key in a successful strategy to help diminish the breeding of mosquitoes. Here are some tips to help eliminate breeding areas:

- Dispose of tin cans, plastic containers, ceramic pots or other water-holding containers
- Pay special attention to discarded tires
- Drill holes in the bottom of outdoor recycling containers
- Keep roof gutters clean so they drain properly
- Turn over wading pools when not in use
- Aerate ornamental pools and water gardens or stock with fish
- Use landscaping to eliminate standing water
- Change water in birdbaths at least twice a week
- Cover boats and wheelbarrows or store upside down

Other helpful aids: when outdoors at nightfall or dawn wear long sleeve shirts and pants, use insect repellants containing DEET, and screen your home to prevent mosquito entry. For more information call the Health Department at (913) 573-6783. *Article by Joe Connor, Public Health Director.*

Puppet Workshops a Hit

People from all over the metropolitan area are flocking to Rosedale to help build puppets with Lisa Jorgenson of Piccadilly Productions. These puppets will be part of the Rosedale Rainbow Parade to be held on Saturday, September, 27th. Children and adults from as far out as Liberty, Olathe, and other areas have been joining Rosedale volunteers to build two twelve foot Samba dancers, a giant sun, a totem poles, and much more! The parade puppets will reflect some of the diverse cultures in Rosedale. Volunteers from H& R Block, Sharing Community, Rosedale Middle School, and

many others have come to the workshops to share their creative skills and learn new ones. Over 70 people have attended the workshops so far. There are still two workshops left: Saturday, Aug. 2 and Sept. 20th from 10:30 a.m. to 12:30 p.m. To sign up, call Amy Stock, RDA Volunteer Coordinator @ 913-677-5097.

Stormwater Affects Everyone

Stormwater – the run off from rain and melting snow – involves everyone in Wyandotte County whether you live or work in the country or the city, the suburbs or downtown, at the top of the hill or along the river valley. More than one-third of Wyandotte County homeowners have observed water pooling in yards, damaging fences, flooding houses in their neighborhoods in the last five years. At least 25 % have actually experienced floodwaters rushing into their houses, offices and stores. Not only does stormwater harm homes and business, it also:

- Kills people
- Pollutes our rivers, lakes and streams
- Injures our wildlife habitat
- Threatens our water quality

Rain water washes loads of natural and man-made materials into the storm drains – oil, grease, tire residue and litter from highways; fertilizer and weed killers from yards; animal wastes, livestock bacteria, cigarette butts and all sorts of microorganisms you would not want to wade in or drink. All this gunk is called non point source pollution (NPS). As the water rushes through the storm drains this NPS flows into the creeks, stream, rivers, lakes and groundwater. *Provided by the UG of Wyandotte County.*

KUMC Street Fair & Rosedale Parade: Sept. 27th

The Rosedale Development Association and KUMC are joining together to bring a fun filled day to the Rosedale Community. The parade, sponsored by the RDA will begin at 10 a.m. and will travel from 1016 Southwest Blvd. and then turn on Rainbow and go south to Rainbow Blvd. and 36th Avenue. The KUMC Street Fair hosted by KUMC staff and students will immediately follow the parade and will take place in the parking lot at 36th Avenue and Rainbow. The KUMC Street Fair will have delicious food to sell, great music to listen to plus rides and games for kids to enjoy. The fair will last until 1 p.m. All proceeds will towards a charity in Kansas City, Kansas.

KU Officer & Family Lose Loved One

On July 4th Alberta Bowles, mother-in-law of George Kemper, RDA Board member and KU Community Policing Officer, passed away. We offer our condolences to Officer Kemper and his family in this time of loss.

Farewell to RDA . . .

It is with sincerest gratitude that I wish to thank Wendy Wilson & the Rosedale Development Association staff and board for allowing me to be part of the organization for the past two years. I have thoroughly enjoyed my time in Rosedale, the chance to participate in neighborhood meetings, to work with local residents, and to meet local business owners. This is the last newsletter that I will be editing, as I will begin my Master of Social Work degree this fall at the University of Michigan. It has been a pleasure to write for you and to learn from you. As the focus of my MSW will be Community Organization with special emphases on Community and Social Systems and Management of Human Services, I have no doubt that the lessons I have learned in Rosedale will contribute positively to my life and academic ambitions for years to come. I wish all the best to the residents and businesses of Rosedale and share in the community's excitement regarding the continuing improvement of Rosedale, and especially RDA's new projects such as the construction and completion of the Rainbow Park and Mission Cliffs housing developments and much more! Thank you Rosedale!

All the best, Angela Oetama
Volunteer
Mennonite Voluntary Service

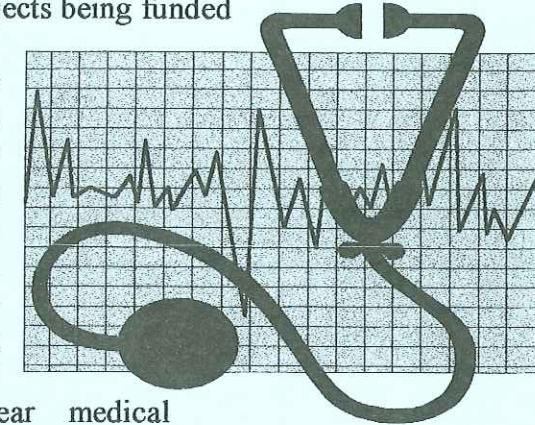
Farewell Event: You're Invited!

Friends and residents of Rosedale, you're invited to a Farewell for Angela in the lower level of Sharing Community in Rosedale, 1444 S.W. Blvd. on Friday, August 8 at 4:30 p.m. Questions regarding this event may be directed to Wendy at RDA @ 677-5097.

KU Offers Free Health Clinic

Thanks to the efforts of some University of Kansas School of Medicine students, uninsured and under-insured residents in the area will have access to some basic medical care through the JayDoc Free Clinic. The clinic is being made possible through a "Caring for Community" grant from the Association of American Medical Colleges (AAMC) and the Pfizer Medical Humanities Initiative. The program at KU is one of just eight such projects being funded nationwide

through the program. The JayDoc Free Clinic will be open on Wednesday evenings, beginning August 13. Second and third year medical students will operate the facility under the oversight of volunteer physicians. Additionally, eight undergraduate volunteers from KU will work in the clinic. The clinic will be located at the existing Southwest Boulevard Family Health Clinic, which is located on the corner of Southwest Blvd. and Rainbow in Kansas City, KS. Students from KU have worked since last October to secure funding for the program. All of the grant applications, logistics and staffing plans had to be performed by students to qualify for the AAMC program. Questions may be directed to Dennis Minich 913-588-5246. *Info. provided courtesy of KUMED.*



Rosedale Neighborhood Leader Frankie Grady Passes

On July 7th Frankie lost her battle with cancer. She was an area resident most of her life. She served as a neighborhood leader in the McFarland Heights neighborhood near KU with the boundaries of Bristow on the north, Esterly on the south, Chester on the west and State Line on the east. Frankie was Communications and Development Coordinator of Kansas City S.I.D.S. Resources and active in numerous cancer education and support groups. Frankie was a vivacious, compassionate, and dynamic person who will be dearly missed. Our condolences go out to her friends and family.

Rosedale Rainbow Parade

Saturday, September 27, 2003

Entry Form



Theme: Celebrating Our Diverse Rosedale Heritage

The Rosedale Rainbow Parade will be on Saturday, September 27, 2003. The parade will begin at 10 a.m. at 1016 Southwest Boulevard and continue eastward up Southwest Boulevard and then south up Rainbow Boulevard to Rainbow Boulevard and West 36th Avenue at the lower parking lot of KU Medical Center. There is no entry fee. Entry deadline—September 19, 2003.

Name of Organization (or Entrant) _____ Phone# & Fax# (if any) _____

Name of Contact Person _____

Address _____ City _____ State _____ Zip _____

Type of Entry: Float () Car () Band () Saddle Club ()

Other _____

Is there something we can announce about your entry as it goes by the judge's stand?

Release and Waiver

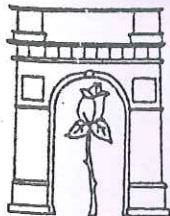
I hereby for myself, my heirs, executors and administrators and anyone else who might claim on my behalf, waive release, discharge and covenant, not to sue the Rosedale Development Association, any and all sponsors, their agents assigns, claims or liability for death, personal injury, or property damages of any kind or nature whatsoever arising out of, or in the course of this event. Minor applicants will be accepted only with the signature of a parent or legal guardian. I hereby state that on September 27, 2003 insurance on my vehicle will be in full effect, according to statutes of the state of Kansas.

Signature _____ Date _____

For more information, or if you have any questions, call Amy at RDA (913) 677-5097/FAX (913) 677-3437

Please return form by September 19, 2003 to:

**Rosedale Development Association
1403 Southwest Boulevard
Kansas City, KS 66103**



Rosedale Development Association

Working in partnership with residents, businesses, and institutions to build a strong community and improve the quality of life for those who live, work, and play in Rosedale.

August 2003

Business Feature McDonald's

McDonald's Restaurant at 43rd and Rainbow is owned by John DeVera who purchased the store in 1996. DeVera, who began working for McDonald's when he was 15 years old, purchased his first store in 1989.

Antoine Dunn became the store manager in 1999. He is a block captain for McFarland Heights neighborhood group. DeVera and Dunn make McDonald's an active member of the Rosedale Community.



Antoine Dunn and John DeVera.

They were the first business to support the Excellence in Education program, by providing food for the awards program. They also provided food for the Belrose and Nazarene Church summer youth clean up. McTeacher nights, when McDonald's will donate a portion of sales to a local school, are scheduled for Oct. 7 and Dec. 2 from 4:00-8:00. Be sure to watch for Ronald McDonald in the Rosedale Rainbow Parade on Sept. 27.

Summer Youth Employment

Thank you to area business members Applemarket, Bank Midwest, KU Med, Law Office, Miller Image, Nance's Deli, Rosedale Middle School, Rosedale Vision, Strasser Hardware, Top Master and Vital Signs. We thank you for participation in this year's Summer Youth Employment program. RDA had fourteen youth participants in the program and we're sure that each one of them benefited greatly and learned many new skills. It was a pleasure to have you as a partner in this year's program and we hope to work with you again next year.

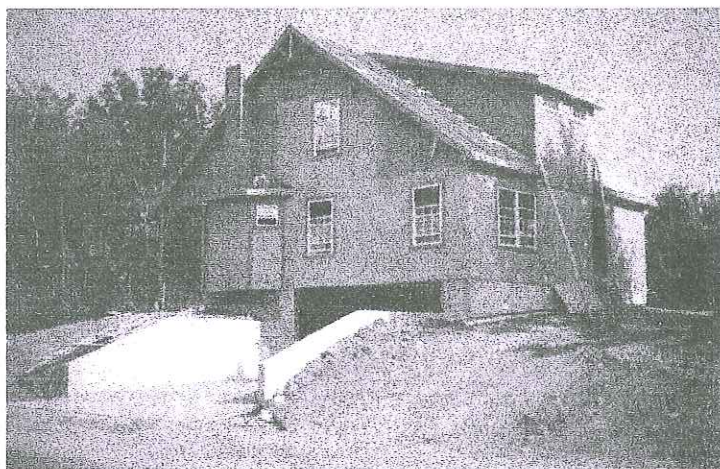
Volunteers

RDA just finished our first year of CD 2000. Much to our surprise this year we had over 193 youth and 189 adults volunteers. RDA and the Rosedale community send thanks to each of you who took your time to help make our community a better place. We

have many opportunities for anyone wishing to volunteer, call (913) 677-5097 and ask for Amy Stock.

New Housing Update

Rainbow Park Gateway is in full swing. The first home at 39th & Lloyd with its nice front porch is a wonderful site. Then we have our second house on Minnie, which is well under construction. So if you're out for a drive go by and check out the new development.



New home at 39th & Lloyd constructed by City Vision Ministries in partner with Rosedale Development Association

Rosedale Rainbow Parade and KUMC Street Fair

RDA and KUMC have teamed up this fall to bring you the Parade and Street Fair. Please mark your calendars for Saturday, September 27th. The parade will begin at 10 a.m. from 1016 SW Blvd. and will travel up Rainbow Blvd. with a final destination of the Street Fair in the parking lot at the corner of 36th & Rainbow. The KUMC Street Fair will last until 1 p.m. The charity that was chosen for this event is Friendship Inn. This organization houses families of patients who have been admitted to the medical center. This event will include entertainment, games, prizes, carnival rides, food vendors and FUN! There is still time to enter the parade, call Amy Stock, RDA Volunteer Coordinator at (913) 677-5097 for more info.

BOARD OF DIRECTORS

<u>President</u> Stevie Reynolds	Rob Percy	Rick Silva	Gerard Lozada
<u>Vice Presidents</u> Vicky Jansen Forrest Rhea	Paul Davidson	Lili Englebrick	Phil Gardos
<u>Treasurer</u> Pat Brown	George Kemper	Ann Weick	Michelle Robinson
<u>Secretary</u> Susie Overman	Brian Williams	Dana Coriell	Kim Cuda



Rosedale Development Association

Working in partnership with residents, businesses, and institutions to build a strong community and improve the quality of life for those who live, work, and play in Rosedale.

August 2003

**Business Feature
McDonald's**

McDonald's Restaurant at 43rd and Rainbow is owned by John DeVera who purchased the store in 1996. DeVera, who began working for McDonald's when he was 15 years old, purchased his first store in 1989. Antoine Dunn became the store manager in 1999. He is a block captain for McFarland Heights neighborhood group. DeVera and Dunn make McDonald's an active member of the Rosedale Community. They were the first business to support the Excellence in Education program, by providing food for the awards program. They also provided food for the Belrose and Nazarene Church summer youth clean up. McTeacher nights, when McDonald's will donate a portion of sales to a local school, are scheduled for Oct. 7 and Dec. 2 from 4:00-8:00. Be sure to watch for Ronald McDonald in the Rosedale Rainbow Parade on Sept. 27.

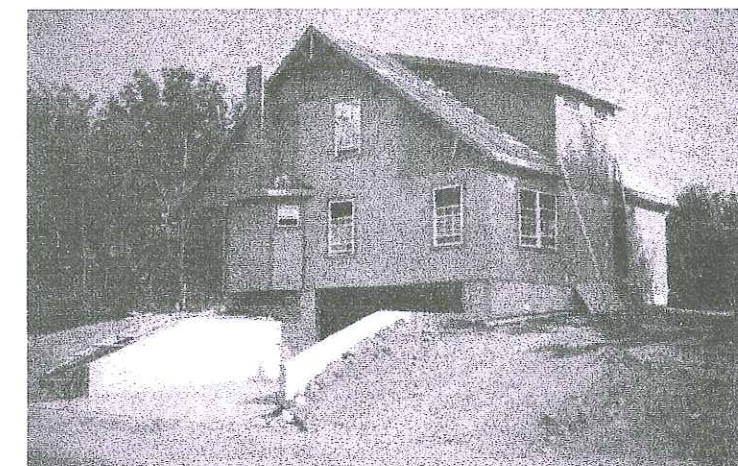


Antoine Dunn and John DeVera.

have many opportunities for anyone wishing to volunteer, call (913) 677-5097 and ask for Amy Stock.

New Housing Update

Rainbow Park Gateway is in full swing. The first home at 39th & Lloyd with its nice front porch is a wonderful site. Then we have our second house on Minnie, which is well under construction. So if you're out for a drive go by and check out the new development.



New home at 39th & Lloyd constructed by City Vision Ministries in partner with Rosedale Development Association

Summer Youth Employment

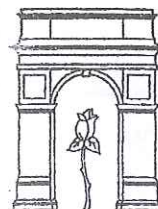
Thank you to area business members Applemarket, Bank Midwest, KU Med, Law Office, Miller Image, Nance's Deli, Rosedale Middle School, Rosedale Vision, Strasser Hardware, Top Master and Vital Signs. We thank you for participation in this year's Summer Youth Employment program. RDA had fourteen youth participants in the program and we're sure that each one of them benefited greatly and learned many new skills. It was a pleasure to have you as a partner in this year's program and we hope to work with you again next year.

Volunteers

RDA just finished our first year of CD 2000. Much to our surprise this year we had over 193 youth and 189 adults volunteers. RDA and the Rosedale community send thanks to each of you who took your time to help make our community a better place. We

Rosedale Rainbow Parade and KUMC Street Fair

RDA and KUMC have teamed up this fall to bring you the Parade and Street Fair. Please mark your calendars for Saturday, September 27th. The parade will begin at 10 a.m. from 1016 SW Blvd. and will travel up Rainbow Blvd. with a final destination of the Street Fair in the parking lot at the corner of 36th & Rainbow. The KUMC Street Fair will last until 1 p.m. The charity that was chosen for this event is Friendship Inn. This organization houses families of patients who have been admitted to the medical center. This event will include entertainment, games, prizes, carnival rides, food vendors and FUN! There is still time to enter the parade, call Amy Stock, RDA Volunteer Coordinator at (913) 677-5097 for more info.



Rosedale Development Association

1403 Southwest Blvd. Kansas City, KS. 66103
(913) 677-5097

Wendy Wilson-Executive Director

233-9172

Non-Profit Org.
U.S. Postage
PAID
Permit No. 233
Kansas City, KS.

RETURN SERVICE REQUESTED

Chue Peng Her
2025 South Mill Street #7
Kansas City, KS 6

NIXIE 2022 3 06 09/10/03

POSTAGE DUE = \$0.37
RETURN TO SENDER
ATTEMPTED-NOT KNOWN
UNABLE TO FORWARD

66103/9998



MEMBERSHIP

Annual Business Dues—\$100

Name of Business OR Name of Household

Address City State Zip Code

Contact Person

Day Phone Evening Phone Fax

Please mail application along with check made payable to:
**Rosedale Development Association
1403 S. W. Blvd.
Kansas City, Kansas 66103**

The Rosedale Arch

In late November the Rosedale Arch was vandalized, lights were broken and graffiti was painted in and around the Arch. RDA has just completed installation of over \$16,000 worth of new lighting that was damaged. In response to this crime RDA offered a \$250 reward for information resulting in an arrest. We distributed informational flyers and connected with the KCMO Police officers who work the Westside area of KCMO. As a result of this, a tip was called into RDA that led to the arrest of an individual from the Westside area. He admitted to the police that he was responsible for over \$2,000 worth of damages. RDA has paid the reward to the tipster.

Vacant Houses

It was brought to our attention that the area North of KU Med Center has many vacant houses. RDA contacted the owner of these homes and requested a list of these addresses. RDA acquired a list and turned it over to the Community Policing Officers of KCK and KU Med Center. They have checked this area to insure that they are secure and no vagrants or homeless have moved into them. Checks of these properties will continue. If anyone is seen going into any of these houses the police need to be called.

Get Well Wishes

RDA wishes Brincie Johns a speedy recovery. Brincie fell at his house the other night and had to have stitches on his forehead. If you're in his neighborhood you may want to stop by and visit with him. We hope to see him out and about soon.

Calls of Concern

We have received many calls regarding the progress of Wilma Trial. Wilma is feeling much better and on the road to recovery after surgery and a long stay in the hospital. Wilma has been driving short distances and is starting to be feisty again. It's great to see her getting active in her neighborhood again.

Amy Mattson

Amy Mattson joined the RDA team this month as a volunteer through Mennonite Voluntary Services. She is from Salina, KS. Amy recently graduated from Bethel College with a degree in English and a minor in Mass Media. She enjoys the performing arts, reading, and sailing (an odd love for the middle of Kansas). Amy will be involved with outreach at RDA, writing the

newsletter and assisting with developing a new RDA brochure. Amy hopes to be valuable to RDA and to the Rosedale community.

Westwood Apple Market

On August 15, there was a shooting at the Apple Market on 47th Street and Mission Road, one person was injured and one person was fatally wounded. For the customer that was injured we wish a speedy recovery. RDA would like to send our condolences to Ray Ninemire's family and friends. He'll be greatly missed by all that shop at the store. This location is heavily traveled by Wyandotte & Johnson County police and was just a strange happening of events. Apple Market has increased security at the store and will now be open from 7 a.m. to 10 p.m. Apple Market has contributed so much to the Rosedale community; we want to encourage patrons to continue to shop there. Any information regarding this crime should be called into Johnson County Sheriff's Office at (913) 791-5560, Westwood Police Department at (913) 362-3737 or Tips Hotline at (816) 474-8477. The shooter is described as a light complexioned male (possibly Caucasian): approximately 5'5" tall, small to medium build. RDA has a composite. If you are interested, stop by the office to look at it.

Rosedale Shooting

On August 16th a shooting occurred at 1715 Marty. A 15 year-old male was shot in the back three times, he's currently hospitalized and his condition is unknown. He and his brother were visiting a relative across the street. The shooting occurred at 1715 Marty, a house that has had problems in the past. The property was occupied by a group of young adults in their late teens to early twenties. Information provided to RDA was that the shooter was a frequent visitor to the house, but no arrest has been made in the case. Police did find drugs in the house. The former residents fled immediately and have not been located. Information regarding this crime can be called into the police or to the RDA office.

~Words of Wisdom~

Life is not about how fast you run, or how high you climb, but how well you bounce.

Anonymous

The Four "R's" of Graffiti Suppression/Prevention

"The single most important thing to a street gang is the act of representing themselves within an area. Graffiti is the most effective tool gangs use to accomplish this." (taken from the Multijurisdictional Counterdrug Task Force Training manual – Criminal Street Gangs I)

"The presence of graffiti in the community strikes fear of the unknown into the citizen. When not removed it gives a feeling of helplessness in their neighborhood is overrun with gangs and is no longer a safe place to live. This is the mind-set the gang wishes to impose so that they can appear strong and in control." (from the training manual)

One of the best ways for individuals and groups to assist in the graffiti reduction effort is to follow the **Four R's: Read, Record, Report and Remove.**

Reading graffiti is an important factor in helping to identify the graffiti artist or "tagger." Gang graffiti is the way gang members communicate with each other, mark their territory and send messages to rival gangs. Interested citizens and community groups should contact their community officer for opportunities to learn more about how to read graffiti.

Recording the graffiti, ideally with a digital photograph, will be helpful to law enforcement's efforts to track down and make "taggers" accountable. Keeping a log of digital photographs, along with date, time and location of the picture, will go a long way in stretching the resources of our police department, sheriff's officers and others engaged in countering the effect of graffiti on our community.

Report the graffiti. This key step is obviously critical. Law enforcement must have a record of the offense. Citizens involved in the graffiti suppression effort are asked to call our local Service Request desk at (913) 573-8790 and turn in the date and location of graffiti. This will begin the information chain at the government level. Do this only after you have recorded the offense.

Finally, remove the graffiti. If not removed quickly, graffiti accomplishes its goal of communication, defacing and indicating gang control over an area. Resources are available to help with removal products; Operation Brightside has a supply of recycled latex paint, and Liveable Neighborhoods has a limited supply

of a product called "Tagster" which can be used on non-brick surfaces to effectively remove spray paint. Sutherland cares a "graffiti remover", you will need a power washer to follow-up.

Pass on any information about graffiti to our **Community Policing Officers :**
Patrolman J.J. Wilt at (816) 497-0349 and
Patrolman Jeffery Miscek at (816) 497-0453

KCK Police Officers

KCK police officers have new email addresses effective immediately. Each officer's address will be first initial and last name followed by @kckpd.org

Adopt-A-Barrel

RDA has 13 trash barrels that need a good location. These barrels have been hand decorated by youth from our area. By adopting one you encourage passer bys to drop trash in and not litter. If your business or neighborhood group is interested in taking the responsibility for one call Linda or Amy at 677-5097.

Heat Warning

Everyone has noticed the extreme heat this summer. High temperatures are not just uncomfortable, but they are also very dangerous. Such heat can lead to heat stroke and death. With the thermometer reaching the hundreds everyday, stay out of the sun, especially during the hottest parts of the day, and drink plenty of water. Also be conscious of others in your neighborhood. If you have an elderly neighbor, check up on them, as the heat can especially affect the elderly.

Diabetes Support Group

The Providence Health Diabetes Center now provides a diabetes support group. The purpose of the group is to create a supportive environment for those with diabetes. One class offered teaches armchair exercises. These are simple exercises you can do from the comfort of your favorite easy chair. The class is on Sept. 8 and is free of charge. For more info call (913) 596-3940 or (800) 966-8929 ext. 3940

Road Renovation to begin "Summer 2004"

Road renovation scheduled to start at I-35 and 7th Street. When the work starts this area will be down to one lane of traffic. To keep up with the progress of the construction you can go to KDOT web site:
<http://kdot1.ksdot.org/public/kdot/divoperat/district1.html>

Rosedale Rainbow Parade

Saturday, September 27, 2003
Entry Form



Theme: Celebrating Our Diverse Rosedale Heritage

The Rosedale Rainbow Parade will be on Saturday, September 27, 2003. The parade will begin at 10 a.m. at 1016 Southwest Boulevard and continue eastward up Southwest Boulevard and then south up Rainbow Boulevard to Rainbow Boulevard and West 36th Avenue at the lower parking lot of KU Medical Center. There is no entry fee. [REDACTED]

Name of Organization (or Entrant) _____

Phone# & Fax# (if any) _____

Name of Contact Person _____

Address _____

City State _____

Zip _____

Type of Entry: Float ()

Car ()

Band ()

Saddle Club ()

Other _____

Is there something we can announce about your entry as it goes by the judge's stand?

Release and Waiver

I hereby for myself, my heirs, executors and administrators and anyone else who might claim on my behalf, waive release, discharge and covenant, not to sue the Rosedale Development Association, any and all sponsors, their agents assigns, claims or liability for death, personal injury, or property damages of any kind or nature whatsoever arising out of, or in the course of this event. Minor applicants will be accepted only with the signature of a parent or legal guardian. I hereby state that on September 27, 2003 insurance on my vehicle will be in full effect, according to statutes of the state of Kansas.

Signature _____

Date _____

For more information, or if you have any questions, call Amy at RDA (913) 677-5097/FAX (913) 677-3437

[REDACTED]

Rosedale Development Association
1403 Southwest Boulevard
Kansas City, KS 66103

