

Rosedale Business of the Month

Marc's Gift & Garden Center

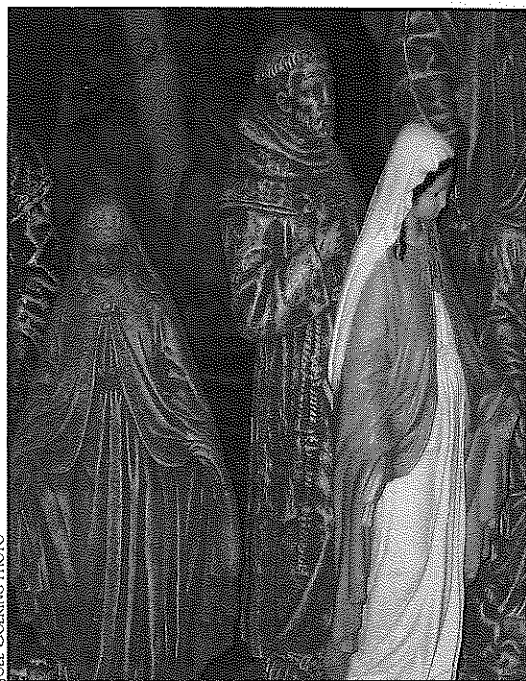
1281 Merriam Lane
Phone: (913) 722-6433

Hours of operation (summer hours): Mon.-Tues., Thurs.-Fri. 9 a.m.-5:30 p.m.,
Sat. 9 a.m.-4 p.m., Sun. 10 a.m.-4 p.m. Wed. closed.

Looking for the perfect lawn decoration? Hoping to spruce up your garden? Wanting to improve the attractiveness of your home? If you answered "yes" to any of these questions, then you need to visit Marc's Gift and Garden Center.

Located on the southeast corner of 14th St. and Merriam Lane, Marc's has a wide variety and unique selection of home décor products and outdoor yard items. The store offers: cast aluminum lighting, furniture, fountains, and urns; statuary and fountains; pottery; home accents; gazing balls; wrought iron yard art; greenhouses full of flowers; sundials and sun-faces; and holiday fruit baskets.

As indicated by the store's name, Marc's is owned by Marc Van Meerhaeghe. Marc is known as a friendly and helpful businessman. He has operated the Gift and Garden Center in its present location since April 1981,



JOEL COERING PHOTO

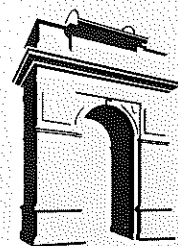
The Gift and Garden Center features a variety of items for your home, yard, lawn, and garden, including these statues of the Virgin Mary and other religious figures. The Center has a very diverse and eclectic selection of products. Marc Van Meerhaeghe, the storeowner, is glad to help customers find what they need.

making it a long-time Rosedale business.

In addition to its mainstay products, the Gift and Garden Center also offers items from different countries around the world. Marc said that he tries to change inventory every few years in order to accommodate the evolving tastes and preferences of his customers. The store also rotates items on a seasonal basis.

According to Marc, the Gift and Garden Center has a loyal customer base, bringing people to Rosedale from all over the Kansas City metropolitan area, including from as far away as Blue Springs and Liberty, Mo. The store has contributed to community philanthropic enterprises, as well. The store has sold produce to the Franklin Center and other local businesses at wholesale prices, and has helped with fundraisers for area churches.

Remember to visit Marc's Gift and Garden Center for all of your home and garden decorating needs. ☞



The Rosedalian

ROSEDALE DEVELOPMENT ASSOCIATION NEWSLETTER

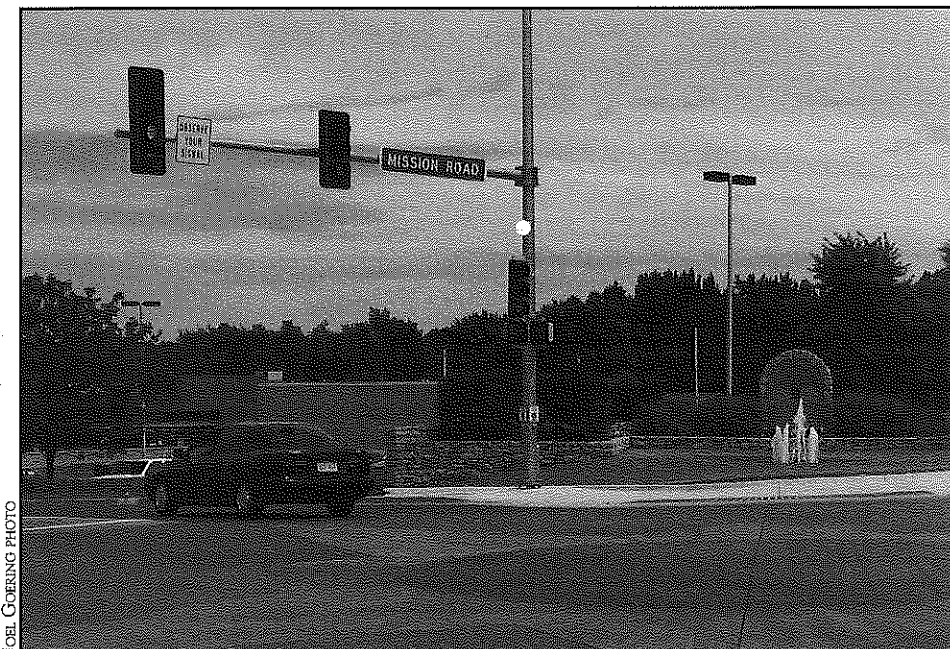
Public improvements along 47th St. making progress

If one drives on 47th St. these days, it is evident that times are a-changin'.

Boosted by a partnership between the cities of Kansas City, Kan., Westwood, and Roeland Park, several infrastructure improvements have been made on the 47th St. corridor from Mission Rd. to Rainbow Blvd. The improvements include: repaving of 47th St., enhanced sidewalks on the Johnson County side of the road, and brand-new intersections at 47th and Mission and 47th and Rainbow.

The improvements are the result of an extensive collaborative process between the three aforementioned cities. The 47th and Mission Road Area Concept Plan, adopted by the three city governments in Sept. 2000, provides a framework for developing the area. Since the 47th St. corridor is at the nexus of three cities and two counties, a special zoning overlay district was created. A committee, consisting of appointed representatives from each of the three cities, was formed to oversee the process. RDA's Executive Director, Wendy Wilson, served on the committee.

The improvements were paid for by public money from each of the three cities involved, with the goal of spurring new growth and investment in the



JOEL COERING PHOTO

The intersection of 47th St. and Mission Rd. was recently repaved and given a new look, including brick crosswalks and a compass point in the middle of the intersection. The changes at the intersection and along the 47th St. corridor are part of the 47th and Mission Rd. Area Concept Plan, which is a joint effort between the cities of Kansas City, Kan., Westwood, and Roeland Park, designed to stimulate investment in the area.

surrounding area. Many municipalities, especially in urban areas, utilize public dollars and resources to stimulate economic development. This is the ultimate aim of the 47th St. infrastructure improvements.

There are further improvements planned for the area, including enhanced streetscape features like lighting, furniture, and trees, as well as vertical stone gateway markers. Look for those in the future as the 47th St. corridor continues to blossom. ☞

Rosedale Master Plan approved by Planning and Zoning Commission

The Unified Government Planning and Zoning Commission gave a unanimous recommendation for approval of the Rosedale Master Plan at a special meeting on Monday, July 11. The plan next moves to the full U.G. Commission on Aug. 25 for final approval.

The proposed Master Plan is the product of a thorough process of

community dialogue and partnership. Neighborhood leaders, business owners, representatives from local agencies, schools, churches, and the University of Kansas Medical Center, and other community stakeholders participated in the formation and development of the Plan.

If approved by the Commissioners, the Plan will serve as a roadmap for

future development in Rosedale. It does not change current zoning or existing structures. Rather, it is a concrete guide to ensure that future development coincides with community wants and needs.

To view the proposed land-use map under the Plan or for more information, visit www.rosedaleassociation.org/landuseplan.htm. ☞



1403 Southwest Blvd.
Kansas City, Kansas 66103

Non-Profit Org.
U.S. Postage
PAID
Permit No. 233
Kansas City, KS

From the Chair of the Board of Directors

One of the first things our new neighbors did was cut down the tree between our front porches. It was a tall, sturdy walnut tree that had happily grown on its own for years.

Unleashed, the sun shocked the whole row of plants that lined the side yard and woke up the flowers in the hanging baskets. After the shade loving plants relocated to the back yard and the hanging baskets had doubled in size, the walnut tree was hardly missed.

However, the squirrels having been robbed of a sizeable portion of their aerial super highway, continue to fiercely lobby the city for public improvements.

That's not the only change in my Rosedale neighborhood. When property assessment notices were delivered this year, house values had skyrocketed – 50 to 66 percent higher in some cases. The

news was double-edged. Who knew whether buyers would pay more for our houses? And how much impact would the new assessments have on property taxes – already notoriously high?

Five houses in the neighborhood sold in recent months. None were on the market long and all of the sellers got their asking prices – one even got more than listed when two buyers bid against each other.

As for property tax relief, we're joining the squirrel lobby to make sure that UG officials know that we're paying attention. One of the promises of the housing and business development throughout Wyandotte County is reduced property taxes – a change we will all welcome. ☞

— Stevie Reynolds

Church members learn about RDA and Rosedale community

On Sunday, July 10, over 60 members of Rainbow Mennonite Church (1444 Southwest Blvd.) attended "Getting to Know Rosedale," an RDA-organized event that was designed to educate participants about the developments, issues, and forces shaping the Rosedale community. It was also an opportunity for church members to explore ways to get involved in the community and to hear about RDA's activities and mission.

For many who attended, the highlight of the event was a bus tour of Rosedale, led by RDA's Executive Director, Wendy Wilson. There were two consecutive tours, and each time, the bus was filled to capacity. The University of Kansas Medical Center provided the 22-passenger shuttle bus. The tour demonstrated the diversity and vitality of Rosedale, covering the new Rainbow Park/Mission Cliffs development, the historic Hanover Heights neighborhood, Sauer Castle and the recently-completed Studio 804 house on Shawnee Road, and publicly-funded housing complexes

ROSEDALE DEVELOPMENT ASSOCIATION

Working in partnership with residents, businesses, and institutions to build a strong and healthy community and to improve the quality of life for those who live, work, and play in Rosedale.

1403 Southwest Blvd.
Kansas City, KS 66103
Phone: (913) 677-5097
Fax: (913) 677-3437
www.rosedaleassociation.org
Monday-Friday, 9 a.m.-5 p.m.

Wendy Wilson, Executive Director
Linda Wright, Office Manager
Kelly Jander, Volunteer Coordinator
Joel Goering, MVS Volunteer
Board of Directors,
www.rosedaleassociation.org/who_board.htm

Newsletter design by Elizabeth Johnston,
Lizzardbrand Inc. (913) 236-0487
www.lizzardbrand.com

Belrose Manor and Rosedale Ridge.

Participants were also able to see the Koch Center, the community room next door to RDA's office (1401 Southwest Blvd.), as well as the new "Rosedale Paradise" courtyard area behind the Koch Center, which was completed earlier this year during Join Hands Day. RDA staff members were available to discuss RDA programs and to answer questions, and a complimentary lunch was provided, as well. Participants were also encouraged to consider joining RDA as paid members and to get involved in community activities and programs.

RDA wishes to thank members of Rainbow Mennonite Church for attending "Getting to Know Rosedale." RDA hopes to replicate the event for other interested churches, businesses, stakeholders, and civic organizations. If you or your organization would like to participate in a future "Getting to Know Rosedale" event, contact our office: (913) 677-5097. ☞

Thanks for your support

Rosedale Development Association expresses deep gratitude to the many local businesses that have renewed their RDA membership this year. RDA depends on the support – financial and otherwise – of residents and businesses to sustain its work of building a strong healthy community and improving the quality of life in Rosedale. Every contribution makes a difference and we thank you for your investment.

As an added perk for our business members, RDA is now offering a free listing and link for each member on our website. To see a list of our current business members, visit www.rosedaleassociation.org/business.htm.

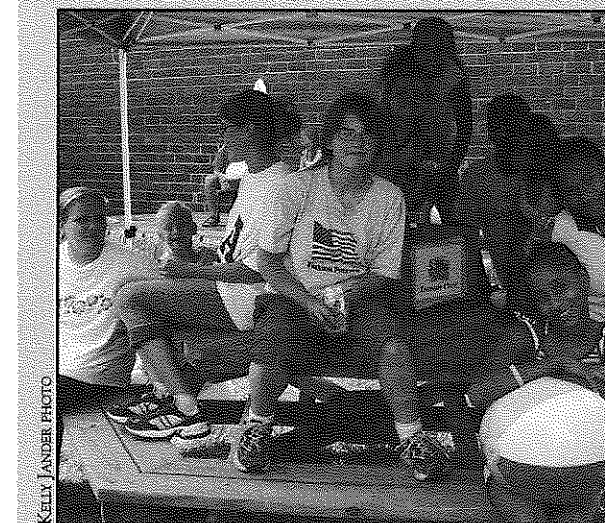
Once again, thank you for renewing your business membership for 2005. Our goal is to make Rosedale the Place to Be for commerce and residence, a place where people choose to live and do business because it is a safe, vibrant community. We look forward to continued partnerships with Rosedale's businesses. ☞

KCNA to offer next series of "Building 21st Century Leaders"

The Kansas City Neighborhood Alliance (KCNA), one of RDA's organizational partners, is set to begin the next 10-session series of "Building 21st Century Leaders," a critically-acclaimed leadership development program for students, members of neighborhood groups, community activists, and others. If you would like more information or if you want to sign up for the next series, call: (816) 753-8600, ext. 1070, or e-mail 21stcenturyleaders@kcna.org.

Good Music Festival postponed

The Good Music Festival, an event that was advertised in the June/July newsletter, has been postponed until at least spring 2006. Unfortunately, the event did not have enough sponsorship revenue to proceed with the original July 28 date. The festival was to be held at the Boulevard Drive-In (1051 Merriam Lane) and was to feature five different musical groups. We regret any inconvenience the postponement may have caused.



Cheeseburgers in Paradise

41 people, including the children and young people shown at left, attended RDA's volunteer appreciation event, "Cheeseburgers in Paradise," held on Saturday, July 16. The fun-filled occasion was a way to thank our many dedicated volunteers, especially those that helped transform the formerly vacant lot behind RDA's office into "Rosedale Paradise" on Join Hands Day earlier this year.

Healthy Kids Camp returns

Rosedale Congregational Church, 4326 Lloyd, is sponsoring Healthy Kids Camp again this summer. It will be held Aug. 8-12 from 9 a.m. to 5 p.m., and is for children going into the first-fifth grade.

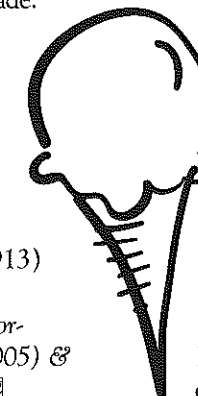
The day camp, aimed at promoting healthy lifestyles in young people, includes crafts, drama, singing, cooking classes, games, exercise, and lots of fun. Enrollment is limited, so if you are interested, please contact the church as soon as possible: (913) 236-6337.

Source: Frank Rushton Neighborhood Association newsletter (July 2005) & Rosedale Congregational Church. ☞

Holy Name to host annual Ice Cream Social

The Holy Name Faith Community, a 129-year-old Catholic parish in Rosedale, is hosting its annual Ice Cream Social on Saturday, Aug. 6, from 5-10 p.m., and on Sunday, Aug. 7,

from 5-9 p.m. Entitled "Rosedale's Little Taste of Heaven," the ice cream social is open to everyone. There will be food, games for kids and adults, bingo, a dunk tank, face painting, a misting tent, and many other activities. Holy Name is located at 1001 Southwest Blvd., across from Strasser Hardware. For more information, call: (913) 236-9219. ☞



Membership application

Annual business dues: \$100 ☞ Annual household dues: \$15

Name of business or name of household _____

Address _____ City _____ State _____ ZIP code _____

Contact person _____

Day phone _____ Evening phone _____ Fax _____

E-mail address _____

Please mail application, along with check made payable to:
Rosedale Development Association
1403 Southwest Blvd.
Kansas City, KS 66103



Upcoming Events

August 6-7
"Rosedale's Little Taste of Heaven" (Holy Name Ice Cream Social). 1001 Southwest Blvd. 5-10 p.m. (Aug. 6), 5-9 p.m. (Aug. 7).

August 8-12
Healthy Kids Camp (day camp for local children that emphasizes healthy living). Rosedale Congregational Church, 4326 Lloyd. For more information or to sign up, call (913) 236-6337.

August 10
Game Night. Youth and adults gather for playing games, hanging out and having fun. 1401 Southwest Blvd. 6:00-8:00 p.m.

August 11
End of Summer Party for Summer Youth Employment Program. Youth, parents, supervisors and trainers are invited. 1401 Southwest Blvd. 6:00-7:30 p.m.

August 15
First day of school for students in U.S.D. 500 (Kansas City, Kan.)

August 16
RDA Board meeting. 1401 Southwest Blvd. 5:30-6:30 p.m.

August 24
First session of the 2005-06 Rosedale Youth Academy.

August 25
Rosedale Master Plan examined by U.G. Commission. City Hall, 701 N. 7th St.

Rosedale Business of the Month

Jim Millam Ditching, LLC

Address: 1411 Southwest Blvd.

Phone: (913) 927-2568

Hours of Operation: Mon.-Fri., 7 a.m. – 5 p.m.

“Life is a ditch, and I want to dig yours,” declares the voice on the Jim Millam Ditching answering machine.

Millam Ditching, which has been in existence since 1964, specializes in trench excavation, horizontal boring, and rock breaking and sawing. Most of the company’s work comes from the commercial and industrial sectors; rarely does the company accept residential work. 80-85% of the company’s business is in new construction.

Some of the company’s recent projects include digging the underground electricity tunnels for the Great Wolf Lodge in western Wyandotte County and the new H&R Block World Headquarters in downtown Kansas City, Mo. Millam also has ongoing work at the General Motors and Certain Teed Fiberglass plants in the Fairfax district of Kansas City, Kan.



Dan Millam, owner of Millam Ditching, sits inside one of the company utility trucks during Join Hands Day (May 7). The company has a fleet of four utility trucks and four transport trucks. Because of its central location, Millam can quickly reach many destinations around the Kansas City metro area.

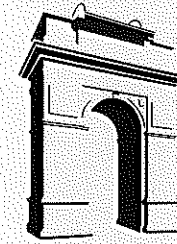
The company, with seven full-time employees, is currently owned by Dan Millam, son of the company’s founder, Jim Millam. The company moved its office to Rosedale in 1995. Prior to that, it had been located in Clinton and Odessa, Mo.

Millam Ditching is practically a next-door neighbor of Rosedale Development Association. The company’s office is just a few doors down from RDA’s office.

Earlier this year, Millam donated half a day of labor and the use of the company’s equipment for RDA’s Join Hands Day project, which transformed the formerly vacant lot behind the RDA office into a beautiful recreation area. He personally smoothed out the surface of the lot and dug holes for the fence posts, operating heavy machinery to do so.

RDA graciously thanks Millam Ditching for this important contribution to the Join Hands Day project. ☺

Non-Profit Org.
U.S. Postage
PAID
Permit No. 233
Kansas City, KS



The Rosedalian

ROSEDALE DEVELOPMENT ASSOCIATION NEWSLETTER

Moving forward with new housing in Rosedale

Dignitaries from a variety of community, governmental, and private institutions attended the Mission Cliffs housing development groundbreaking ceremony on Aug. 24. The Mission Cliffs development, along with the nearby Rainbow Park development, will bring 120 new single-family homes and townhomes to the bluffs west of the University of Kansas Medical Center and the 39th St. district (near the intersection of Lake Ave. and Minnie St. in Kansas City, Kan.).

Eleven homes have already been completed in the area as part of the Rainbow Park development. The Mission Cliffs development is the next phase of the project. Both housing developments, which aim to provide middle and lower-income residents an opportunity for homeownership in the urban core, represent the fruition of many years of hard work by many people and organizations, including: RDA; City Vision Ministries; the Unified Government of Kansas City, Kan./Wyandotte County; Brotherhood Bank; Fannie Mae; and the U.S. Department of Housing and Urban



Shown during the groundbreaking ceremony are (from left to right) John Harvey, Executive Director of City Vision Ministries; Wendy Wilson, Executive Director of RDA; U.S. Sen. Pat Roberts; Mayor Joe Reardon; and Commissioner John Mendez.

Development (HUD).

For more information, visit www.cityvisionministries.org/mission.html or contact City Vision Ministries: (913) 371-5200. ☺

U.G. Commissioners approve Rosedale Master Plan

The Unified Government Board of Commissioners unanimously approved the Rosedale Master Plan during its meeting on Aug. 25.

The Plan is the product of a thorough process of community dialogue and partnership. Neighborhood leaders, business owners, representatives from local agencies, schools, churches, and the University of Kansas Medical Center, and other community stakeholders participated in the formation and development of the Plan.

Now that the Commissioners have approved the Plan, it will serve as a roadmap for future development in Rosedale. It does *not* change current zoning or existing structures. Rather, it is a concrete guide to ensure that *future* development coincides with community wants and needs.

To view the proposed land-use map under the Plan or for more information, visit www.rosedaleassociation.org/landuseplan.htm. ☺

Construction update

Thanks to recent heavy rains, many construction and infrastructure projects have been delayed around the city. Here is an update on several projects affecting Rosedale:

1. Repairs to I-35 from about 7th St. to Mission Rd./Southwest Blvd. will be complete in early October. The Mission Rd. viaduct over Turkey Creek is scheduled to be finished by Thanksgiving. However, drivers can expect to have access to southbound Mission Rd. from Southwest Blvd. by the third week in September.
2. The repaving of Southwest Blvd. (from the Mission Rd. overpass to Rainbow Ext. – this takes the work further east than originally planned) and of Mission Rd. (from 43rd Ave. to the Turkey Creek viaduct) will happen in early to mid-September.

Source: Unified Government City Engineer

Upcoming Events

- September 5**
Labor Day (RDA office closed).
- September 7, 14, 21, 28**
Rosedale Youth Academy. 1401 Southwest Blvd. 1-6 p.m.
- September 20**
RDA Board meeting. 1401 Southwest Blvd. 5:30-6:30 p.m.
- September 21**
Rosedale Leadership Council. 1401 Southwest Blvd. 5:30-6:30 p.m.
- September 25**
Dedication of renovated building for Rainbow Mennonite Church/Sharing Community in Rosedale. 1444 Southwest Blvd. 1:30 p.m.
- September 30**
Free concert at the Landon Center on Aging. Featuring *Andean Express*. 3599 Rainbow Blvd. 6-8 p.m.
- October 1**
Christmas in October (minor home repair program for Rosedale residents).
- October 9**
The Hindu and the Cowboy (play about diversity and cross-cultural relationships). University of Kansas Medical Center. Battenfield Auditorium (corner of Rainbow Blvd. and Olathe Blvd.). 3-5 p.m.



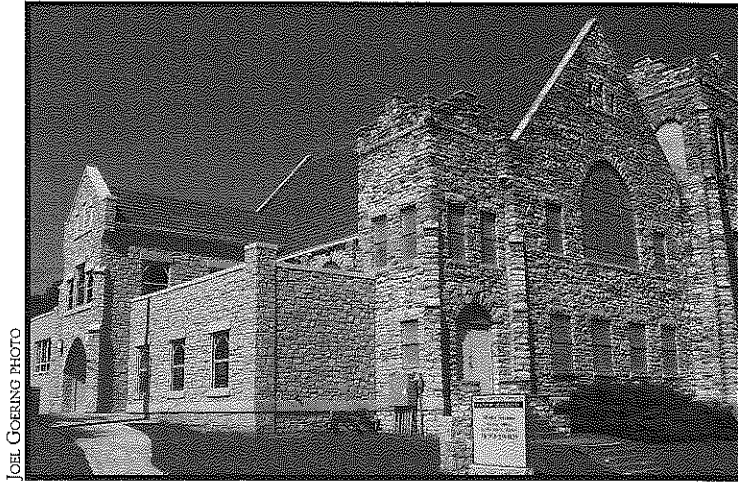
1403 Southwest Blvd.
Kansas City, Kansas 66103

Rainbow Mennonite Church to dedicate renovated building

Mark your calendar for a Rosedale celebration on Sunday, Sept. 25 at 1:30 p.m. The Rainbow Mennonite Church will be dedicating its recently renovated church at 1444 Southwest Boulevard, during a festive event open to the public. **NOTE: Mill St., which borders the church's west side, will be closed for about half-an-hour (1:50-2:20 p.m.) during the ceremony.**

The theme for the program is "Framing the Past, Celebrating the Future." Richard Friesen, former Outreach Director for the church, is the featured keynote speaker to talk of the church's past, while Wendy Wilson, Executive Director of the Rosedale Development Association, will address the role and impact the church will have on the future of Rosedale. Following the keynote speakers, a ribbon ceremony will be conducted at the new west entrance of the church. In case of inclement weather, the ceremony will move indoors to the 300-seat sanctuary.

Refreshments will be served downstairs in the Fellowship Hall after the dedication. Children will have an opportunity to have their picture taken wearing 1907-period clothing, the year when the original church was built. Guided tours will also be offered of the new addition and remodeled areas. Childcare will be available for children ages 3 and younger.



JOEL GOERING PHOTO

Rainbow Mennonite Church, located in one of Rosedale's oldest buildings (the cornerstone was laid 98 years ago), recently completed a major renovation project including a new sanctuary, a refurbished education wing, and a new room and hallway to the west side of the building.

On Oct. 6, 1907, the cornerstone was laid by the Old Men's Association for what became Rosedale Chapter 1465 of the United Methodist Church. At one point, the magnificent, stone building housed three different congregations and has been the source of several

"seeds," or church plants. In the 1980's, the United Methodist Church, Rosedale Christian Church and Rainbow Mennonite Church formed the non-profit Sharing Community in Rosedale, Inc. and transferred property ownership to the new entity. ☒

RDA wraps up Summer Youth Employment program

RDA's annual Summer Youth Employment (SYE) program, which takes Rosedale-area high school youth and places them in a local job for the summer, closed its 2005 season with two important events: an End-of-Summer Party and a public presentation at the Board of Public Utilities (BPU).

The End-of-Summer Party, held on Aug. 11, was a time to celebrate and recognize each youth's accomplishments in the summer program. Youth, parents, job-site supervisors, and instructors from the week of job training were all invited. Approximately 25 people attended. Each youth and business/agency received a certificate for participating in the program.

On Aug. 17, about 20 youth and family members attended the bi-monthly BPU meeting to publicly thank the utility company for providing the funding for the SYE program. RDA is one of several community organizations in Wyandotte County that receives money for Summer Youth Employment. Without the funding from the BPU, the program would not exist.

At the BPU meeting, two youth

and one parent who were in the program testified to their experience and praised the effectiveness of the program. Joel Goering, RDA's Mennonite Voluntary Service worker, highlighted several successes of this year's program:

- Four of the 14 youth in RDA's program have been offered part-time jobs by their employers.
- One supervisor, who has been involved in similar summer youth employment programs for the past 13 years, said that his two youth employees this summer were "the best he has ever had."
- The 14 youth worked approximately 2,000 cumulative hours during the summer...that's 2,000 hours of labor for businesses and agencies in the community.

RDA is already thinking ahead to next year's SYE program. The program is open to 14-17 year olds. Rosedale residency is preferred, but not required. If you or someone you know is interested in applying next year or if you are an employer that would like to participate in our program, contact our office: (913) 677-5097. ☒

KU Med asks for community input on study

The University of Kansas Hospital and the University of Kansas Medical Center are soliciting comments and responses from the broader community in regard to a proposed clinical research study to evaluate the safety and effectiveness of PolyHeme, an oxygen-carrying blood substitute, in treating critically injured and bleeding patients. The hospital and medical center want the community to be informed about the study and to provide feedback about any concerns.

Under the study protocol, treatment would begin before arrival at the hospital, either at the scene of the injury or in the air/ground ambulance, and continue for 12 hours. Since blood is not presently carried in air/ground ambulances, the use of PolyHeme in these settings could address an unmet medical need for an oxygen-carrying solution where blood is currently not available. Polyheme has not yet been proven to be effective and may have unknown risks – hence the need for the proposed study.

The hospital and medical center are required to obtain community input before proceeding with this study. To learn more and to submit a feedback form, visit www.kumc.edu/polyheme. For more information, contact the study coordinator, Suzanne Porras, R.N.: (913) 588-3005. ☒

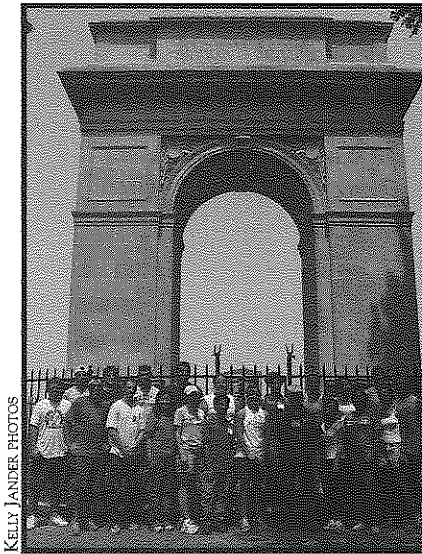
Reprinted with permission of Univ. of Kansas Hospital and Univ. of Kansas Medical Center.

Dagwood's owner Dennis "Denny" Morlan passes away

Dennis Eugene Morlan, 62, co-proprietor of Rosedale's famous Dagwood's Café (1117 Southwest Blvd.), died Aug. 3, 2005, at his home. Funeral services were held on Aug. 6 at Maple Hill Funeral Home and the burial was at Creighton Cemetery. Known as "Denny" to many of his family and friends, Dennis was a lifelong Kansas City resident with many Rosedale connections. Denny and his wife, Ruby, owned Dagwood's for the past 11 years. Many of his closest friends were customers and other business owners on Southwest Blvd. He was a founding member of the Rosedale Rowdies, a lawnmower racing organization. To view a tribute to Denny from his lawnmower racing buddies, visit www.mwlmra.com/Denny.htm. Rosedale will truly miss this native son. RDA wishes to express its condolences to the Morlan family in this difficult time.

RDA volunteers go full force in August

Thank you to almost 70 volunteers who made major improvements throughout Rosedale last month. In total, 281 volunteer hours were invested in projects involving youth, senior citizens and community spaces.



KELLY JANDER PHOTOS



Two groups helped spruce up the grounds at the Rosedale Memorial Arch in early August, including 20 students each from the KU Med Center and Blue Springs South High School.

The Hindu and the Cowboy comes to Rosedale

RDA encourages members of the Rosedale community and others in the Kansas City metropolitan area to attend a public performance of *The Hindu and the Cowboy* on Sunday, Oct. 9, 3-5 p.m., at the University of Kansas Medical Center's Battenfield Auditorium (corner of Olathe Blvd. and Rainbow Blvd. in Kansas City, Kan.). Following the performance, there will be a facilitated discussion on community issues raised by the play.

The play's content is drawn from real-life stories of Kansas City residents

and explores themes of diversity and cross-cultural relationships. The stories – which convey tragedy, healing, humor and reconciliation – were collected through personal interviews and storytelling circles. People of all ages and from many religious traditions were involved in the project.

The performance on Oct. 9 is sponsored by the KU Med Center, the Rosedale Ministerial Alliance, and other community partners. We hope to see you at this important event in our local community. ☒

Membership application

Annual business dues: \$100 ☒ Annual household dues: \$15

Name of business or name of household			
Address	City	State	ZIP code
Contact person			
Day phone	Evening phone	Fax	
E-mail address			

Please mail application, along with check made payable to: Rosedale Development Association
1403 Southwest Blvd.
Kansas City, KS 66103

ROSEDALE DEVELOPMENT ASSOCIATION

Working in partnership with residents, businesses, and institutions to build a strong and healthy community and to improve the quality of life for those who live, work, and play in Rosedale.

1403 Southwest Blvd.
Kansas City, KS 66103
Phone: (913) 677-5097
Fax: (913) 677-3437
www.rosedaleassociation.org
Monday-Friday, 9 a.m.-5 p.m.

Wendy Wilson, Executive Director
Linda Wright, Office Manager
Kelly Jander, Volunteer Coordinator
Joel Goering, MVS Volunteer
Board of Directors,
www.rosedaleassociation.org/who_board.htm

Newsletter design by Elizabeth Johnston,
Lizzardbrand Inc., www.lizzardbrand.com