

# The Rosedalian

ROSEDALE DEVELOPMENT ASSOCIATION NEWSLETTER

*Special thanks to*

## The office makeover sponsors

RDA wishes to extend a deep-felt "thank you" to all of the individuals and sponsoring businesses who contributed materials, furniture, equipment, and many hours of labor to complete the makeover project in only 5 days. Since RDA did not have to pay for any part of the capital improvement project, it allows the organization to save its resources for direct programming and fulfilling its mission to build a healthy community. All of the participating businesses are listed on this page.

### Team Office

316 Southwest Blvd.  
Kansas City, MO 64108  
(816) 221-9155

### A.B. Bradley Construction

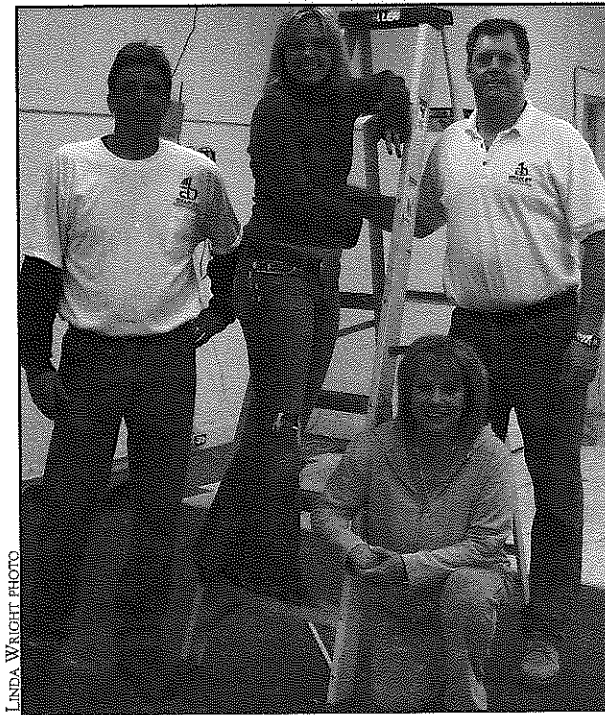
8337 Monticello Rd.  
Shawnee, KS 66227  
(913) 441-1140

### Batts Communication Services, Inc.

6333 Blue Ridge Blvd.  
Raytown, MO 64133  
(816) 353-4884

### Gold Bank

6860 W. 115th St.  
Overland Park, KS 66211  
(913) 319-5281



LINDA WRIGHT PHOTO

At left, Greg Kemp and Alden Bradley, of A.B. Bradley Construction, along with principal organizer Courtney Klimowicz of Team Office (standing on ladder) and her mother, Linda Klimowicz (kneeling), pause for a moment during the early stages of RDA's Extreme Office Makeover.

### Flack Painting

2135 E. 151st St., Suite 313  
Olathe, KS 66062  
(913) 915-6346

### Olympic Cabinet Co.

3909 Mission Rd.  
Kansas City, KS 66103  
(913) 722-5867

### Carpet Direct

### Zoom Seating

### Eurotech Seating

### Lyons & Co.

### Office Furniture Distributors

### Hartman & Associates

### Smith & Associates

## RDA re-opens doors following office makeover

On the morning of Jan. 31, RDA staff and Board members, neighborhood leaders, business owners, and city officials witnessed the ribbon-cutting and grand unveiling of RDA's remodeled and refurbished office space. The office had been closed for several days as workers from several Kansas City-area businesses teamed up to transform the RDA headquarters into a professional working environment.

The project made numerous upgrades, including new furniture and carpet, improvements to the interior and exterior of the building, and enhanced communication systems. The changes not only will increase RDA's capacity to serve the community, they also represent an investment in the future of Rosedale.

RDA was awarded the makeover after applying to a contest spearheaded by Courtney Klimowicz, a senior workplace consultant for Team Office, an office furniture supplier. The genesis of the makeover concept came from several directions. Klimowicz wanted a way to give back to the Kansas City community and she was aware of the limited financial resources of many not-for-profit organizations. In addition, she was inspired by the popular ABC television series, *Extreme Makeover: Home Edition*. Thus, she came up with the idea of an *Extreme Office Makeover: Non-Profit Edition*.

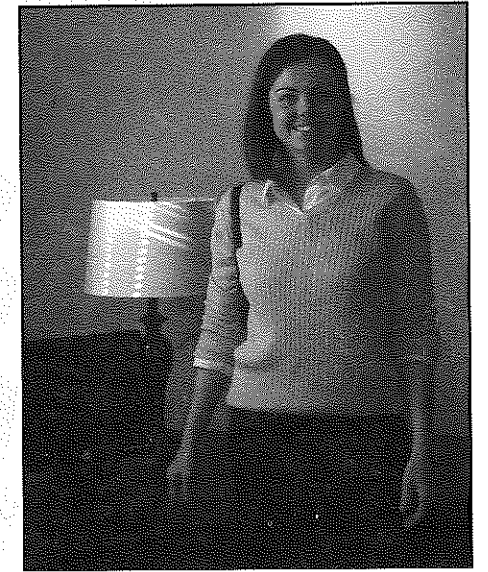
Klimowicz approached other businesses in the area about joining the effort. The response was overwhelming. Thanks to their generosity, RDA did not have to expend any of its own resources on the makeover project. Participating businesses and individuals included:

- Team Office (Courtney Klimowicz)  
John & Linda Klimowicz
- A.B. Bradley Construction  
(Alden Bradley)



ELIZABETH JOHNSTON PHOTOS

The results of RDA's office makeover are quite impressive. Pictured at left, the new conference/meeting area on the first floor, replete with historic photos of the Rosedale Arch in the background. At right, Kelly Jander, RDA's volunteer coordinator, flashes a smile in her refurbished office on the second floor. Come visit us in our new surroundings!



- Batts Communication Services  
(Kyle Batts, Roy McCaulley)
- Gold Bank (Dave Bradshaw)
- Flack Painting (Andy Flack)
- Olympic Cabinet Co. (Craig May, John Wright)
- Carpet Direct (Chuck Owens)
- Zoom Seating (Dave Maddox)
- Eurotech Seating (Lindsey Hartman)
- Lyons & Co. (Libby Rulo)
- Office Furniture Distributors  
(Mark Wood)
- Mark Hartman & Associates
- Don Smith & Associates

Now that the makeover is complete, RDA will strive to continue its commitment to building a strong and healthy community and improving the quality of life for those who live, work, and play in Rosedale. The transformation of RDA's office will only provide more impetus to fulfilling this mission. ☺

## Upcoming Events

### February 21

RDA Board meeting. 1401 Southwest Blvd. 5:30-6:30 p.m.

### March 1

Boulevard Row (new townhome development) ground-breaking ceremony. 45th Ave. & Rainbow Blvd. 12:00 p.m.

### March 6

"Young at Heart" senior program. Rosedale Congregational Church. 4326 Lloyd. 11:30 a.m.-1:30 p.m.

### March 9-10

Used Books and Bric-A-Brac Sale to benefit the Shepherd's Center of KCK. Conference Center of KCK Community College. 7250 State Ave. 8:00 a.m.-6:00 p.m.

### March 15

Rosedale Leadership Council. 1403 Southwest Blvd. 5:30-6:30 p.m.



1403 Southwest Blvd.  
Kansas City, Kansas 66103

Non-Profit Org.  
U.S. Postage  
PAID  
Permit No. 233  
Kansas City, KS

RETURN SERVICE REQUESTED

*Paid Advertisement*

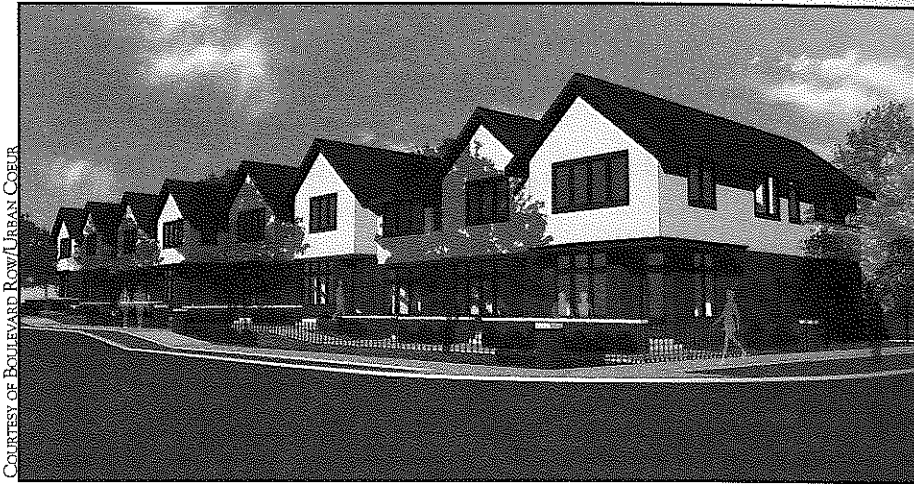
## New townhomes and flats along Rainbow Blvd.

Construction will begin spring of 2006 on the newest Urban Coeur development: Boulevard Row. A ground-breaking ceremony will kick it off on Wednesday, March 1 at 12 p.m. at the corner of Rainbow Boulevard and 45th Avenue.

Boulevard Row will bring new vitality to the neighborhood as 12 unique townhomes and flats appear along the northeast corner of Rainbow Boulevard and 45th Avenue. Empty lots will give way to the new, exciting Boulevard Row development with a group of distinctive "prairie style" homes designed by KEM Architects.

"Until now, residential developments have failed to keep pace in the surrounding neighborhoods. Boulevard Row will be the first new condominium townhome development along Rainbow Boulevard," says John Hoffman, Principal for Urban Coeur Development. "Our goal is to regenerate and beautify Rainbow, provide new housing for those looking for an urban lifestyle, and act as a catalyst for property owners up and down the Boulevard to invest and improve their properties."

Amenities include maintenance-free living, beautifully designed landscape with garages and lighted off-street parking. Gourmet kitchens will include an electric range/oven, dishwasher, microwave, and garbage disposal. Hardwood floors, interior paint, and solid surface



**An artist's rendering of the new Boulevard Row townhomes, to be built near Rainbow Blvd. and 45th Ave.**

countertops will be available in a variety of colors. Each unit will have washer and dryer hookups, a security alarm system, a private patio and/or deck, hard-wired smoked detectors and will be cable and high speed internet ready. Other features will include a front-gated courtyard and patio, along with extra visitor parking behind the units. Plus, pets are welcome at Boulevard Row!

"I live and work in this neighborhood. The location, price point and floor plans will appeal to so many people," says Becky Hopkins, Prudential Kansas City

Realty agent on the Boulevard Row sales team. "We look forward to encouraging buyers to become new neighbors."

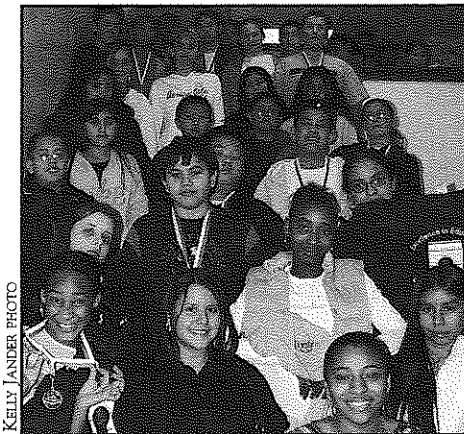
Located near the Plaza, KU Medical Center, Westport and 39th Street Annex, Boulevard Row provides additional convenience. Pricing starts at \$155,000 for the one-bedroom flats with flex space, and \$250,000 for the two-bedroom townhomes. The first units will be available approximately 12 months after construction begins. For more information, call the Prudential Kansas City Realty sales team: (816) 753-3001.

## Rosedale Middle Schoolers demonstrate excellence

Who says young people in the urban core cannot succeed? A record total of 81 students from Rosedale Middle School met the requirements for the Excellence in Education award for the 2nd quarter.

This is a remarkable accomplishment. To receive the Excellence in Education award, students must achieve high standards in three areas: (1) academics/grades; (2) attendance/participation; and (3) citizenship/behavior. RDA and the Rosedale community congratulate these students for their hard work and dedication to excellence. Keep up the good work!

In addition to Rosedale Middle, the Excellence in Education program also operates at Holy Name, Frank Rushton Elementary, and T.A. Edison Elementary schools. ☎



**The 81 Excellence in Education winners from Rosedale Middle School assemble on a staircase at the school. 55 of the students were first-time award recipients. Both numbers are records for the Excellence in Education program, which is in its third year at RMS.**

### ROSEDALE DEVELOPMENT ASSOCIATION

Working in partnership with residents, businesses, and institutions to build a strong and healthy community and to improve the quality of life for those who live, work, and play in Rosedale.

1403 Southwest Blvd.  
Kansas City, KS 66103  
Phone: (913) 677-5097  
Fax: (913) 677-3437  
www.rosedaleassociation.org  
Monday-Friday, 9 a.m.-5 p.m.

**Wendy Wilson**, Executive Director  
**Linda Wright**, Office Manager  
**Kelly Jander**, Volunteer Coordinator  
**Joel Goering**, MVS Volunteer Board of Directors,  
www.rosedaleassociation.org/who\_board.htm

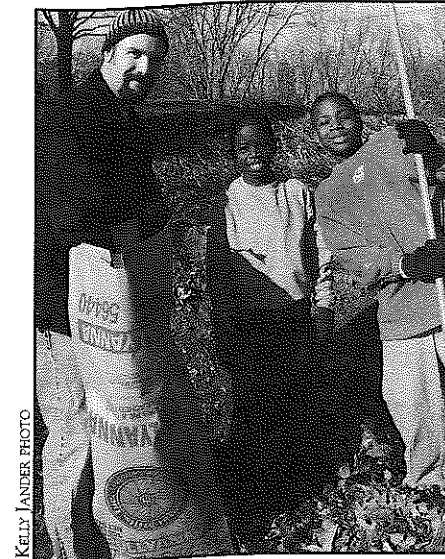
Newsletter design by Elizabeth Johnston, Lizzardbrand Inc., www.lizzardbrand.com

## Living the legacy of Martin Luther King, Jr.

On Monday, Jan. 16 (Martin Luther King, Jr.'s observed birthday), several boys from the Rosedale area joined Eric Ozman, Youth Ministry Leader for Joshua Tent Ministries, to rake leaves and clean the yard of a disabled homeowner on Shawnee Road.

Ozman has been tutoring and mentoring many of the boys for the past six months. He is in the process of starting a new 501(c)3 not-for-profit organization, called Neighborhood Student Ministries. The organization will seek a holistic, long-term approach to strengthening Rosedale youth, covering such diverse areas as academics, recreation, community service, cultural enrichment, and discipleship.

"I'm always asking myself, 'How do I model what it means to be a servant-leader?'" says Ozman. "I want [the students] to know the joy of giving your life away for others - [in terms of] time,



**Eric Ozman (left) led a group of Rosedale youth on a service project on MLK Day last month. They raked leaves for a disabled Shawnee Road homeowner.**

energy, and talent."

For more information on Joshua Tent Ministries, visit: [www.joshuatent.com](http://www.joshuatent.com). ☎

## Utility tax rebate offered to KCK seniors

Until March 31, 2006, senior citizens will be able to take advantage of a utility tax rebate. The program offers senior citizens a refund on a portion of the amount paid for utilities during 2005. Persons applying must be 65 years of age during the entire year of 2005, live in the city of Kansas City, Kan., and their total income must not exceed \$10,000. The maximum rebate is now \$300, as Mayor Reardon and the U.G. Board of Commissioners recently voted to increase funding for the program.

Applications will be taken at the Municipal Office Building East, 701 N.

### Hey K-12 students!

Need help with your homework?

Call the Homework Zone:

**(816) 877-0777**

It's free!

Available Monday-Thursday, 3:30-7:00 p.m.

Trained teachers will assist you. Sponsored by YouthNet of Greater Kansas City.

## Help save a life!

**Donate blood at the Rosedale Community Blood Drive.**

**Monday, April 10**  
3:00-7:00 p.m.

Rainbow Mennonite Church (across the street from the RDA office)  
1444 Southwest Blvd.  
Kansas City, KS 66103

All blood donations will benefit local hospital patients.

For medical eligibility questions, call: 1-888-647-4040.

To sign up, contact Joel Goering: (913) 677-5097.

## Bring down your high energy bills!

**FREE** Home Winterization Kits Includes:

- Plastic sheeting to cover windows and doors
- Rope & acrylic caulking to seal cracks
- Low-flow shower heads
- Energy-efficient fluorescent light bulbs

To qualify, individuals & families must fall below 150% of the federal poverty level (\$14,355 for individuals, \$29,025 for a family of 4).

To obtain a kit, call RDA: (913) 677-5097.

### Membership application

Annual business dues: \$100 ☎ Annual household dues: \$15

Name of business or name of household

Address City State ZIP code

Contact person

Day phone Evening phone Fax

E-mail address

Please mail application, along with check made payable to:  
Rosedale Development Association  
1403 Southwest Blvd.  
Kansas City, KS 66103

# Casas Nuevas!

HEARTH HOMES, L.L.C.

# DISPONIBLE AHORA!

Las propiedades localizadas en el 4108 & 4110 de la calle Springfield en Kansas City, Kansas, son casas de una planta y un sótano con salida al exterior. Ambas tienen tres (3) alcobas y dos (2) baños en la planta superior y un baño sin terminar en el nivel inferior, también cuentan con área de lavandería y un amplio garaje para dos carros. El área aproximada de cada vivienda es de 1.245 pies cuadrados. Las viviendas cuentan con una forma de energía eficiente llamada "Energy Smart," una decisión con la que puede vivir.

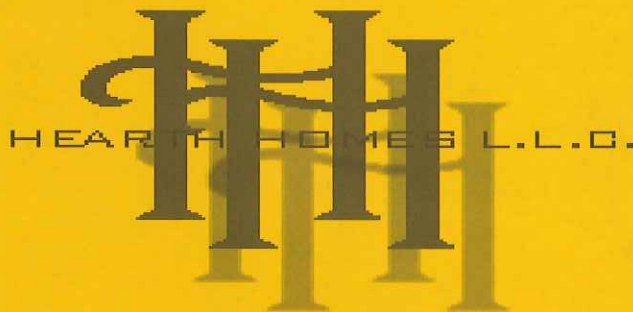
Como puede usted lograr vivir en una vivienda con "Energy Smart?" Una comparación del consumo anual de energía para enfriar y calentar las casas, entre el uso de energía convencional y el uso de "Energy Smart" nos muestra lo siguiente:

- Una vivienda que usa energía eléctrica para el aire acondicionado y gas para la calefacción gasta aproximadamente \$2.370 dolares al año!
- El costo para el mismo propósito con el uso de "Energy Smart" será aproximadamente de \$878 dolares al año, lo que nos muestra un ahorro de \$1.492 dolares anuales.
- El uso de la unidad 13 (SEER) instalada en nuestras viviendas trabaja de una manera más eficiente que cualquiera de las dos comparaciones anteriores; lo que le dará a usted la oportunidad de ahorrar aún más en el costo de energía para su casa!

Aprenda como las viviendas que usan "Energy Smart" son más eficientes, seguras y confortables para usted y toda su familia. Para mayor información llamar a Glen Darrow al (913) 961-5850.

He aquí una mirada a su futura casa y algunos detalles de acabados que incluyen lo siguiente:

- Calentador de agua eléctrico para complementar el uso de "Energy Smart".
- \$500 dolares para la terminación de jardines (Costo de contratista).
- Terraza posterior de madera con salida de la cocina.
- Cubierta de teja de composición con garantía de 30 años.
- Ventanas en vinilo y vidrios térmicos (No requiere mantenimiento de pintura).
- Baño principal con ducha de 5 pies, baño auxiliar con tina.
- Cielorascos abovedados en la sala, comedor y alcoba principal; el resto de la casa tiene cielorascos planos de nueve(9) pies de altura.
- Estufa, lavaplatos y procesador de desechos, todos eléctricos.
- Sistema estructural de piso que reduce el ruido, y subsuelo de Madera con sistema de agarre machiembriado de 3/4 de pulgada.
- Nivel de sótano con garaje doble, depósito amplio, lavandería, cuarto de refugio contra tornados, área familiar y baño con ducha sin terminar.
- Cimientos amplios con drenaje a prueba de agua.
- Tratamiento contra termitas.
- Amplio porche frontal y posterior en concreto.
- Vía vehicular privada en asfalto y concreto.
- Listones de cemento (Hardie Plank) como acabado de fachada con 30 años de garantía y enchape de piedra en el frente.



HEARTH HOMES, L.L.C.

3141 Main St. 2nd Floor, Kansas City, MO 64111

Oficina: 913-961-5850

Fax: 816-753-8411

# New Listings

## HEARTH HOMES, L.L.C.

# AVAILABLE NOW!

The properties at 4108 & 4110 Springfield in Kansas City, Kansas are single story homes with walk-out basements, 3 bedrooms, 2 baths with another bath *roughed-in* on the lower level, a two car garage, and a laundry facility. Each home also contains approximately 1,245 square feet. These homes are energy efficient houses called "*Energy Smart*," a decision YOU can live with.

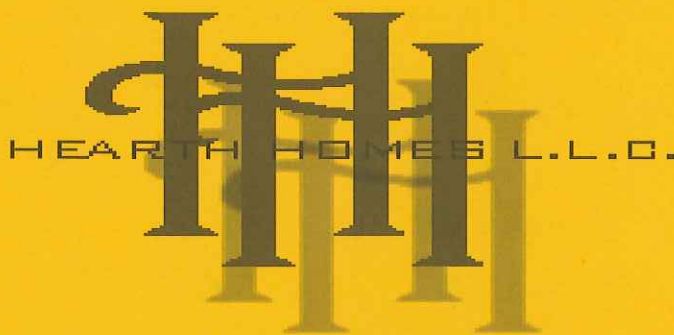
How can you afford NOT to live an "*Energy Smart*" home? Here is a comparison of annual heating and cooling costs between a conventional home and an "*Energy Smart*" home:

- Basic electric air conditioning with conventional gas heat would cost approximately \$2,370!
- The cost with an "*Energy Smart*" Heat Pump and Total Electric Home would be approximately \$878, which is an annual savings of \$1,492.
- However, the Seasonal Energy Efficiency Ratio (SEER) 13 Unit used in our homes is even more efficient than conventional and the average "*Energy Smart*" homes! By using higher efficiency heat pumps, you will receive additional savings!

Learn how "*Energy Smart*" homes can be more efficient, safe, and comfortable for you and your family today! Contact Glenn Darrow at Hearth Homes, LLC, 913-961-5850.

Here is an inside look to your future home! Some details and features of the homes include:

- First, a 50-gallon electric water heater to compliment your new "*Energy Smart*" Home!
- \$500 Landscaping Allowance (Contractor's Cost).
- Wood deck off the kitchen.
- 30-year composition shingle roof.
- Single hung vinyl windows with insulating glass. No painting required!
- Master bathroom has a 5' shower stall and a bathtub is included in the Guest bathroom.
- Nine foot ceilings throughout with vaulted ceilings in the Living/Dining Room area and in the Master Bedroom.
- Kitchen appliances such as an electric range, dishwasher and disposal are included!
- A *Silent Floor* framing system with tongue & groove  $\frac{3}{4}$ " plywood sub-floor.
- Full basement with 2-car garage, large storage area, laundry, safe room, unfinished family room and a  $\frac{3}{4}$  bath roughed-in.
- Enhanced foundation drainage and waterproofing.
- Termite pretreatment.
- Large concrete front porch. Concrete patio off walk in rear.
- Asphalt driveway with concrete apron at garage and concrete approach.
- Hardie plank cement fiber board lap siding and Smart-Sidetrin with 30 year warranty and stone veneer at front.



HEARTH HOMES, L.L.C.

3141 Main St. 2nd Floor, Kansas City, MO 64111    Office: 913-961-5850    Fax: 816-753-8411

Rosedale Business of the Month

**R.F. Fisher Electric Co., L.L.C.**

Address: 1707 W. 39th Ave., Kansas City, Kan. 66103  
 Phone: (913) 384-1500, www.rffisher.com

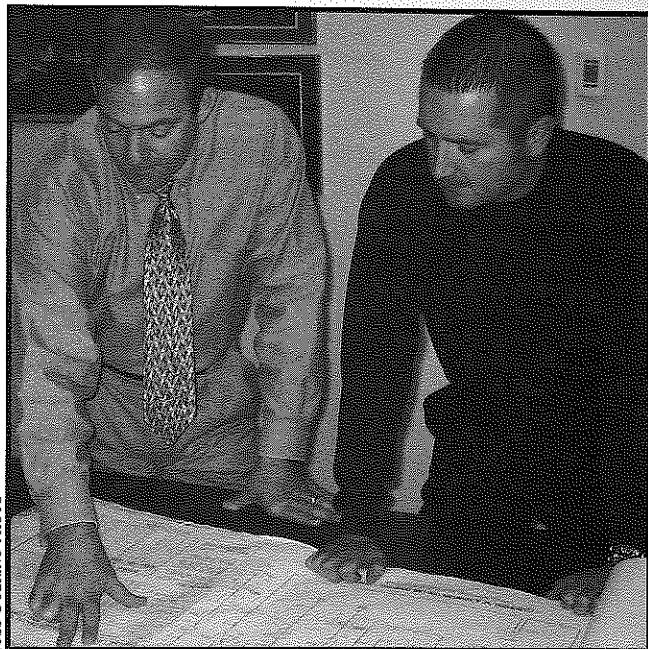
Hours of Operation: 7 a.m. – 5:30 p.m., Mon.-Fri., Service Dept. 24 hrs./day, 7 days/week

Did you know that one of the largest and fastest-growing companies in the entire Midwest is located in Rosedale's very own backyard?

R.F. Fisher Electric Co. has been serving commercial and industrial clients for the past 43 years, all based from its headquarters in the Rosedale district of Kansas City, Kan. From pre-construction, to renovation, to upgrades and emergency repair service, the company strives to meet a variety of electrical needs.

Locally owned and operated, 90% of R.F. Fisher's work is in the greater Kansas City metro area. However, the company has projects in about 6-8 U.S. states besides Kansas and Missouri, as well.

R.F. Fisher often is hired for large construction projects. Some recent project sites include the new Legends shopping area in western Wyandotte County, the KCI airport,



Rodney Wichtendahl (left), Vice President-Estimating, and Gavin Seeley, Executive Vice President, study the electrical plans for one of R.F. Fisher's work projects. Gavin is the son of the company's current Owner and President, Gary Seeley.

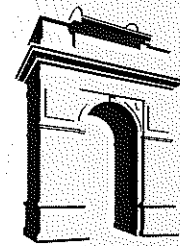
the Linda Hall Library on the UMKC campus, and the KCK school district.

In addition to providing traditional electrical services to commercial and industrial clients, the company also designs and installs comprehensive communications systems, including voice/data/video networking, fiber optics, and Auto-CAD. R.F. Fisher has contracts with such telecommunications giants as SBC, AT&T, and locally-based Sprint.

The company has a Design & Build division, which helps plan and implement major electrical projects using the latest engineering

and technology.

Furthermore, R.F. Fisher offers 24 hr/day, 7 day/week emergency service for routine maintenance and repair. The company has over 50 full-service trucks and on-call relationships with suppliers to respond quickly to clients' diverse electrical needs.



# The Rosedalian

## ROSEDALE DEVELOPMENT ASSOCIATION NEWSLETTER

### Wyandotte County grapples with higher tax bills in the midst of economic growth

One of the most common grievances from Wyandotte County residents and businesses is that their property taxes are too high. Despite the Unified Government's consistent effort in the last 10 years to reduce the property tax mill levy, the combination of rising home values and increased tax rates from the other local taxing bodies has placed a real strain on property owners in the county.

As the county has experienced an economic boom and record growth in recent years, the county's total property valuation has increased significantly. Just in the last year, property values jumped an average of 9%, including residential and commercial property.

While the economic growth and accompanying rise in home and other property values is certainly good news, it brings with it the unfortunate prospect of higher taxes. Trying to balance appropriate tax relief with

the continuing economic growth is a key challenge facing the county in the next few years.

Mayor Joe Reardon and the U.G. Board of Commissioners have indicated a desire to further reduce the U.G.'s portion of the property tax rate. However, the U.G. is not the only taxing jurisdiction within the county. The various local school districts and Kansas City Kansas Community College also collect taxes from property owners.

Part of the reason Wyandotte County property owners have not seen the full effects of the U.G.'s reduced mill levy (decreased 21% since the 1997 consolidation of the city and county governments) is that the other taxing bodies have increased their rates.

Pressure is mounting on all the taxing jurisdictions to reduce the property tax burden, so that the county's economic progress will continue and not be stymied by high taxes.

### Appraisals mailed to property owners, appeals due March 31

The county's appraisal office mailed its property value notices the first week of March. To determine property values, the appraiser compares sale prices of homes and analyzes new construction trends within the county. In addition, the appraiser also must ensure that assessed property values are within 10% – above or below – of fair market value, in order to comply with state law.

Property owners who disagree with the county's appraisal are entitled to appeal. To do so, fill out the request form on the back of the valuation notice and mail it to:

**Appraiser's Office**  
 9400 State Ave.  
 Kansas City, KS 66112

Appeals must be postmarked by March 31. To contact the appraiser's office by phone, call: (913) 573-8400.

To look up the appraised and assessed values of properties within Wyandotte County, visit the U.G. website (www.wycokck.org), go to the "Residents" tab, and click on "Appraisal Search."

### Rosedale and Pembroke Hill middle schools partner to develop student leaders

Through a unique partnership, students from both sides of the state line are stepping out of their comfort zones and coming together to learn how to become better leaders in their communities.

The program, *Making a Difference-Block by Block*, consists of five after-school sessions designed to give students the knowledge and skills they need to be positive examples in their neighborhoods and take charge in other situations throughout their lives. The program is being taught by Susan Keim, program manager.

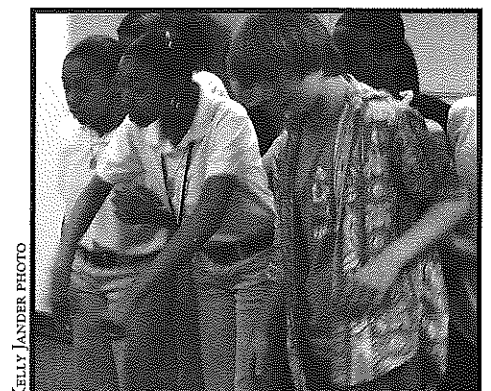
Through a series of team building, self exploration and role playing exercises, students learn to see the world through the eyes of others and are chal-

lenged to answer the question, "If we got it right, what would it [their community] look like?"

About 30 sixth-grade students from Rosedale and Pembroke Hill middle schools and half-a-dozen adults from both schools and RDA are participating in the program. Sessions rotate between schools each week so students have an extra opportunity to explore the similarities and differences between their schools and neighborhoods.

Upon completion, participants will receive a \$500 grant to carry out a community service project of their choosing.

More information about the leadership training program can be found at [www.leadershipwyco.org](http://www.leadershipwyco.org).



Students from Rosedale Middle School and Pembroke Middle School try to figure out the solution to a problem during a team-building exercise, which was part of their joint leadership training sessions. The students had to learn how to work together.



1403 Southwest Blvd.  
 Kansas City, Kansas 66103

RETURN SERVICE REQUESTED

Non-Profit Org.  
 U.S. Postage  
 PAID  
 Permit No. 233  
 Kansas City, KS

## Rosedale seniors are still "Young at Heart"

In collaboration with the Rosedale Congregational Church, the Rosedale Community Project (RCP) is sponsoring an outreach program for senior citizens called "Young at Heart." The seniors themselves decided on the name for the program.

Participants meet on the first Monday of each month at the church, located at 4326 Lloyd near Frank Rush-ton Elementary School in Rosedale. The program runs from 11:30 a.m. to approximately 1:30 p.m. The seniors always enjoy a nutritious lunch, followed by a group sharing time and various activities, such as singing, playing games, and making arts and crafts.

The group has also had guest speakers from the Landon Center on Aging and the KUMC Family Medicine Department. The speakers talk about issues relevant to seniors.

Participants include not only current members of the church, but also former members and those that aren't able to attend Sunday services, as well as friends of church members and people from the surrounding neighborhoods.

The impetus for the program came from the church and Pastor Jane Heide, who wanted to offer some sort of enriching and meaningful activity for senior citizens. Heide approached the Rosedale



Two participants in the Rosedale Congregational Church's "Young at Heart" program diligently cut out shapes to glue together as part of an arts and crafts activity during the March 6 gathering. The program is open to all seniors who are 70 years of age and older. The next meeting is April 3.

Community Project about assisting with the start-up and ongoing organization of the program. One of the RCP's student social workers, Betsy Thomas, grabbed the opportunity to help.

"I thought it would go well with one of my classes in the fall semester, in which I had to design a program, and I had also worked with a seniors' program a little bit during the summer in Romania," says Thomas.

The group has been meeting once a month since November. The program has been a real success so far. Many participants have expressed positive

feedback to Heide and Thomas, indicating that they have enjoyed the activities and speakers. Attendance has ranged from 10-15 people per meeting, but the organizers hope to add more participants in the upcoming months.

"It is a nice time for people to get together and eat, chat, and have fun," says Thomas.

If you or someone you know would like to join the Young at Heart group, contact the church (913) 236-6337 or the RCP (913) 677-2561, or simply show up on the first Monday of the month at the church. ☐

## Utility tax rebate offered to KCK seniors

Until March 31, 2006, senior citizens will be able to take advantage of a utility tax rebate. The program offers senior citizens a refund on a portion of the amount paid for utilities during 2005. Persons applying must be 65 years of age during the entire year of 2005, live in the city of Kansas City, Kan., and their total income must not exceed \$10,000. The maximum rebate is now \$300, as Mayor Reardon and the U.G. Board of Commissioners recently voted

to increase funding for the program.

Applications will be taken at the Municipal Office Building East, 701 N. 7th St., Room 323, KCK, in the Unified Government Clerk's Office. Eligible persons should bring all gas, telephone, and BPU bills paid during 2005; proof of income, Social Security statements, interest statements, etc; and Social Security number. If you have questions, contact the U.G. Clerk's Office: (913) 573-5260. ☐

## Meet your state legislators

There are many critical issues being debated at the state level in Topeka this session, including: school funding, tax cuts, expanded gambling, concealed carry of handguns, eminent domain, and others. Make your voice heard at upcoming "Coffee & Conversation" sessions with the state delegation from Wyandotte County. The sessions are free and open to anyone.

**Sat., March 25, 9:00-10:00 a.m.** – Country Club Bank, 11006 Parallel Pkwy.

Sen. Chris Steineger, Rep. Margaret Long, Rep. Bonnie Sharp

**Sat., April 15, 9:00-10:00 a.m.** – KCK Main Library, 625 Minnesota Ave.

Rep. Louis Ruiz, Sen. David Haley, Rep. Tom Burroughs, Rep. Valdenia Winn

## Did you know?

### Rosedale History Tidbits

Rosedale was not always a part of Kansas City, Kansas. Prior to 1922, Rosedale was its own city. Incorporated in 1877, Rosedale's early development was propelled by the arrival of the railroads and the Kansas Rolling Mill. Along with the Rosedale Coal and Mining Company and the Thor Iron Works, these industries brought people and economic activity to the area.

According to native Rosedale historian Margaret Landis, "Rosedale grew up around the Rolling Mill." Located on Kansas City Avenue (now Southwest Blvd.) near the current site of Strasser's Hardware, the Rolling Mill played a vital role in Rosedale's early days. By 1883, the Mill had closed due to an economic depression and related financial trouble, but its impact had been felt.

Of course, the railroads continued functioning as other industries emerged along what is now Southwest Blvd. (and, as Rosedale residents and businesses know all too well, the railroads are still in existence today).

**Source:** Landis, Margaret, *The Winding Valley and the Craggy Hillside, 1976.* ☐

## Upcoming Events

### April 3

"Young at Heart" senior program. Rosedale Congregational Church. 4326 Lloyd. 11:30 a.m.-1:30 p.m.

### April 10

Rosedale Community Blood Drive. Rainbow Mennonite Church. 1444 Southwest Blvd. 3:00-7:00 p.m.

### April 15

Easter Egg Hunt. Whitmore Park. 1400 block of Southwest Blvd. (across the street from the RDA office).

KUMC Street Fair. NE corner of 39<sup>th</sup> and Rainbow. 10:00 a.m.-2:00 p.m.

### April 18

RDA Board meeting. 1401 Southwest Blvd. 5:30-6:30 p.m.

### April 19

Rosedale Leadership Council. 1403 Southwest Blvd. 5:30-6:30 p.m.

## 21st Annual Whitmore Park Easter Egg Hunt



Saturday, April 15  
10:30 a.m.  
1400 Block of S.W. Blvd.

## Attention

ROSEDALE BUSINESS OWNERS!

Coming soon!

## "Smart Business Series"

Designed to equip you with the skills to grow your business.

Stay tuned for more details.

## Help save a life!

### Donate blood at the Rosedale Community Blood Drive.

Monday, April 10  
3:00-7:00 p.m.

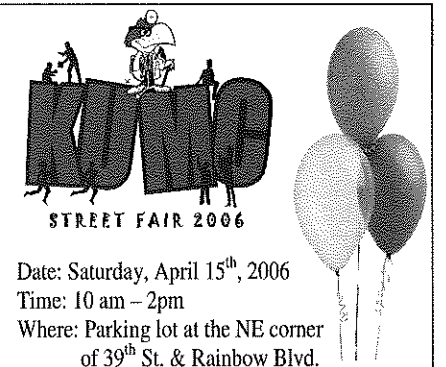
Rainbow Mennonite Church (across the street from the RDA office)

1444 Southwest Blvd.  
Kansas City, Kan. 66103

All blood donations will benefit local hospital patients.

For medical eligibility questions, call:  
1-888-647-4040.

To sign up, contact Joel Goering:  
(913) 677-5097.



Date: Saturday, April 15<sup>th</sup>, 2006  
Time: 10 am – 2pm  
Where: Parking lot at the NE corner of 39<sup>th</sup> St. & Rainbow Blvd.

GAMES, RIDES, PRIZES!  
FREE HEALTH SCREENING!  
Cholesterol, Blood pressure, glucose, foot care, weight, BMI checks FREE

## Membership application

Annual business dues: \$100 ☐ Annual household dues: \$15

Name of business or name of household \_\_\_\_\_

Address \_\_\_\_\_ City \_\_\_\_\_ State \_\_\_\_\_ ZIP code \_\_\_\_\_

Contact person \_\_\_\_\_

Day phone \_\_\_\_\_ Evening phone \_\_\_\_\_ Fax \_\_\_\_\_

E-mail address \_\_\_\_\_

Please mail application, along with check made payable to:  
Rosedale Development Association  
1403 Southwest Blvd.  
Kansas City, KS 66103

## ROSEDALE DEVELOPMENT ASSOCIATION

Working in partnership with residents, businesses, and institutions to build a strong and healthy community and to improve the quality of life for those who live, work, and play in Rosedale.

1403 Southwest Blvd.  
Kansas City, KS 66103  
Phone: (913) 677-5097  
Fax: (913) 677-3437  
www.rosedaleassociation.org  
Monday-Friday, 9 a.m.-5 p.m.

**Wendy Wilson**, Executive Director  
**Linda Wright**, Office Manager  
**Kelly Jander**, Volunteer Coordinator  
**Joel Goering**, MVS Volunteer  
**Board of Directors**,  
www.rosedaleassociation.org/who\_board.htm

Newsletter design by Elizabeth Johnston,  
Lizzardbrand Inc., www.lizzardbrand.com