

Artists of Rosedale

Marie Deborah Wald, Pottery

4415 Francis St., Kansas City, Kan. 66103

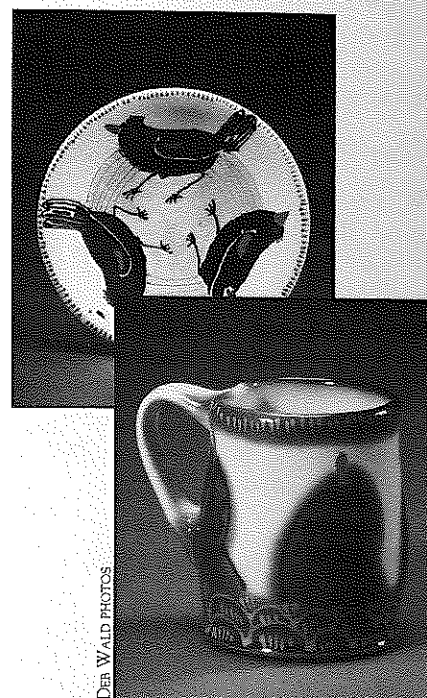
Phone: (913) 432-5948, Website: www.homepage.mac.com/waldpottery, E-mail: waldpottery@mac.com

This article is the second in a series about Rosedale artists, many of whom live and work in this community, either on a freelance basis or through their own companies. The purpose of the series is to provide readers of The Rosedalian with a glimpse into a different kind of business than what has been typically featured on these pages in the past.

"I love making pots," says Deb Wald, long-time Rosedale resident and ceramic potter. Wald's passion for ceramics is palpable, especially during a visit to her backyard studio where she does most of her work.

Typically, Wald makes a variety of "functional" pieces, including plates, cups, mugs, jars, vases, and casserole dishes. "Functional" pieces are those that have practical or utilitarian value. Working almost entirely with porcelain clay, many of Wald's pieces are inspired by her love of gardening: images of birds, flowers, and plants are frequent.

In the past, Wald participated in lots of art fairs, but now she focuses on her two annual sales and on regional and national juried art shows. Her two annual sales are held at her house and backyard studio in May (Spring Sale) and December (Holiday Sale). This year's Holiday



These two pieces are typical of Wald's collection of porcelain clay works. The top piece is a plate decorated with three black birds, while the bottom piece is a mug decorated with blue birds. If you're interested, Wald's studio is open by appointment, so give her a call or send her an e-mail.

Sale will be held December 1-3.

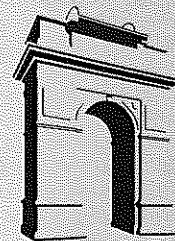
Among the national juried shows that she has entered is the Strictly Functional Pottery National, held in Lancaster, Pa. She received a Juror's Choice Award for her Blue Bird Plate.

Wald earned a B.F.A. in ceramics from S.W. Missouri St. in 1979, before taking classes at the Kansas City Art Institute under famed ceramicists Victor Babu and Ken Ferguson. She has lived in the Spring Valley neighborhood in Rosedale since 1993. She built her backyard studio in 1994. "I love my neighborhood," she says excitedly.

Wald has participated in several charitable arts events, having submitted pieces for the Accessible Arts Silent Auction (Accessible Arts is a not-for-profit organization seeking to promote the arts for children with disabilities) and for an auction benefiting the Art Institute's scholarship fund. She has also been a loyal RDA supporter over the years.

Check out her website: www.homepage.mac.com/waldpottery, to see a sampling of her pieces. In addition, her studio is open year-round by appointment. ☎

Non-Profit Org.
U.S. Postage
PAID
Permit No. 233
Kansas City, KS



The Rosedalian

ROSEDALE DEVELOPMENT ASSOCIATION NEWSLETTER

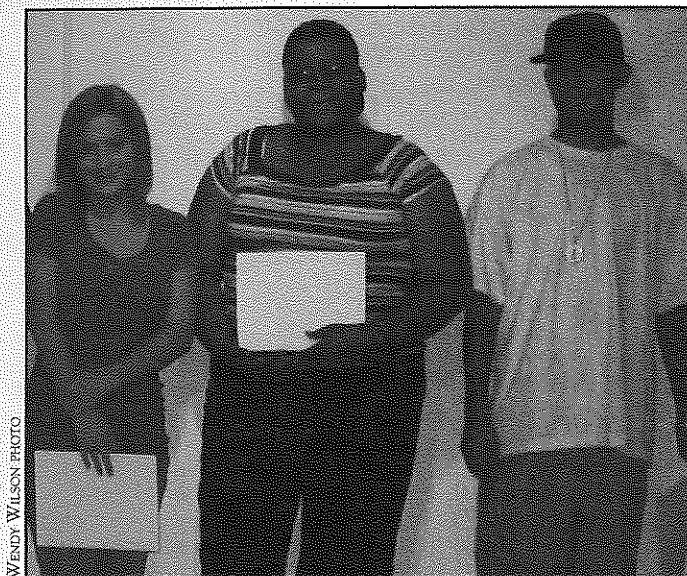
Summer Youth Employment program concludes with End-of-Summer Party

On the evening of Aug. 9, more than 25 persons attended the End-of-Summer Party to mark the completion of this year's Summer Youth Employment (SYE) program. The gathering was designed as a fun way to celebrate and recognize the accomplishments of each youth in the program, as well as to publicly thank the businesses that partnered with RDA to supervise a youth in the program.

The SYE program is one of RDA's most effective social programs. For those who may not be familiar with the program, now in its 8th year, it provides local high school-age young people with an opportunity to work in a paid job for 6-8 weeks during the summer. The youth work at local businesses in a variety of fields, including: health care, banking, design and fabrication, custodial services, grocery and food service, and clothing retail.

The youth are required to attend a series of employment skills training sessions at the beginning of the summer to prepare them for their job; for many of them, it is their first job. They are paid through a grant from the Board of Public Utilities (BPU). Thus, each business does not pay the youth assigned to them, but is simply responsible for supervising their tasks.

Those who attended the End-of-Summer Party were treated to a full spread of hamburgers and hot dogs, potato salad, coleslaw, baked beans, chips, and dessert. Youth, parents, job-site supervisors, and instructors from the job skills training sessions were all invited. Mishkat Az-Zubair, executive director of Wyandotte Serves and Wyandotte Works, spoke to the group about the importance of education and striving to do one's best at all times. Joe Dick, official representative from the BPU, also commended the youth for their achievement



Millie Knopp, Kimberly Petty, and Richard Sanchez (left to right), three of the student participants in this year's Summer Youth Employment program, proudly display their certificates of achievement during the End-of-Summer Party on Aug. 9. While the SYE program is open to all 14-16 year-olds in Kansas City, Kan., it is Rosedale-focused: most of the youth and partnering businesses are from Rosedale.

this summer. Each youth and business received a certificate for participating in the program.

Some of the highlights from this year's program:

- 14 youth were hired into the program; 12 of them completed their full term of employment.
- 37 youth inquired or applied to the program, a sign of its popularity and competitiveness.
- The youth worked approximately 2,000 cumulative hours during the summer...that's 2,000 hours of labor for businesses and agencies in the community!
- At least two of the youth have been offered part-time jobs by their employers.

RDA is already thinking ahead to next year's SYE program. The program is open to 14-16 year olds. Rosedale residency is preferred, but not required. If you or someone you know is interested in applying next year or if you are an employer that would like to participate in our program, contact our office: (913) 677-5097. ☎

Upcoming Events

August 24
Rosedale Middle School Open House. All community members are welcome. 3600 Springfield St. 6:00-8:00 p.m.

September 4
Labor Day. RDA office closed.

September 19
RDA Board meeting. 1401 Southwest Blvd. 5:30-7:00 p.m.

September 20
Rosedale Leadership Council meeting. 1401 Southwest Blvd. 5:30-6:30 p.m.

The Rosedale Youth Academy
will begin its first session of the 2006-07 school year sometime in early to mid-September. The Academy meets on Wednesday afternoons and is open to 5th and 6th grade students. To register, call: (913) 677-2561.



1403 Southwest Blvd.
Kansas City, Kansas 66103

RETURN SERVICE REQUESTED

Former RCP student hired as first Unified Government "Neighborhood Advocate"

Andrea (Bustamante) Generaux, who completed a field practicum with the Rosedale Community Project during the 2003-04 school year, has been selected to become the Unified Government's first official "Neighborhood Advocate," a professional program staff position designed to assist and advocate for grassroots neighborhood groups as they navigate the various service departments and legal processes of the U.G.

Mayor Joe Reardon has been very supportive of the new position, as part of the U.G.'s continuing efforts to improve and strengthen neighborhoods. Andrea will report to Mary Jane Johnson, executive director of Liveable Neighborhoods, Inc., which is a non-profit arm of the U.G.'s Neighborhood Resource Center in the Indian Springs shopping center.

In her new job, Andrea will meet and work with neighborhood groups across the city/county to help resolve ongoing problems and proactively plan for the future. Andrea will also work with such U.G. departments as code enforcement, community policing, rental and business licensing, building inspection, and others, to more responsively address neighborhood concerns. She began the new job on Aug. 10.

"It will be interesting," says Andrea. "I have a lot of new ideas that I hope to implement."

RDA is proud of Andrea. It is gratifying to see an alumnus of the Rosedale Community Project (RCP) become the U.G.'s first "Neighborhood Advocate," since RDA is in the "business" of being neighborhood advocates on a daily basis. Andrea joined the RCP during the 2003-04 school year while completing her Masters in Social Work

(MSW) at the University of Kansas. Since graduation in May 2005, she has worked for the Kansas City, Kan. Police Department's Victim Services Unit.

The RCP, in partnership with RDA, is one of the field practicum sites for Bachelor's and Master's-level social workers from KU to gain hands-on experience in the community. The RCP office is located in the same building as the RDA office, just up the stairs. The partnership has been in existence for 7 years, with 29 students having completed a practicum at the site.

Best wishes to Andrea in her new position, and may the RDA-RCP partnership continue to bear good fruit that benefits our community. ☑

ROSEDALE DEVELOPMENT ASSOCIATION

Working in partnership with residents, businesses, and institutions to build a strong and healthy community and to improve the quality of life for those who live, work, and play in Rosedale.

1403 Southwest Blvd.
Kansas City, KS 66103
Phone: (913) 677-5097
Fax: (913) 677-3437
www.rosedaleassociation.org
Monday-Friday, 9 a.m.-5 p.m.

Wendy Wilson, Executive Director
Linda Wright, Office Manager
Kelly Jander, Volunteer Coordinator
Joel Goering, MVS Volunteer
Board of Directors
www.rosedaleassociation.org/
who_board.htm

Newsletter design by Elizabeth Johnston,
Lizzardbrand Inc., www.lizzardbrand.com

Meet the new principal at Rosedale Middle School

On behalf of the Rosedale community, RDA welcomes Connie Horner, the new principal at Rosedale Middle School. Connie officially started at the school on July 24, and she has been tirelessly preparing for the school year ever since.

Connie brings a lot of energy and enthusiasm to her job. "I'm thrilled to be here," she says. She has a lot of ideas on how to create life-long learners at the school, including the development of a student service club that would volunteer in the community and partner with local businesses on a regular basis, an arts program that would provide a positive creative outlet for students, and an adult education program designed to assist the entire family, because children are more successful if they have the support and involvement of their parents and extended families.

Connie is bilingual (English and Spanish), which will be very helpful at Rosedale Middle, where Latino students make up about 45% of the total student population. "I have a real passion for the kids," she says. "I think it's critical to figure out how to meet the needs of kids with limited English skills."

Born and raised in Wichita, Kan., Connie was an assistant principal at a middle school in Wichita before coming to Rosedale. She also has been an "instructional coach" for teachers and was a middle and elementary school teacher. She is a "military wife" and has traveled extensively overseas. She also spent time in Mexico as a foreign language instructor.

We eagerly anticipate working with Connie this year and beyond. Education is a personal and social responsibility, and the community's participation is critical in making it a successful endeavor. RDA will continue its efforts to support the education of children in Rosedale and Kansas City, Kan., and our partnership with Rosedale Middle is a key part of those efforts. Welcome to the neighborhood, Connie.



Rosedale Middle School Open House

In the school courtyard
3600 Springfield St.
Thursday, Aug. 24
6:00-8:00 p.m.

Come enjoy hot dogs and drinks. Meet and talk with teachers and the new principal.

Open to the general public.

Your Board at work

The RDA Board of Directors has realigned and rejuvenated its committee structure this year, in an effort to become more efficient and productive. The Board has also adjusted its meeting schedule: instead of meeting once a month for an hour, the group is meeting every other month for an hour and a half. This is to provide more time for committees to get things done in between gatherings of the full Board, and to allow for more discussion during full Board meetings. Here is the scoop on each Board committee, along with their respective "to-do" lists for the year:

Community Services: Monitor and evaluate programs with special attention to youth and how we can help them achieve in school. **Tasks:** Review results of current programs and make recommendations for improvement. **Chair:** vacant

Finance: Oversee the financial health of RDA, including preparing the budget and reporting on finances. **Tasks:** Develop new policies for contracts and transactions; approve the annual audit; develop cash-flow projections; construct a metric to track financial issues. **Chair:** Todd Navrat

Fund Development: Decide how RDA can increase revenue; help the Board get involved in fundraising; increase business memberships. **Tasks:** Develop an annual giving program, utilizing tiers/levels of giving, major gifts, and direct mail solicitation. **Chair:** Stevie Reynolds

Nominating/Board Development: Present a single slate of nominees for officers, members at-large, and members of the nominating committee; ensure Board members are knowledgeable. **Tasks:** Review Board profile; solicit names of Board prospects; prepare slate of nominees; provide Board training and support. **Chair:** Phil Gardos

Real Estate: Develop land acquisition and development strategy. **Tasks:** Define redevelopment priorities and strategies with potential financial benefit for RDA; seek strategic alliances; more fully define current working relationships. **Chair:** Jerry Shechter

The Board would like to hear from you. Contact the office with your comments, suggestions, and ideas – and they will be forwarded to the appropriate committee. ☑

Stevie Reynolds, Board President

Rosedale History Quiz

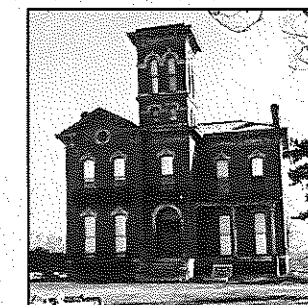
In each issue of *The Rosedalian*, there will be a historical photograph of a place in Rosedale along with an accompanying question. The first person to answer the question correctly will receive a prize. Submissions must be e-mailed to: rosedalehistoryquiz@yahoo.com or called in to the RDA office: (913) 677-5097. Please provide your name, address, and phone number.

Last month's photograph & question:

Question: Name this Rosedale landmark.

Answer: The landmark is Sauer Castle, which is on the National Register of Historic Places. It was built in 1871, on a site that is now 945 Shawnee Road. The Castle has fallen into disrepair in recent years, but RDA hopes that it may one day return to the splendor of its past.

Winner: Father Jerry Spencer of the Holy Name Faith Community, located at 1007 Southwest Blvd.

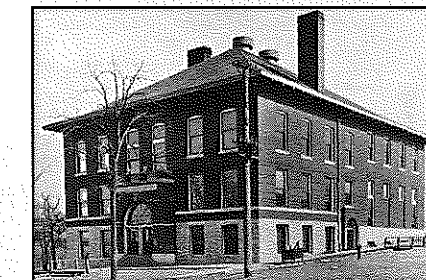


LARRY ROLLINS PHOTOS

This month's photograph & question:

Question: In recognition of the start of school this month, name this educational landmark from Rosedale's early days.

The answer will be provided next month.



Membership application

Annual business dues: \$100 ☑ Annual household dues: \$15

Name of business or name of household

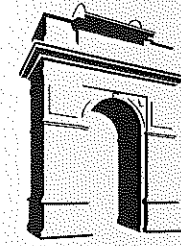
Address City State ZIP code

Contact person

Day phone Evening phone Fax

E-mail address

Please mail application, along with check made payable to:
Rosedale Development Association
1403 Southwest Blvd.
Kansas City, KS 66103



The Rosedalian

ROSEDALE DEVELOPMENT ASSOCIATION NEWSLETTER

Rosedale High School alumni to pay tribute to championship coach

On Friday, Sept. 15, more than 200 former Rosedale High School students will gather to recall how 50 years ago their basketball team won its only state championship in 1956. The students will honor the team's coach, William "Bill" Heitholt, and his wife Dorothy, with a catered dinner and tributes by former players, students, and fellow coaches. The event will be held in what is now the Rosedale Middle School gym (the high school was converted into the current-day middle school in 1974).

Although the Heitholt tribute dinner is sold out, seating for the after-dinner program is available at the door for \$10.

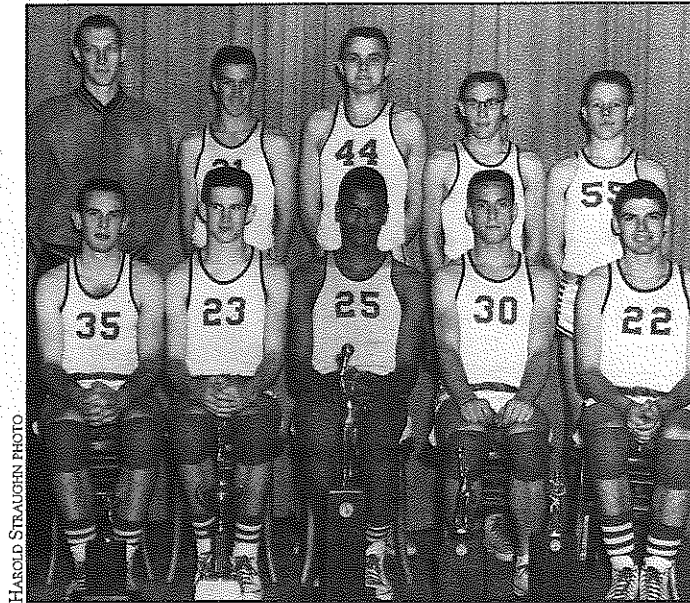
Heitholt was only 22 when he came to Rosedale to be its new basketball coach. The young coach was starting his first paying job after graduating from the University of Kansas in 1955. There he played on KU's 1952 national championship team and the U.S. Olympic team, alongside the likes of All-American Clyde Lovellette, and fellow guard Dean Smith, later a Hall of Fame coach at North Carolina.

Though inexperienced as a coach, Heitholt knew something about a winning attitude and giving your best. Those were sorely needed values at a school where the year before the basketball team lost 80% of its games.

Most of the starters were returning, with one new arrival courtesy of school desegregation,

6-foot 5-inch Robert Brown. Even though Brown had never played basketball, Heitholt gave him personal lessons during the fall. Proving to be a star scorer and rebounder, Brown made all the other players better with his enthusiasm and hard work.

Looking back over 50 years, many players and other students are quick to



HAROLD STRAUGHEN PHOTO

Rosedale's 1956 Class A State Champions

Front Row: Otto Scholl (captain), Bob Tague, Robert Brown, Dave (Bud) Woolery, Don Everson

Back Row: Coach Bill Heitholt, Frank Collins, Don Swope, Richard Briscoe, Scott Hinds

recall lifelong lessons they learned from Coach Heitholt along the way to their 25-1 championship season (the lone loss was to Ward, 48-46).

Team captain Otto Scholl, who became a successful home builder on California's coast, offers this tribute: "Coach Heitholt inspired me to become the first in my family to attend college, and to learn how to be a success in business and life."

Ron Huff, who went on to become an international pilot for major airlines, says, "To this day I believe the one overwhelming reason I was able to fulfill my career potential came from the lessons I learned from Coach Heitholt...His teaching of self-confidence, discipline and persistence has aided me in my becoming an instructor pilot and an international check pilot. I have tried to pass these qualities to my own children and to all my student pilots."

A centerpiece of the evening will be the reuniting of the five trophies won

along the way to the 1956 championship. Lost and neglected for decades, the trophies will be presented to the current first-year principal of Rosedale Middle School, Connie Horner.

Heitholt coached at Rosedale only four years. He spent most of his career in the St. Louis area, near his hometown of Quincy, Ill. He and Dorothy now live in Cuba, Mo.

NOTE: Rosedale's annual all-school picnic will be held on Sunday, Sept. 17, 11:00 a.m.-4:00 p.m., at the Knights of Columbus Park in Shawnee, Kan. (one mile west of I-435 and Shawnee Mission Pkwy.). The all-school picnic is open to all graduates (and spouses of graduates) of Rosedale High School. The luncheon will be catered by Rosedale Bar-B-Que for the price of \$17.00/person. Reservations must be made by Sept. 13 by calling or mailing a check to Pat Owsley: 8720 Goodman Dr. Overland Park, Kan. 66212; (913) 648-7288. ☐

Artists of Rosedale

James L. Needham

Paintings, sketches, and illustrations

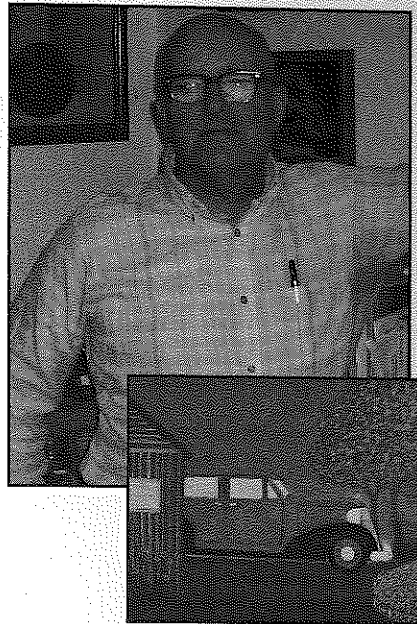
Address: 3920 Springfield St., Kansas City, Kan. 66103, Phone: (913) 262-8657, Home gallery, open by appointment.

This article is the third in a series about Rosedale artists, many of whom live and work in this community, either on a free-lance basis or through their own companies. The purpose of the series is to provide readers of The Rosedalian with a glimpse into a different kind of business than what has been typically featured on these pages in the past.

Like many artists, James (Jim) Needham would love for people to admire and buy his work – in fact, he encourages anyone to come to his home and tour his gallery of paintings, sketches, and illustrations. However, even if the work doesn't sell, he will continue to draw and paint. "I just do it because I enjoy it," he says.

Needham works almost exclusively with acrylic paint. Most of his paintings are "illustrative" – meaning they portray natural or popular subjects – but he occasionally creates abstract paintings, as well. His most common subjects are antique and classic cars, the old West, photo portraits, women, and rural/country scenes.

"Most of my ideas come from experience," says Needham, who grew up in tiny Mapleton, Kan. His paintings



JOEL COERING PHOTOS

One of Jim Needham's (pictured above) favorite subjects is classic and antique cars. One example of his work is the painting of the car (inset). To visit Needham's home gallery, call: (913) 262-8657.

of rural and country scenes were influenced by memories of his hometown and by stories that his dad would tell. Needham gets other artistic ideas from

books, movies, and pop culture.

In addition to paintings, Needham also produces sketches and collage pieces. Sometimes, he cuts out pictures from magazines and uses them to create illustrations. He also draws and paints portraits, either of real-life or imaginary people, and he does picture framing, as well. He says that he can frame pictures at a cheaper price than most conventional frame shops.

Over the years, Needham has displayed his work through the Wyandotte Arts Association, the Greater Kansas City Arts Association, and the Kansas City Artists Coalition. He also shows his work at local coffeehouses. "I'm interested in selling my work," he says. "I have very reasonable prices and I'm willing to negotiate...just give me a call."

Needham obtained a Bachelor's and Master's degree in Art Education from Pittsburg St. (Kan.) University. He moved to the Kansas City area in the early 1970s, and has lived in Rosedale since 1994. He has been a loyal member of RDA for 10 years. In addition to being an artist, he also works as a substitute teacher. ☐



1403 Southwest Blvd.
Kansas City, Kansas 66103

RETURN SERVICE REQUESTED

Non-Profit Org.
U.S. Postage
PAID
Permit No. 233
Kansas City, KS

Thank you volunteers

RDA hosted and supervised several volunteer groups during the summer. We are grateful for their hard work and dedication to serve our community. Volunteers play a vital role in building a stronger and healthier Rosedale, and we want to recognize their efforts. Here is a list of the groups and individuals who volunteered with RDA in the past few months:

- Saturday, July 29 – 26 students from Rockhurst University cleared brush, cut grass, painted, repaired the roof, and picked up trash at two locations in Rosedale. One location was at a home owned by a woman with Multiple Sclerosis (M.S.); the other location was at the entrance to the Mission Cliffs development area. Overall, the group contributed 78 cumulative hours of work.

- Thursday, Aug. 3 – As part of their introduction to the community, 17 first-year medical students from the University of Kansas Medical Center did yard work at a home owned by an elderly couple. They cleared brush, pulled weeds, cut grass, and trimmed hedges and branches. They donated 68 cumulative hours.

- Linda Wright, RDA's office manager, and her husband, John Wright, donated seven hours over the course of several days, working on the same home as the one that the students from Rockhurst worked on. They finished putting up fencing, repairing the roof, painting, and other tasks. Linda also personally supervised the Rockhurst and KUMC groups during their respective work days. Executive Director Windy Wilson assisted the group, as well.

If you would like to volunteer with RDA, call: (913) 677-5097. We will attempt to identify work projects that are meaningful and that meet each group and/or individual's unique talents and interests. ☎

Report dog fighting to the TIPS hotline: (913) 474-TIPS

- Dog fighting glorifies violence.
- Dog fighting teaches human participants not to care about the suffering of a living being.
- Dog fighting often involves weapons, drugs, gambling, and other illegal activities.
- Dog fighting is a felony.

If you suspect dog fighting in your area, protect our community and the dogs by calling the TIPS hotline: (913) 474-TIPS. Monetary rewards available for tips leading to an arrest.

2006-07 KU social work students



Six new students from the University of Kansas School of Social Welfare have joined the Rosedale Community Project, one of RDA's main partners, for the 2006-07 school year. The students come to the RCP to complete their field placement assignment for either a BSW or MSW degree. They facilitate and implement programs, work with youth, and help to assess the community's needs. Their vital contributions assist RDA in fulfilling its mission to the Rosedale community.

From left to right: Nichole Russell, Kerry Lowe, Donna Devine (supervisor), Kristi Kucirek, Jared Barton, Stacie Jesseph, and Danielle Bowen.

KU Med goes tobacco-free

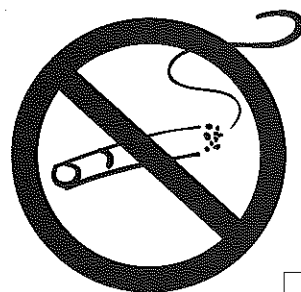
The campus of the University of Kansas Hospital and the University of Kansas Medical Center became tobacco-free on Sept. 1.

Previously, tobacco products were banned inside buildings on the shared campus, but the new regulation will extend the ban to outside areas, as well. The tobacco-free policy also will apply to KU MedWest in Shawnee and the new Westwood Campus of the hospital, which will house the new outpatient cancer center next year.

The two entities are jointly working on new smoking cessation initiatives to offer to staff members, as well as an education campaign for faculty, staff, employees, students, contractors, volunteers, patients and guests at all locations.

In a few locations nationally, tobacco-free programs have resulted in smokers

moving to nearby residential areas. Leaders of the University of Kansas Hospital and Medical Center do not want this to happen to its neighbors. If residents notice any problems with smokers from the campus moving into local neighborhoods, please call: (913) 588-1441. ☎



ROSEDALE DEVELOPMENT ASSOCIATION

Working in partnership with residents, businesses, and institutions to build a strong and healthy community and to improve the quality of life for those who live, work, and play in Rosedale.

1403 Southwest Blvd.
Kansas City, Kan. 66103
Phone: (913) 677-5097
Fax: (913) 677-3437
www.rosedaleassociation.org
Monday-Friday, 9 a.m.-5 p.m.

Wendy Wilson, Executive Director
Linda Wright, Office Manager
Joel Goering, Community Organizer
Board of Directors,
www.rosedaleassociation.org/
who_board.htm

Newsletter design by Elizabeth Johnston,
Lizzardbrand Inc., www.lizzardbrand.com

Sign up for the Christmas in October program

RDA and the University of Kansas Medical Center (KUMC) will once again partner on a Rosedale version of Christmas in October this year. Christmas in October is an annual Kansas City-based program that provides money and volunteers to make needed home repairs for elderly, disabled, and/or other low-income homeowners. This year's program will take place on Saturday, Oct. 14.

Christmas in October is an excellent way to maintain and improve the housing stock in our community and to tangibly serve people in need. To qualify, residents must own their own home and have their utilities turned on. In Rosedale, referrals for the program come from RDA staff, neighborhood groups, churches, U.G. codes officials, and the homeowners themselves. Representatives from RDA and KUMC evaluate each referral to determine eligibility.

RDA is now accepting referrals for this year's program. If you know of a deserving homeowner who would qualify, or if you would like to volunteer on Oct. 14, contact the RDA office: (913) 677-5097. ☎

Upcoming Events

September 19

RDA Board meeting. 1401 Southwest Blvd. 5:30-7:00 p.m.

September 20

Rosedale Leadership Council. 1403 Southwest Blvd. 5:30-6:30 p.m.

October 14

Christmas in October. See article above.

The Rosedale Youth Academy will begin its first session of the 2006-07 school year sometime in mid-September. The Academy meets on Wednesday afternoons and is open to 5th and 6th grade students. To register, call: (913) 677-2561.

The Rosedale Knights Chess Club (for 6th and 8th graders) will reconvene in late September. To register, call: (913) 677-5097.

Rosedale History Quiz

In each issue of The Rosedalian, there will be a historical photograph of a place in Rosedale along with an accompanying question. The first person to answer the question correctly will receive a prize. Submissions must be e-mailed to: rosedalehistoryquiz@yahoo.com or called in to the RDA office: (913) 677-5097. Please provide your name, address, and phone number.

Last month's photograph & question:

Question: In recognition of the start of school this month, name this educational landmark from Rosedale's early days.

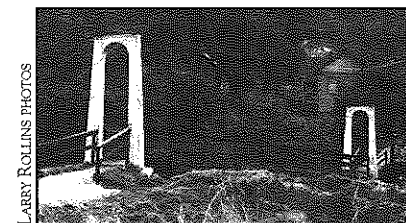


Answer: The landmark is the original building of Rosedale High School, built in 1906 and razed in 1927. The school district constructed a new building for the high school on the same spot as the original (on Mt. Marty, at what is now 36th and Springfield). The high school became the present-day Rosedale Middle School in 1974.

Winner: Bob O'Neal, long-time Rosedale resident and RHS graduate, Class of 1946.

This month's photograph & question:

Question: What is the object in the photo?



The answer will be provided next month.

Thank you

Thank you to Wachter Corporation and CEO Brad Botteron for donating 20 tickets to the Chiefs preseason game against the St. Louis Rams on Aug. 26. RDA awarded the tickets to seven high school-age youth who had successfully fulfilled all of the requirements for the Summer Youth Employment program. The youth were able to take 2-3 family members or close friends to the game, as well. We are grateful to companies like Wachter that support our community. Wachter is a Lenexa-based electrical and networking construction firm. ☎

Membership application

Annual business dues: \$100 ☎ Annual household dues: \$15

Name of business or name of household _____

Address _____ City _____ State _____ ZIP code _____

Contact person _____

Day phone _____ Evening phone _____ Fax _____

E-mail address _____

Please mail application, along with check made payable to:
Rosedale Development Association
1403 Southwest Blvd.
Kansas City, Kan. 66103