

Artists of Rosedale

Greg Summers

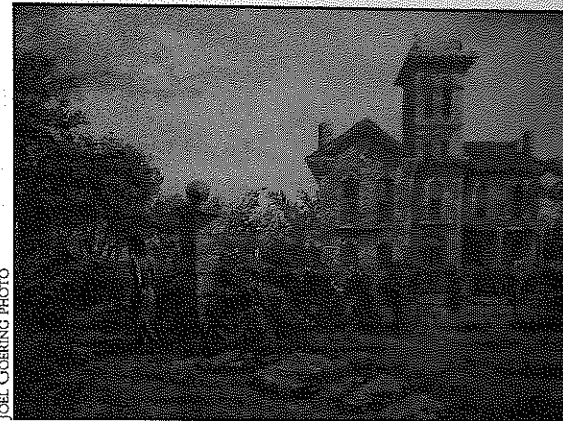
Paintings & drawings, Olympic Graphics International

Address: 1324 Southwest Blvd., Kansas City, Kan. 66103, Phone: (913) 722-2485, www.olympicgraphics.com

This article is the fourth in a series about Rosedale artists, many of whom live and work in this community, either on a free-lance basis or through their own companies. The purpose of the series is to provide readers of The Rosedalian with a glimpse into a different kind of business than what has been typically featured on these pages in the past.

Greg Summers saw a copy of the September issue of *The Rosedalian*, flipped to the "Rosedale History Quiz" section, and immediately recognized the object in the photo because he had played around it when he was a kid. Furthermore, as an artist, he had recently made a painting of the object. So, it is no surprise that Summers was the first person to identify the object – the Henning St. swinging bridge – and correctly answer the quiz question (see page 3).

Summers, who works for Olympic Graphics International (which is located catty-corner to the RDA office), considers himself an artist "on the side," although he employs some of his artist skills professionally for Olympic Graphics. Most of his art work consists



One of Summers' Rosedale paintings, "Sauer Castle," depicts the famous structure in all of its historical glory.

of oil-based painting, but he also draws with pencil and pen.

He has painted a spectacular version of the aforementioned swinging bridge, and he also has done an impressive rendition of Sauer Castle. Over the years, he has entered juried art shows at the Nelson-Atkins Museum, Crown Center, and UMKC. He received an honorable mention award at a show in Greenwich, N.Y., and last year, he submitted work to a contest at the Ernie Miller Nature Center in Olathe.

Though he doesn't paint for Olympic Graphics, Summers does sculptured engraving and embossing for Olympic on a wide variety of products, including wine labels, greeting cards, book covers, and yearbooks. Engraving and embossing requires artistic, as well as technical, skill, so he is able to utilize some of his artistic energies on-the-job.

Summers has worked for Olympic and its owner/president, Theo Tagtalianidis, for several years. Olympic has been in its current location in Rosedale for about five years. Summers and Tagtalianidis report that business is booming, with clients near (i.e. Hallmark) and far (Chile and Egypt).

Summers loves Rosedale history. He remembers playing in Turkey Creek as a kid, ice skating on it in the winter and catching crawdads in the summer. He was very pleased that his prize for correctly answering last month's history quiz was a copy of the Margaret Landis Rosedale history book, *The Winding Valley and the Craggy Hillside*. ☐

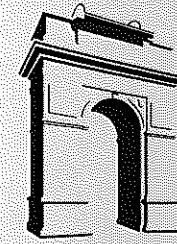
JOEL GOERING PHOTO



1403 Southwest Blvd.
Kansas City, Kansas 66103

RETURN SERVICE REQUESTED

Non-Profit Org.
U.S. Postage
PAID
Permit No. 233
Kansas City, KS



The Rosedalian

ROSEDALE DEVELOPMENT ASSOCIATION NEWSLETTER

Rosedale Optimist Club gives \$2,000 to RDA youth programs

The Optimist International service club's slogan is "bringing out the best in kids." Thanks to a large donation from the Rosedale Optimists, RDA will be able to "bring out the best in kids" in Rosedale through two of its primary youth-focused programs, Excellence in Education and the Rosedale Knights Chess Club.

"Optimists work with and for children all over the world," says Pat Brown, secretary of the Rosedale Optimists and former RDA Board member. "We try to do as much as we can for the youth in our area."

The \$2,000 donation is just the

most recent of the Optimists' contributions to RDA and the Rosedale community. Over the years, Brown estimates that the Rosedale club has given approximately \$10,000 to RDA. Most of the money has gone toward youth programs, in line with the Optimists' mission, however the Rosedale club has also contributed to the maintenance of the Rosedale Arch grounds. They have sponsored a bench in the park by the Arch, and they have given money for new flags for the Arch flagpole.

In addition, the Rosedale Optimists co-sponsor the annual Easter Egg Hunt in Whitmore Park, along with the

Rainbow Mennonite Church/Sharing Community in Rosedale.

RDA is grateful for the Optimists' commitment to the youth of Rosedale. The contribution to Excellence in Education and the Rosedale Knights Chess Club will allow those two programs to continue providing quality services. Excellence in Education recognizes local elementary and middle school children for success in the areas of academic performance, citizenship, and attendance. The Chess Club is an after-school enrichment activity for middle school children (see article below).

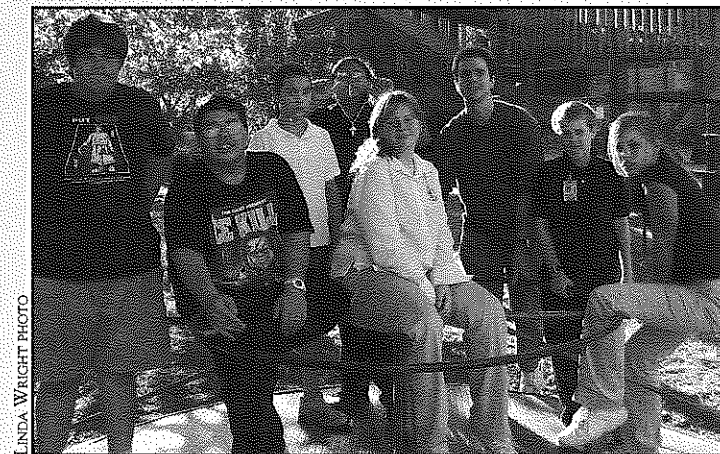
Thank you, Rosedale Optimists! ☐

Volunteer with the Rosedale Knights Chess Club

The Rosedale Knights have begun their third year in existence. However, more adult co-sponsors are needed to staff this important RDA program. If you are more than 18 years old, have an interest in teaching/mentoring with middle school-aged youth, and like the game of chess, then the Rosedale Knights Chess Club is for you. To volunteer, call the RDA office: (913) 677-5097.

The Knights met for the first time this school year on Oct. 5. The club will meet every Thursday after school from 3:30-6:00 p.m. at the Koch Community Center (1401 Southwest Blvd., next to RDA's office). The club is open to 6th-8th graders. Both boys and girls are welcome.

The club's lead sponsor is Joel Goering, RDA community organizer. He is responsible for overseeing the program and planning weekly activities. There are two additional adult sponsors who participate on a rotating basis, assisting with supervision, teaching, and having fun.



LINDA WRIGHT PHOTO

Members of the Rosedale Knights Chess Club strike a pose during their first meeting of the 2006-07 school year, Oct. 5. From left to right: Andrew Thomas, Kelly Grube, Derek Lysinger, Enrique Medina, Amber Germain, Joel Goering (sponsor), Chris Webb, and Allyssa Wonsmos.

However, more volunteer sponsors are needed. Those who volunteer will be inserted into the co-sponsor rotating schedule, and thus will not be required to attend each Thursday (but the invitation is open to attend every week, if one so desires).

Each meeting of the Knights consists of a lesson in which chess strategies and tactics are taught, and time is

provided for individual and team match play. The youth are also given the opportunity to complete homework, play board games and participate in outdoor recreation, i.e., basketball, kickball and four-square. Snacks and drinks are also provided each week.

Now's the time to join the Rosedale Knights Chess Club. Give us a call today! ☐

RMS and KU students team up to learn about journalism

Thanks to a KU professor and her class at the University of Kansas School of Journalism, students at Rosedale Middle School now have the opportunity to learn about journalism and improve their writing skills in an exciting after-school program, called "Excellence in Journalism Camp."

The after-school program was developed through Professor Peggy Kuhr's KU class, "Citizen Journalism and Community Work." The KU students – both undergraduate and graduate-level – plan and teach each after-school session, covering such diverse topics as: First Amendment rights; news, sports, and investigative reporting; television, print, and web media; and photography.

"Excellence in Journalism Camp" meets twice a week, from 3:00-4:45 p.m. 7th-8th graders attend on Tuesday afternoons, while 6th graders attend on Thursday afternoons. Currently, there are about 30 middle school students involved.

While the program is designed to expose the middle school students to the world of journalism and build their writing and reporting skills, the KU students also benefit from the program. They learn about working with children and using their expertise on behalf of the community. It is journalism beyond the classroom and into the real world.

The brainchild of the program is Professor Kuhr. About a year ago, she and Ann Weick, former dean of the KU

School of Social Welfare and former RDA Board member, were discussing ways that their two departments could join forces. After Weick mentioned that the School of Social Welfare has a practicum site for social work students in Rosedale (the Rosedale Community Project), Kuhr came up with the idea for the journalism class in the middle school.

"Everyone has a story," says Kuhr. "I thought, 'how can we help people tell their stories?' Thus, the after-school journalism program was born.

Future plans for the "Excellence in Journalism Camp" include taking a field trip to the *Kansas City Star* and creating and maintaining a school website with news stories. Kuhr would like to see the program extended beyond this semester, and perhaps become a regular fixture at RMS.

For more information, visit Professor Kuhr's on-line blog: www.crediblepress.org.

Good Neighbor Training

**Saturday, Nov. 4
8:00 a.m.-4:00 p.m.**

**Neighborhood Resource Center
(Indian Springs shopping center)**

Specifically designed for neighborhood groups, this FREE training will show you how various city departments operate and provide an opportunity for you to ask questions and interact with city staff.

Topics Include:

- Operation Brightside – Graffiti
- Health Department
- Building Inspection
- Rental Licensing
- Demolition & Abatement
- Animal Control
- Code Enforcement
- Blue Card Program

Class is limited to 25 people. Lunch provided.

To register, contact Liveable Neighborhoods: (913) 573-8737

Upcoming Events

October 14

Christmas in October (minor home repair program in Rosedale). Look for article in next month's *Rosedalian*.

October 18

Rosedale Leadership Council. 1403 Southwest Blvd. 5:30-6:30 p.m.

November 4

Good Neighbor Training. See above.

November 7

General Election Day.

Attention, RDA supporters!

Now you can make secure online donations to RDA through the Donor Edge website.

Giving to a good cause has never been so easy.

1. Visit RDA's website: www.rosedaleassociation.org.
2. Click on "Donate."
3. Click on the Donor Edge icon.
4. Look for the "Make Credit Card Donation" link.
5. Fill in the amount you want to give, along with other required information, and poof! You've contributed to the health and safety of the Rosedale community.

All donations are tax-deductible. We appreciate your partnership in building a safe and healthy community and improving Rosedale's quality of life.

DONOR | EDGE

Free smoke alarms to be distributed in Rosedale

Volunteers from the American Red Cross and other organizations from the Wyandotte County community, along with local neighbors, will be going door-to-door in certain Rosedale neighborhoods on Saturday, Oct. 28, offering to install free smoke alarms for any resident not having working alarms. Smoke alarms have been shown to cut the chances of dying in a home fire in half.

More volunteers are needed to assist with the distribution efforts. If you would like to participate, contact David Richardson at the American Red Cross (Wyandotte Chapter): (913) 321-6314. In addition, if you are a Rosedale resident and do not have a working smoke alarm, call the same number as above to ensure that a volunteer will come to your home on Oct. 28 to install the free alarms. ☎

A special thank you

Thank you to Carol Sappenfield Schimke and John Schimke (Rosedale High School Class of 1954) for donating a 1930 edition of the RHS school newspaper, called *The Rosedalian* (the RDA newsletter's namesake), to the RDA historical archives.

The 1930 newspaper was given to Carol by her dad, James Sappenfield (RHS Class of 1931). Carol presented the newspaper to RDA Executive Director Wendy Wilson at the Coach Heitholt tribute dinner and RHS alumni reunion on Sept. 15.

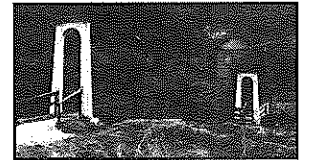
The newspaper will join the many other pieces of Rosedale history collected by RDA, including numerous old photographs, display boards, RHS yearbooks, and more. RDA recognizes the importance of preserving and understanding the community's history, as a way to frame the present and inspire the future. If you would like to contribute to RDA's archives and help preserve Rosedale history for future generations, contact the office: (913) 677-5097. ☎

Rosedale History Quiz

In each issue of *The Rosedalian*, there will be a historical photograph of a place in Rosedale along with an accompanying question. The first person to answer the question correctly will receive a prize. Submissions must be e-mailed to: rosedalehistoryquiz@yahoo.com or called in to the RDA office: (913) 677-5097. Please provide your name, address, and phone number.

Last month's photograph & question:

Question: What is the object in the photo?

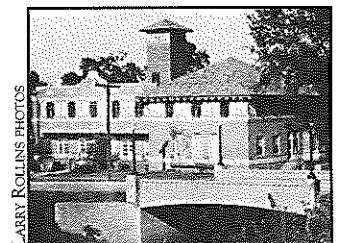


Answer: The Henning St. Suspension Bridge, sometimes called the "swinging bridge." The bridge served as a crossing point over Turkey Creek. Since the construction of I-35, the bridge has fallen into disrepair. Remnants of the structure can still be seen a short distance from the south side of the Southwest Blvd./Mission Rd. exit off I-35.

Winner: Greg Summers, artist for Olympic Graphics International (see "Artists of Rosedale" feature on back page).

This month's photograph & question:

Question: Name this therapeutic Rosedale business.



The answer will be provided next month.

Did you know?...

- RDA addressed approximately 4,900 calls for service or information in 2005, which averages to more than 400 calls per month.
- 536 volunteers came to serve in Rosedale through RDA last year, logging an incredible 2,530 hours of cumulative service. The volunteers came

from churches, schools, youth groups, local institutions and businesses, and elsewhere.

- RDA assisted 18 low-income, elderly, and/or disabled homeowners in Rosedale with minor home repairs in 2005, in an effort to improve housing quality and property values.

Membership application

Annual business dues: \$100 ☎ Annual household dues: \$15

Name of business or name of household

Address

City

State

ZIP code

Contact person

Day phone

Evening phone

Fax

E-mail address

Please mail application, along with check made payable to:
Rosedale Development Association
1403 Southwest Blvd.
Kansas City, Kan. 66103

ROSEDALE DEVELOPMENT ASSOCIATION

Working in partnership with residents, businesses, and institutions to build a strong and healthy community and to improve the quality of life for those who live, work, and play in Rosedale.

1403 Southwest Blvd.
Kansas City, Kan. 66103
Phone: (913) 677-5097
Fax: (913) 677-3437
www.rosedaleassociation.org
Monday-Friday, 9 a.m.-5 p.m.

Wendy Wilson, Executive Director
Linda Wright, Office Manager
Joel Goering, Community Organizer
Board of Directors
www.rosedaleassociation.org/who_board.htm

Newsletter design by Elizabeth Johnston,
Lizzardbrand Inc., www.lizzardbrand.com

*Artists of Rosedale***James Jukes**
Design & IllustrationAddress: 2610 W. 45th Ave., Kansas City, KS 66103, Phone: (913) 515-1430, www.jamesjukes.com, james@jamesjukes.com

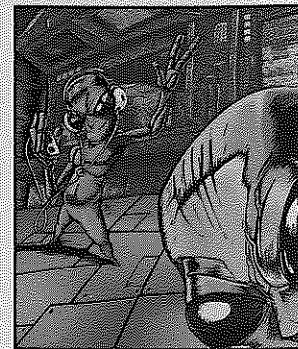
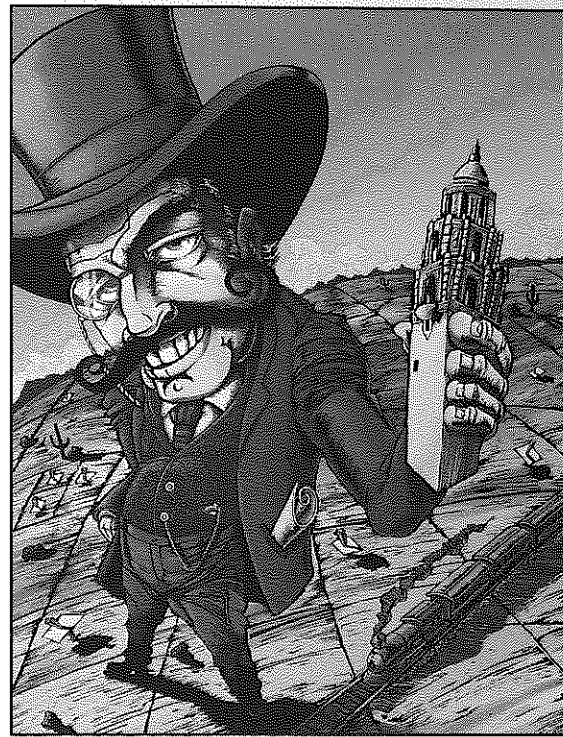
This article is the fifth in a series about Rosedale artists, many of whom live and work in this community, either on a free-lance basis or through their own companies. The purpose of the series is to provide readers of *The Rosedalian* with a glimpse into a different kind of business than what has been typically featured on these pages in the past.

If you're looking for a hip, cool design for your business or personal needs, you should check out the work of James Jukes.

Jukes is a freelance designer and illustrator, utilizing primarily digital software and traditional scratchboard as mediums. He uses a variety of computer software programs in creating his pieces. Much of his work is very colorful and eye-catching.

For samples, visit his website: www.jamesjukes.com.

Jukes has done work for such well-known companies as Marvel Comics and the locally-based newspaper, *The Pitch*. He has designed album covers, magazine covers, concert flyers, advertisements and other marketing and promotional materials. His clientele comes from all over the United States,



Here are two examples of Jukes' whimsical illustrations.

solving [to create an effective design and illustration]."

Jukes grew up southwest of the Kansas City area in Wellsville, Kan. He has lived in the Kansas City area for most of his life, and he has been in Rosedale for the past 14 years. He and his

from such faraway places as San Diego, Tucson, and Boston, to the closer-to-home locale of the Kansas City metropolitan area.

"I really enjoy what I do," says Jukes. "It's a different type of problem-

wife, Holly, enjoy Rosedale's centralized location and the fact that it is an older neighborhood.

For his "day job," Jukes works as a graphic designer for a local real estate company. ☞



1403 Southwest Blvd.
Kansas City, Kansas 66103

RETURN SERVICE REQUESTED

Non-Profit Org.
U.S. Postage
PAID
Permit No. 233
Kansas City, KS



The Rosedalian

ROSEDALE DEVELOPMENT ASSOCIATION NEWSLETTER

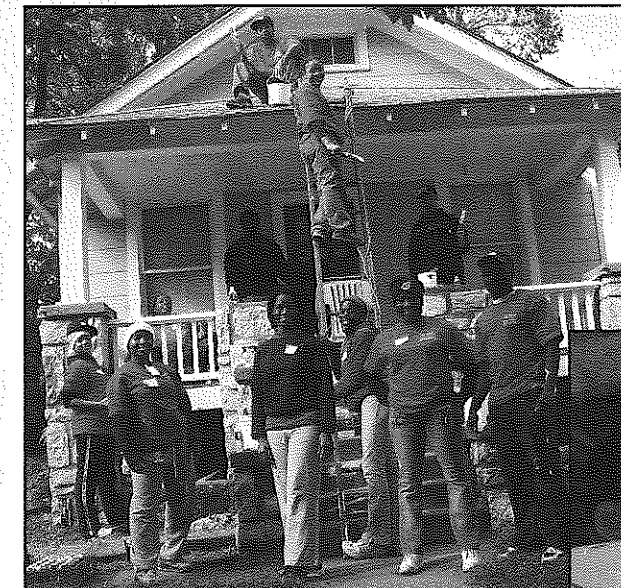
RDA and KUMC join together to rebuild houses and neighborhoods in Rosedale

On Saturday, Oct. 14, RDA and the University of Kansas Medical Center teamed up for Rosedale's version of Christmas in October, an annual minor home repair program serving low-income, elderly, disabled, or otherwise deserving residents within the Kansas City metropolitan region.

A total of 92 volunteers, including RDA staff, KUMC students and staff, local church members, neighborhood group leaders, and other people from the community, worked at 10 homes and 6 vacant lots in Rosedale. The volunteers contributed a cumulative total of 564 hours of service – a financial impact of \$9,328.56 for that volunteered time! At the homes and vacant lots, there were a variety of tasks completed, such as rebuilding steps and a porch, painting, weeding, trimming, cutting grass, raking leaves, replacing doors and windows, and many others.

Christmas in October is an excellent way to maintain and improve the housing quality in our local community and to tangibly serve our neighbors. To qualify, residents must own their home and have their utilities turned on. In Rosedale, referrals for the program come from RDA staff, neighborhood groups, churches, U.G. codes officials, and the homeowners themselves. Representatives from RDA and KUMC evaluate each home and determine eligibility, needs, and work assignments.

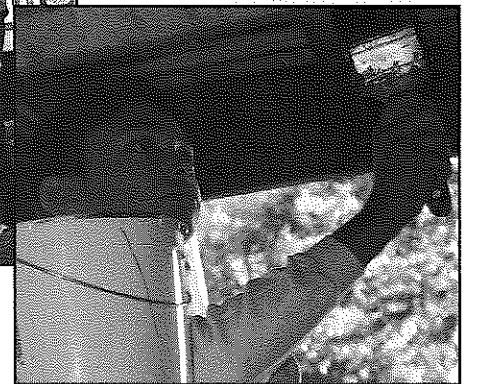
To view more pictures from the event, visit RDA's website: www.rosedaleassociation.org/christmasinoc-tobberphotos.htm. For more information on Christmas in October, visit the organization's website: www.christmasinoc-tobber.org. ☞



At right: An unidentified young person diligently paints part of a garage in the Shawnee Road neighborhood.

This year's Christmas in October project was a success in making needed improvements to homes in Rosedale.

At left: Student volunteers from the University of Kansas Medical Center take a break from their hard work on a house in the Spring Valley neighborhood.



Rosedale faith community celebrates Thanksgiving

The Rosedale Ministerial Alliance's annual Thanksgiving ecumenical worship service with the Rosedale community was held on Nov. 21, at the Rainbow Mennonite Church (1444 S.W. Blvd., across the street from the RDA office).

Pastors from several Rosedale churches participated in the service, along with choirs from Greystone Missionary Baptist Church, Rosedale Church of God-Holiness, and Rainbow Mennonite Church. Father Jerry Spencer of the Holy Name Catholic Faith Community gave a brief meditation and was honored by the Ministerial Alliance for his many years of service in Rosedale.

Attendees brought non-perishable foods and household products to donate to RDA's Feed-a-Family program (see page 2). A portion of the offering was desig-

nated by the Ministerial Alliance to the new Rosedale Freedom School, a 6-week summer educational enrichment program for 100 Rosedale youth in grades K-8 that will begin in June 2007. ☞

Nominations needed for at-large reps to the RDA Board

There are two at-large positions on the RDA Board of Directors that are filled annually. One represents the business community; the other represents the residential community. Nominations are now being accepted for these positions. Ballots will be mailed in the December issue of *The Rosedalian*. Dues-paying members of RDA are eligible to vote. The winners will serve 1-year terms beginning in January.

If you would like to nominate yourself or someone you know for either of the available positions, contact the RDA office by Dec. 1. ☞

Rosedale rallies around Dagwoods

In an effort to recognize and honor Ruby Morlan, beloved owner of Dagwoods diner on Southwest Blvd., several individuals and neighboring businesses recently donated their time and resources to remodel the interior of the diner.

"She's [Ruby] always doing things for other people," said Bette McGill, owner of Vital Signs (located just down the street from Dagwoods). "We decided to help her for a change."

Morlan has had difficulties lately. She lost both her husband and mother-in-law to cancer in the past several years. Finances have been tight, due heavily to medical bills for her husband and mother-in-law.

It became apparent to friends and family that they needed to do something; hence, the idea came to help Morlan by fixing and sprucing up her diner restaurant. The remodel work included: cleaning, painting, replacing the ceiling tiles, fixing the air conditioners, installing new tables and countertops, and decorating.

Volunteers for the project: Mike Hill and Shannon from R.E.W. Materials, Steve and Bette McGill from Vital Signs, Robbie from Napa Auto Parts, Craig May, John Wright, James Cross, Kevin Kile, Butch and Pat Stewart, Steve Castle, Dagwoods employees (Sherry, Faye, Bobby, Ceason, Sue, Monk, and George), and Ruby's family and friends.

Morlan has worked at Dagwoods since 1979. She bought the business in 1994, and has owned and operated it ever since. Every year, she organizes and hosts a holiday dinner for local children and families who are down on their luck and need an extra "hand-up" during the holiday season. In addition to the dinner, children receive a gift from Santa Claus and families receive clothing and other household items. This year's event will be held on Dec. 4, 5:00-9:00 p.m.

"Ruby sees it [the holiday dinner] as a way to help Rosedale, to help our own neighborhood," said McGill.

For more information on the Dagwoods holiday dinner, call: (913) 677-0747. ☎

Upcoming Events

November 15
Rosedale Leadership Council. 1403 Southwest Blvd. 5:30-6:30 p.m.

November 21
RDA Board meeting. 1401 Southwest Blvd. 5:30-7:00 p.m.

Rosedale community-wide Thanksgiving worship service, sponsored by the Rosedale Ministerial Alliance. 1444 Southwest Blvd. 7:00 p.m.

November 23-24
Thanksgiving holidays. RDA office closed.

December 4
Dagwoods holiday dinner. 1117 Southwest Blvd., 5:00-9:00 p.m. See article at left.

December 15
Feed-a-Family donations due. See article below.

Is your neighbor driving you crazy?

Do you have problems of excessive noise, animal control, broken communication, disputed property lines, and/or poor upkeep of property in your neighborhood?

Are you having difficulty resolving these issues?

If so, then contact:

Rosedale Conflict Resolution Center

We'll help you resolve your problem. (913) 677-5097

Ask for Joel Goering.



ROSEDALE CONFLICT RESOLUTION CENTER

Get prepared for winter and save on home energy and utility bills

RDA has ordered more home winterization kits from the Kansas Warm Homes Project. The kits, which are free to those who qualify (low- to moderate-income residents, as well as those on fixed incomes), will help homeowners save on heating and other energy bills this winter. RDA will distribute the kits on a first-come, first-serve basis.

To qualify for the program, individuals and families must fall below 150% of the federal poverty level (\$14,355 for an individual, \$29,025 for a family of 4). The kits contain a variety of tools and materials to improve insulation in older and substandard homes, including: plastic sheeting to cover windows and doors, rope and acrylic caulking to seal cracks, and switch plate insulators to help stop cold-air drafts. The kits also contain compact fluorescent light bulbs and an energy-saving tips guide.

Homeowners may install the kits themselves or they may call upon volunteers at the United Way of Wyandotte County for assistance. If you or someone you know needs a home winterization kit and meets the income guidelines, contact RDA: (913) 677-5097. ☎

QRDC?KD CDUENQDMS ?RRNBH?SNM

Working in partnership with residents, businesses, and institutions to build a strong and healthy community and to improve the quality of life for those who live, work, and play in Rosedale.

1403 Southwest Blvd.
Kansas City, Kan. 66103
Phone: (913) 677-5097
Fax: (913) 677-3437
www.rosedaleassociation.org
Monday-Friday, 9 a.m.-5 p.m.

Wendy Wilson, Executive Director
Linda Wright, Office Manager
Joel Goering, Community Organizer
Board of Directors,
www.rosedaleassociation.org/
who_board.htm

Newsletter design by Elizabeth Johnston, Lizzardbrand Inc.,
www.lizzardbrand.com

Feed-a-Family program returns to Rosedale

For the 21st year, Rosedale Development Association and the University of Kansas Fraternal Order of Police Lodge No. 37 are teaming up with the community to provide holiday gift baskets for Rosedale families and senior citizens in need.

There are several ways you can participate:

- Donate non-perishable food items and household products (see list below).
- Make a cash donation.
- Sponsor a complete basket for a family by purchasing all of the items listed below, plus a sturdy laundry basket.
- Volunteer to assist with sorting on Dec. 16 or delivery on Dec. 21.

Here is the list of non-perishable food items and household products that may be donated:

- canned vegetables and fruit
- stuffing mix
- rice/pasta
- cranberry sauce
- soup
- corn bread/muffin mix
- pinto/red/black beans
- canned meat
- flour & sugar
- salt & pepper



Rosedale History Quiz

In each issue of The Rosedalian, there will be a historical photograph of a place in Rosedale along with an accompanying question. The first person to answer the question correctly will receive a prize. Submissions must be e-mailed to: rosedalehistoryquiz@yahoo.com or called in to the RDA office: (913) 677-5097. Please provide your name, address, and phone number.

Last month's photograph & question:

Question: Name this therapeutic Rosedale business.

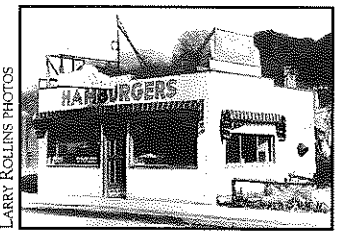
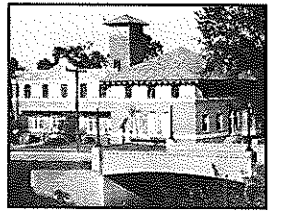
Answer: The Rosedale Mineral Baths and Hotel, often called the "Rosedale Bathhouse," provided a relaxing atmosphere and natural healing experience for locals and out-of-town visitors alike. Located immediately south of present-day I-35 along Turkey Creek, the Bathhouse offered mineral baths and hotel rooms for many years before closing.

Winner: Mary Lou Yulich. Congratulations!

This month's photograph & question:

Question: Name this famous, long-time Rosedale dining establishment. Hint: It is mentioned somewhere else in this month's issue of *The Rosedalian*.

The answer will be provided next month.



LARRY ROLLINS PHOTOS

Rosedale Obituaries

Dorothy Adkins, life-long Rosedale resident, passed away on Oct. 21. She was 83.

Adkins was a graduate of Rosedale High School. She was a secretary-bookkeeper for more than 50 years. A loyal and committed Rosedalian, she served on the RDA Board of Directors and volunteered with the organization in later years. She also served as president of the Rosedale High School PTA.

Lloyd H. Strong, 89, died on Oct. 27. He was a long-time Rosedalian.

Strong was born Jan. 4, 1917 in Malcom, Iowa. He leaves behind six children, including current and former Rosedale residents.

Rose M. Skaggs, of the Rosedale district of Kansas City, Kan., passed away on Nov. 4. She was 77.

Skaggs worked as a secretary for Sigin Office Supply for 20 years, retiring in 1975. She was married to James L. Skaggs. Rose and James were long-time members of RDA.

Membership application

Annual business dues: \$100 ☎ Annual household dues: \$15

Name of business or name of household			
Address	City	State	ZIP code
Contact person			
Day phone	Evening phone	Fax	
E-mail address			

Please mail application, along with check made payable to:
Rosedale Development Association
1403 Southwest Blvd.
Kansas City, Kan. 66103