

Business Feature

Jaywalkers Sports Bar & Grill

Address: 3916 Rainbow Blvd., Kansas City, Kan. 66103, Phone: (913) 671-PHOG (7464), Hours of operation: Open 'til midnight, Sun.-Thurs.; 'til 2:00 a.m. Fri.-Sat.

One of RDA's newest business members is Jaywalkers Sports Bar and Grill, located directly across from KU Med Center at the busy corner of 39th Ave. and Rainbow Blvd. If you want a fun, cool place to watch the big game, have a night out on the town, or simply just to unwind after a hard day's work, Jaywalkers is the place for you.

Jaywalkers, which opened in Rosedale last September, offers a wide variety of food and drink items, including their popular \$7 all-you-can-eat lunch buffet (\$5 on Wednesday's) and their famous "Build-a-Burger," "Build-a-Dog," and Signature Pretzel Bun. The menu includes an array of tasty appetizers, sandwiches, and salads, as well. For those not inclined to eat meat, Jaywalkers has vegetarian options, such as the wholesome Black Bean Burger.

There are 18 different beers on tap, along with bottled beer and liquor. You can even sample the 1919 Draft Root Beer. Each day, there is a different drink and food discount special for your enjoyment.

"We thought [the 39th and Rainbow location] would be a good spot for our business," says Matt Jones, co-



MATT JONES PHOTOS

owner of Jaywalkers along with three of his friends. "We're close to KU Med and we like the neighborhood."

As a sports bar, Jaywalkers has 11 flat-screen TVs spread around the establishment, to ensure that everyone

has a good view of the game. While the owners are somewhat partial to the University of Kansas (all four are KU graduates), fans of other schools are welcome, as well. Jaywalkers has a distinct Big 12 Conference theme, with flags from the 12 conference schools adorning the walls and menu items named after many of the schools.

Obviously, the bar and grill's name is a play on the University of Kansas's mascot, the Jayhawk, and its close proximity to the KU Med Center. In fact, since Jaywalkers is located directly across the street from KU Med Center, people can "jaywalk" across Rainbow Blvd. to get to the bar and grill (although this is not recommended; there are pedestrian crosswalks nearby).

Jones and his co-owners make up the Roadhouse Group, a business partnership that also owns the Dark Horse Tavern and Torre's Pizzeria in Westport.

"We take a lot of pride in our business," says Jones. "We offer a clean, safe environment and we're very active in the community. I would encourage anyone to come and check us out." ☐

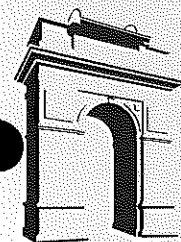


1403 Southwest Blvd.  
Kansas City, Kansas 66103

RETURN SERVICE REQUESTED

Donna Devine  
7011 W. 69th Terrace  
Overland Park, KS 66204-1312

Non-Profit Org.  
U.S. Postage  
PAID  
Permit No. 233  
Kansas City, KS



The Rosedalian

ROSEDALE DEVELOPMENT ASSOCIATION NEWSLETTER

Hopes and dreams for Rosedale

A look back at 2006 brings thoughts of our successes, but also of losses. Last year, a number of our long-time residents and members passed away. These were individuals who helped to enrich our community with their lives. It has made me more aware of the brevity and fragility of life. I feel the need to spend more time enjoying friends and family and creating memories. If we are lucky, we can even leave a legacy of our own.

RDA was successful in continuing to meet our financial challenges without going into debt thanks to many gracious donors and volunteers. We served 25 families with our Feed-a-Family program – more than ever before. We completed 35 projects through our Minor Home Repair and clean-up program to assist low-income and elderly homeowners. Calls for service or information averaged 350 to 400 per month. Families and youth continued to receive individual services through RDA's on-site programs and in-school services supported by RDA.

As I gaze ahead to 2007, I am energized by new ideas, new board members, new opportunities and a long holiday break from the office. We have new involved residents, new businesses, new housing and a reputation that "good things are happening in Rosedale"...a trend I hope will continue in 2007. Housing values are up, crime is down, more volunteers are willing to participate in a variety of ways, and more area institutions are truly partnering to provide better or new community services.

My hope for this year is that RDA will not only continue our established services but also move into some new areas. Our goals are to bolster the physical identity of Rosedale through banners and marketing, investigate the possibility of

a gateway marker at 7th St. and Southwest Blvd., and find ways to better link together as a geographic area. In addition, we will strengthen youth and families at Rosedale Middle School by supporting the development of a comprehensive after-school program. RDA is committed to identifying funding sources for a two-year pilot program that would place a full-time extended-day coordinator at the school.

Funding remains a challenge as we search for new ways to generate earned income, to allow us to continue provid-

ing valuable resources and services here in Rosedale. RDA is striving to find better ways to connect with the 63% of area residents who now live in rental housing, and we are also seeking to connect and build bridges with the rapidly growing Spanish-speaking population.

Please join with us in 2007 to make great things happen in Rosedale. I hope our newsletter and website help you to stay connected with our community. Blessings! ☐

— Wendy Wilson, Executive Director

Volunteer brochure wins Philly Award

RDA garnered a first place design award from the Council on Philanthropy and the Nonprofit Communications Network in Kansas City, Mo. on Dec. 8, 2006.

The first place "Philly Award" was for RDA's volunteer brochure produced by a Rosedale design firm, Lizzardbrand Inc. Kelly Jander, RDA's former Volunteer Coordinator, also played a critical role in producing the brochure.

Out of 141 entrants, first and second place awards were only given in seven categories. RDA's winning entry was in the "Informational Brochures" category for non-profit organizations with less than a \$1 million annual budget.

"The volunteer brochure's professional design reflects our commitment to provide a quality experience for our volunteers, as they work to

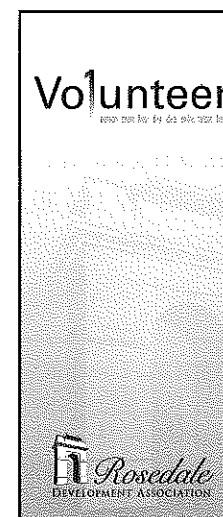
address community needs in Rosedale," said Wendy Wilson, RDA's Executive Director.

There are lots of opportunities to get involved with RDA and the

Rosedale community. Volunteers and donations are always welcome. If interested, call: (913) 677-5097.

"This award means more to me than any I've won in the past because the design goal was to help people in our neighborhood," said Elizabeth Johnston, president of Lizzardbrand Inc. "I hope that this exposure within the non-profit community will benefit RDA in the future."

In addition to the volunteer brochure, Johnston also designed the logo branding for RDA, created signage and other publications, and produces their monthly newsletter. ☐



## Rosedale reaches out for annual Feed-a-Family program

For the 21st year, RDA and the University of Kansas Fraternal Order of Police Lodge No. 37 teamed up with the community to provide holiday gift baskets for Rosedale families and senior citizens in need. This year, 25 families (86 total persons) were served by the program.

The outpouring of support from the community this year was significant. Church groups, businesses, and individual residents came through with a record number of donations.

Throughout November and December, RDA collected donations of non-perishable food items, household products, children's toys, and cash (which was then used to purchase meats, eggs, margarine, and milk).

Beneficiaries for the program were referred by local schools, churches, and neighborhood groups. RDA staff then screened the referrals and determined the specific needs of each family.

On Dec. 16, volunteers from the Church of Jesus Christ of Latter Day Saints and Rainbow Mennonite Church joined local residents and RDA staff members in sorting all of the donated items into individual baskets to be delivered to the families.

Dec. 21 was delivery and pick-up day. Many of the families came to pick up their gift basket at the RDA office. For those that were unable to get out of their homes, especially senior citizens, RDA staff provided door-to-door delivery.

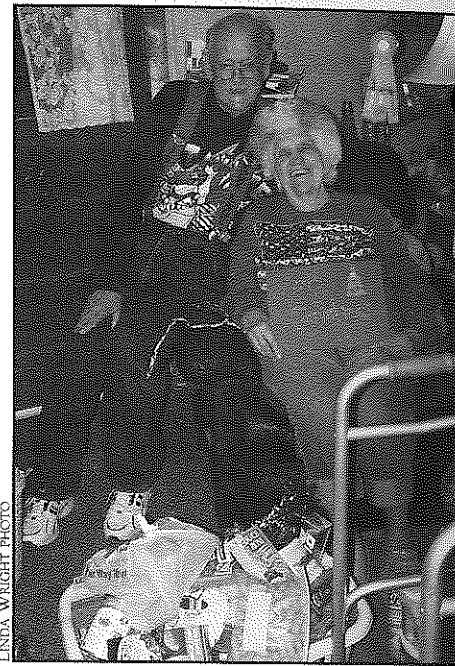
Thank you, thank you so much to the community for your generosity and compassion this year in making it possible for RDA to assist 25 families and provide them with needed groceries, household items, and toys for children for Christmas and the holiday season.

The families wish to express their gratitude, as well.

The following persons and organizations contributed to the program:

- Kathleen Brock
- Doris Brown & Carolyn Crocker
- Jan Buerge (and group)
- Joe & Marlene Clevenger
- Virginia Daily
- Helen Edwards
- Terri Gaeddert (and group)
- Greg Gibbson (Hartz Properties)
- Dennis & Annie Jones (and group)
- Shay Lewis
- Pat Milburn

- Dan Millam (Millam Ditching)
- Mary Patrick
- Darin Penner (and group)
- Pat Pettey
- Janette Strong
- Jim Turley
- Ruth Turner
- Bonnie Welty (and group)
- John Wright
- Anonymous UPS worker
- Fraternal Order of Police Lodge #37
- Fraternal Order of Police Lodge #4
- Church of Jesus Christ of Latter Day Saints
- Holy Name Catholic Faith Community
- Rainbow Mennonite Church
- 3 Axis
- Haun Potato
- KC Cars 4 Less
- KC Winnelson
- Wal-Mart
- KU Medical Center-Alumni and Community Relations



**Godfrey and Mary Leonard, beneficiaries of Rosedale's Feed-a-Family program, are all smiles after receiving their holiday gift basket last month.**

## RDA Board of Directors welcomes four new members

At their December meeting, the Board of Directors approved the slate of Board nominations for 2007, recommended by the Nominating Committee. The slate included two new members and renewals of terms for several returning members. The community also voted in December on two new members to represent the business and residential constituencies. Check out the biographies of the four new members below.

For a complete list of current Board members, visit: [www.rosedaleassociation.org/who\\_board.htm](http://www.rosedaleassociation.org/who_board.htm).

**Ryan Carpenter** and his wife moved to the Rosedale community last June. Ryan was formerly the staff attorney for the Unified Government Neighborhood Resource Center (NRC). In that capacity, he reviewed and recommended ordinances and ordinance changes, managed and oversaw prosecution of environmental codes court, filed all nuisance complaints for the NRC, and assisted in training for certification of field inspectors. Ryan now works for the city of Lenexa, Kan. He will represent the residential community.

**Brian Hedrick** is the Chief Operating Officer and General Manager for Dean Realty Co., a major commercial real estate developer based in Kansas City, Mo. The company

owns property in Rosedale, including the Cambridge Business Park immediately off I-35 at the Cambridge Circle exit. Brian has worked for Dean Realty for 18 years. He will represent the business community.

**Mary Heinrich** is a managing supervisor for Fleishman-Hillard, a leading global communications company. She has extensive experience in public relations and is looking forward to letting others know about the good things happening in Rosedale. Before going to Fleishman-Hillard, she worked for the KU Medical Center in Alumni and Community Relations. Mary has volunteered with Rosedale's version of Christmas in October and with YouthFriends at Rosedale Middle School. She is a Rosedale resident.

**Janet Leigh**, a KCK native, is a reading/language arts teacher at Rosedale Middle School. She passionately believes in the importance of education and in building connections in the community so that children can succeed. Janet loves teaching so much that she volunteers her time with the "Super Saturdays" youth literacy program at Rosedale Congregational Church. She has been at RMS since 2001. Prior to entering the teaching profession, Janet worked for the Kansas City, Mo. Police Department for 11 years. ☎

## Senior citizen utility tax rebate expanded

It's time once again for the popular Senior Citizen Utility Tax Rebate Program. The program offers senior citizens a rebate on a portion of the amount paid for utilities during 2006. And for 2007, Mayor Joe Reardon and the Unified Government Commission have expanded the program, meaning more seniors will be eligible and rebates will be larger.

The rebate program runs January 2, 2007 through March 30, 2007. Persons applying must be 65 years of age during the entire year of 2006, live in the city of Kansas City, Kansas, and their total income must not exceed \$25,000. The maximum refund is \$300.00.

Applications will be taken at the Municipal Office Building East, 701 N. 7th St., Room 323, Kansas City, Kansas, in the Unified Government Clerk's Office, Monday-Friday, 8:00 a.m. - 4:30 p.m.

Eligible persons should bring all gas, telephone, and BPU bills paid during 2006; proof of income, Social Security statements, interest statements, and Social Security number. Printouts from the utility companies will be accepted. Please call the Unified Government Clerk's Office at 573-5260 if you have questions. ☎

### ROSEDALE DEVELOPMENT ASSOCIATION

Working in partnership with residents, businesses, and institutions to build a strong and healthy community and to improve the quality of life for those who live, work, and play in Rosedale.

1403 Southwest Blvd.  
Kansas City, Kan. 66103  
Phone: (913) 677-5097  
Fax: (913) 677-3437  
[www.rosedaleassociation.org](http://www.rosedaleassociation.org)  
Monday-Friday, 9 a.m.-5 p.m.

**Wendy Wilson**, Executive Director  
**Linda Wright**, Office Manager  
**Joel Goering**, Community Organizer  
**Board of Directors**,  
[www.rosedaleassociation.org/who\\_board.htm](http://www.rosedaleassociation.org/who_board.htm)

Newsletter design by Elizabeth Johnston, Lizzardbrand Inc.,  
[www.lizzardbrand.com](http://www.lizzardbrand.com)

## Rosedale History Quiz

In each issue of The Rosedalian, there will be a historical photograph of a place in Rosedale along with an accompanying question. The first person to answer the question correctly will receive a prize. Submissions must be e-mailed to: [rosedalehistoryquiz@yahoo.com](mailto:rosedalehistoryquiz@yahoo.com) or called in to the RDA office: (913) 677-5097. Please provide your name, address, and phone number.

### Last month's photograph & question:

**Question:** What was this building's original use? *Hint:* It was used for more than one purpose.

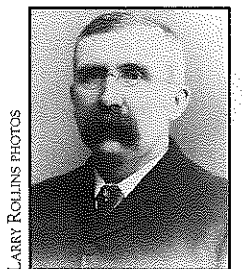
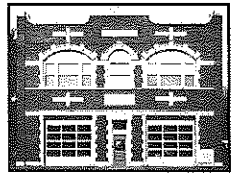
**Answer:** The building is the former Rosedale City Hall, Fire Station #1, and Jail, built in 1912. After Rosedale was annexed into Kansas City, Kan. in 1922, the building became Fire Station #10 for the KCK Fire Department. In recent years, the building has been converted into a luxury loft.

**Winner:** Helen Humphreys

### This month's photograph & question:

**Question:** Who is this man and what is his distinction in early Rosedale history?

The answer will be provided next month.



## Congratulations...

...to **Darcy Nichols-Curtiss**, University of Kansas Police Department (KU Medical Center), who was recently promoted to the rank of Sergeant. Darcy is a long-time Rosedale resident, so we are especially proud of her. Over the years, she has volunteered with the Hilltop neighborhood group and the Excellence in Education program. Way to go, Darcy!

Also, congratulations to **James Picker**, who was promoted to Sergeant, and **Kevin Faust**, who was promoted to Captain.

### Upcoming Events

**January 16** - RDA Board meeting. 1401 Southwest Blvd. 5:30-7:00 p.m.

**January 17** - Rosedale Leadership Council meeting. 1403 Southwest Blvd. 5:30-6:30 p.m.

**January 25** - Liveable Neighborhoods meeting. U.G. Neighborhood Resource Center. 4601 State Ave. 8:30 a.m.

**January 29** - Rosedale Ministerial Alliance meeting. Landon Center on Aging. 36th and Rainbow Blvd. 6:00 p.m.

## Membership application

Annual business dues: \$100 ☎ Annual household dues: \$15

Name of business or name of household

Address City State ZIP code

Contact person

Day phone Evening phone Fax

E-mail address

Please mail application, along with check made payable to:  
Rosedale Development Association  
1403 Southwest Blvd.  
Kansas City, Kan. 66103