

Summer Youth Employment Wrap-Up

Congratulations to the youth and businesses who participated in this year's Summer Youth Employment (SYE) program. A special thank you to our business partners; without them, the program would not be possible. Here's to a job well done!

The SYE program is one of RDA's most effective social programs. Now in its 9th year, it provides local high school-age young people with an op-

portunity to work in a paid job for 6-8 weeks during the summer. The youth work at local businesses in a variety of fields, including: health care, banking, design and fabrication, custodial services, grocery and food service, and clothing retail.

The youth are required to attend a series of job skills training sessions at the beginning of the summer to prepare them for the workforce; for many of them, it is their first job. They are paid through a grant from the Board of Public Utilities (BPU). Thus, each business does not pay

the youth assigned to them, but is responsible for supervising their tasks.

This summer, 14 youth were hired into the program; 11 of them completed their full term of employment. 55 youth inquired or applied to the program, a sign of its popularity and competitiveness. The youth worked approximately 2,000 cumulative hours during the summer...that's 2,000 hours of labor for businesses in the community!

The following is a list of participating businesses and supervisors, along with the youth who completed the program:

ROSEDALE DEVELOPMENT ASSOCIATION

Working in partnership with residents, businesses, and institutions to build a strong and healthy community and to improve the quality of life for those who live, work, and play in Rosedale.

1403 Southwest Blvd.
Kansas City, Kan. 66103
Phone: (913) 677-5097
Fax: (913) 677-3437

www.rosedaleassociation.org
Monday-Friday, 9 a.m.-5 p.m.

Wendy Wilson, Executive Director
Linda Wright, Office Manager
Joel Goering, Community Organizer

Board of Directors,
www.rosedaleassociation.org/
who_board.htm

Newsletter design by Elizabeth Johnston, Lizzardbrand Inc.,
www.lizzardbrand.com

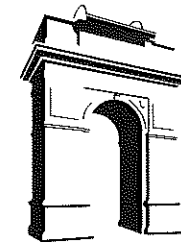
Business	Supervisor	Youth
KU Hospital	Marilyn Turnbull	Victor Gonzalez Taylor Easton
KU Hospital KU Medical Center	Randall Reed Toni Thunderbird	Alicia Carson Ashley Watson Valerie Warren
RMC Freedom School	Joel Goering	Courtney Graham Christopher Richard
Rosedale Middle School	Leslie Jenkins	Larry Denney Jason Trober
SW Blvd. Family Health Care	Kevin Dennis	Carla Morales
Vital Signs	Bette McGill	Ilham Abuanga
Westwood Apple Market	Alan Wiest	Rafael Viera
Hair Fix	Janeen Walker Sandy Ziolo	*Youth did not finish

Non-Profit Org.
U.S. Postage
PAID
Permit No. 233
Kansas City, KS



1403 Southwest Blvd.
Kansas City, Kansas 66103

RETURN SERVICE REQUESTED



The Rosedalian

ROSEDALE DEVELOPMENT ASSOCIATION NEWSLETTER

Funding continued for Turkey Creek flood control project, thanks to community

Due to the efforts of RDA, residents, businesses and the Turkey Creek Stakeholders from both sides of the state line, the Unified Government (U.G.) Board of Commissioners on August 2 voted to continue funding its portion of the \$92 million Turkey Creek flood control project. Once completed, the project will provide essential protection for residents and businesses along the Turkey Creek corridor, including along Southwest Blvd. and Merriam Lane in Rosedale.

The flood control project is being paid for through a partnership between Kansas City, Kan. (U.G.), Kansas City, Mo., and the U.S. Army Corps of Engineers. The Unified Government's contribution to the project is slated to be \$12 million over the next five to seven years. Kansas City, Mo. is scheduled to provide \$23 million and the U.S. Army Corps of Engineers is scheduled to provide \$57 million. The vast majority of improvements and repairs are being completed in Rosedale.

The commitment of the U.G. to the project had come into question in the weeks leading up to the August 2 vote. At least two Commissioners had expressed reservations about the significant cost to the U.G. to pay for the project and had requested the project be put on hold. This action would have seriously jeopardized federal funding of the project.

However, residents and businesses in Rosedale and elsewhere rallied around the project and called for the Commission to uphold its commitments and support continued funding. Members of the Turkey Creek Stakeholders – an ad-hoc coalition of businesses, local city staffers, state and federal officials, and railroad representatives – contacted the Commissioners and wrote letters to Mayor Joe Reardon to urge support for the project.

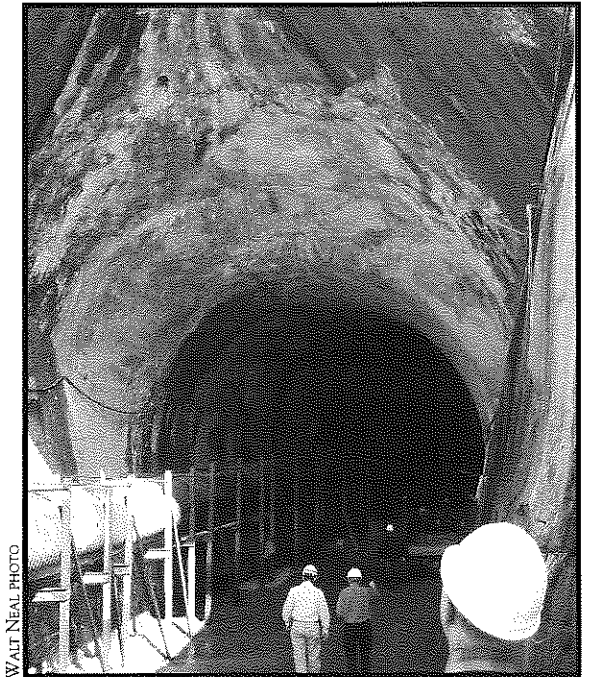
At a July 30 public hearing before

the Commission, several business owners and residents from the Turkey Creek corridor in Rosedale told the Commissioners that the flood control efforts are necessary to protect their livelihoods and ensure a thriving economic future for the area.

RDA Executive Director Wendy Wilson also spoke at the July 30 meeting, reminding the Commissioners that 37 businesses along the Turkey Creek corridor in Rosedale continue to thrive and provide tax dollars to the U.G. despite a long history of flooding from the creek. These businesses have endured with the hope and promise of a flood control project that would significantly reduce future flooding. They contribute more than \$1.3 million per year in property taxes (all 37 businesses) and sales taxes (from 6 businesses only) to the Unified Government. Thus, completion of the flood control project is critically important to not only these businesses, but to all of Rosedale and Wyandotte County.

Although the Commissioners approved the continued funding for the 2008 budget year, some of them, including the Mayor, said they will be looking for alternative funding sources for the project in the future. Formation of either a Drainage District or Benefit District was suggested. Either of these two methods would create an additional tax on area businesses that have seen their taxes increase an average of 9% per year for the past two years while continuing to be at-risk for flood damages.

Wilson advised against this approach, saying that the U.G. should ensure that the cost is shared across the county. Placing the burden of construc-



A view of the Turkey Creek tunnel, running underneath I-35 near 7th St. Trafficway. The tunnel, built in 1919, is undergoing significant repairs to better handle flood waters from the creek.

tion costs for the Turkey Creek project solely on the backs of Rosedale businesses is unfair and could set a bad precedent for the county's other major infrastructure and public works projects. ☐

A big thank you...

...to everyone who attended the July 30 budget hearing in the U.G. Commission Chambers at City Hall. Your presence played a huge role in persuading the Commissioners to continue funding the U.G.'s portion of the Turkey Creek flood control project in 2008. Way to go, people power!

Freedom School concludes first year in Rosedale with an exciting performance

On July 26, the *Rainbow Mennonite CDF Freedom School*SM held its first-ever Finale presentation to celebrate the accomplishments of the children and mark the end of the program. Nearly 200 people attended, including children, parents, staff, and community members.

Using the theme of "Music in the Movement," the children and staff presented songs, skits, poetry readings, and cheers and chants to demonstrate what they had learned at the Freedom School this summer. Each child performed on stage. The performance exhibited a high level of energy and enthusiasm, which is characteristic of the Freedom School model.

RDA was one of many supporters of the *Rainbow Mennonite CDF Freedom School*, assisting with publicity, consulting, and fundraising. The program fits well with one of RDA's priorities for 2007, which is to "promote educational enrichment opportunities for youth and families."

This summer was the first time that a Freedom School was held in Rosedale. Based on the 1960s-era Freedom Schools in the American South during the civil rights movement, the modern-day Freedom Schools are designed to bring out the best in children, promoting academic enrichment and a sense of pride in one's self, culture, and community in a safe and supportive environment. Children are taught about appropriate methods of conflict resolution and about the importance of community service. The program is also characterized by an emphasis on

parental involvement, multi-generational mentoring, and involvement in the community.

The *Rainbow Mennonite CDF Freedom School*, located at the Rainbow Mennonite Church in Rosedale, was just one of more than 100 Freedom Schools across the country and one of 18 in the Kansas City metro area. Approximately 85% of the children who attended the Rainbow Mennonite site were from the Rosedale community. Average daily attendance was in the

Volunteers step up to make a difference

In line with its efforts to maintain the housing stock in Rosedale, assist low-income and senior homeowners, and partner with organizations desiring to volunteer in the community, RDA coordinated two major volunteer projects in the past several months, helping local residents with repairs and improvements to their properties.

The first project was held on May 19 at the home of Jennie Lee Geer. Seven adults from the Catholic Young Adults Service Club (CYASC) and two youth participated that day in painting the exterior of Geer's house, cleaning her patio, and doing other yard work. Before starting to paint, the volunteers had to scrape off the old paint and wipe down and clean the surface. After painting the main part of the house, they then completed the intricate work of painting the trim.

The second project was held on August 2, in partnership with the University of Kansas Medical Center. As part of the Med Center's M1 Volunteer Day, 23 first-year medical students joined with RDA in painting the house and garage of Bob and Clois Ferrell. The volunteers also fixed a broken step and did miscellaneous yard clean-up. The

60-70 range, but a total of 94 children came through the doors for at least one day. The program lasted for six weeks, Monday-Friday, 8:00 a.m.-3:00 p.m. each day, and served children in grades K-8.

Thank you to the individuals, businesses, agencies, and institutions that supported the Freedom School in Rosedale. Due to your contributions, the program was largely a success in its first year. It truly does take a community to raise a child (and in this case, many children)! ☑

purpose of the M1 Volunteer Day is to provide new medical students with a team-building experience and a tangible way to give back to the community where the Med Center is located. In addition to the medical students, three youth and one other adult helped with the project.

Thank you to these awesome volunteers for donating their time and energy to assist these elderly homeowners and help make Rosedale a beautiful place to live. ☑



LINDA WRIGHT PHOTO

First-year students from the University of Kansas Medical Center scrape dirt and old paint off of a home in Rosedale, as part of KUMC's annual M1 Volunteer Day. Later, the volunteers re-painted the entire exterior of the house. RDA helped organize the one-day project.

Rosedale Briefs

■ "It's tool time!"

RDA frequently receives requests from churches, businesses, and civic groups looking for volunteer projects in Rosedale. We want to keep them busy. If you know of a house that needs painting, a porch that needs fixing, a yard that needs cleaning, or any other minor home repair or beautification project, please call the RDA office as soon as possible: (913) 677-5097.

■ Christmas in October

RDA is now accepting applications for Christmas in October, an annual minor home repair program serving elderly, disabled, or otherwise deserving homeowners. Every year, RDA partners with KU Medical Center on Rosedale's version of the program. If you would like to refer a local homeowner to the program, contact the RDA office, (913)-677-5097.

■ Picking up the pieces

Thank you to KCKPD Community Officer Carlos Rodriguez, Rosedale resident Forrest Rhea, and a handful of community service workers for picking up trash along Southwest Blvd., from the state line to the RDA office. More than 30 bags of trash were collected. Your efforts are much appreciated. Good job!

■ RDA sends three youngsters to camp

Sensing a need in the community, RDA provided scholarships this summer to three Rosedale youth, enabling them to attend two different summer day camps. The scholarships were made possible by donors who contributed to the Ryan Patrick Memorial Camp Scholarship Fund, established last year in honor Ryan Patrick, the late son of an RDA supporter. Two of the youth, Kimberlee McFadden and Maria Ortiz, attended the YWCA's "Green Girls" camp on June 18-29. Maria and another youth, Joshua Cabbage, participated in "Visual Stories," a youth studio class that met twice a week for three weeks at the Nelson-Atkins Museum of Art. "He [Joshua] would not have been able to go to camp if you guys [RDA] hadn't stepped in...It was a really good experience for him," said Kari Cabbage, Joshua's mother. Congratulations to these three young people and thank you to those of you who contributed to the Ryan Patrick camp fund! Your donations made a positive impact on the lives of these children.

Rosedale History Quiz

In each issue of *The Rosedalian*, there will be a historical photograph of a place in Rosedale along with an accompanying question. The first person to answer the question correctly will receive a prize. Submissions must be e-mailed to: rosedalehistoryquiz@yahoo.com or called in to the RDA office: (913) 677-5097. Please provide your name, address, and phone number.

Last month's photograph & question:

Question: Name this building. Hint: It no longer exists.

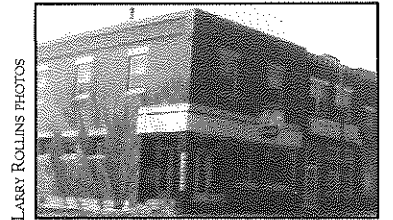
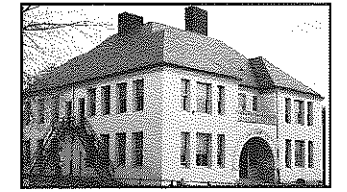
Answer: The old Columbian School, located at 519 Seminary St. Built in 1888 and demolished in 1966.

Winner: No one answered the question correctly.

This month's photograph & question:

Name the current and former occupants of these two side-by-side storefronts.

The answer will be provided next month.



LARRY ROLLINS PHOTOS

Jazz camp hosted by RDA

For six weeks this summer, RDA served as the facility host for the "Open Your Eyes to the Life of Jazz" summer camp. Each day, the melodious sounds of jazz could be heard coming from RDA's next-door community center, as approximately 25 youth and their adult directors used the space to practice and rehearse.

The jazz camp is a program for primarily high school-age young people from Kansas City, Kan. to develop their musical skills and an appreciation for jazz music. In addition to improving their

own playing abilities, students learned about jazz theory and history, sound velocities, time signatures, and rhythm patterns. Students also worked on phrasing, sight-reading, tone quality, breathing techniques, and improvisation.

An annual program, the jazz camp is run by the Kansas City Performing Music and Arts Association (KCPMAA), a not-for-profit organization founded by long-time Rosedalian, Elwanda C. Richardson. For more information, visit: www.kcpmaa.org. ☑

Beautifying Rosedale

RDA partnered with Kansas City Kansas Fire Department Station No. 10 to make landscaping improvements to the exterior of the fire station, planting flowers and shrubs and adding mulch to several garden plots. Station No. 10 is located on 36th Ave. in Rosedale, near the post office and Landon Center on Aging. This volunteer effort exemplifies RDA's commitment to keeping Rosedale a clean and attractive place to live, work, and play. Keep up the good work, Station No. 10!

Membership application

Annual business dues: \$100 ☑ Annual household dues: \$15

Name of business or name of household

Address City State ZIP code

Contact person

Day phone Evening phone Fax

E-mail address

Please mail application, along with check made payable to:
Rosedale Development Association
1403 Southwest Blvd.
Kansas City, Kan. 66103

*Rosedale Business of the Month***National Gulf War Resource Center**

Address: 1403 Southwest Blvd., Suite 2B, Kansas City, Kan. 66103, **Phone:** (913) 831-7183,
Website: www.ngwrc.org

For several months, RDA has been leasing some of its office space to the National Gulf War Resource Center (NGWRC), which functions as an international coalition of advocates and organizations providing information, support and referrals for all veterans affected by the complexities of current and recent combat operations (1990 to current).

The NGWRC helps individual veterans access the medical care, disability benefits, and other services they are entitled to under U.S. law. Many of the veterans served by the organization are affected by Gulf War toxin-induced illnesses, Traumatic Brain Injury, Post Traumatic Stress Disorder, and other ailments. By the time they contact the NGWRC, they have usually exhausted all of their other options and have experienced difficulty with the established system for obtaining benefits. They often do not have anywhere else to turn.

"We will not do all of the work for them, but we will walk them through it," says Paul Davidson, the NGWRC's Executive Director and



Cheyne Worley, a Gulf War veteran, serves as President of the Board of the NGWRC. He resides in the Kansas City area.

long-time RDA Board member, speaking about the veterans who contact the NGWRC. "We encourage them to get all the pieces together and gather all of the evidence, to make sure they get the care they have earned."

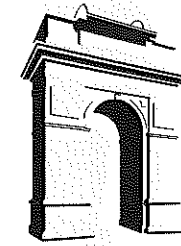
The NGWRC also serves as an advocacy and education agency, on behalf of veterans and their families. Several times a year, staff persons, Board members, and volunteers testify before Congressional committees in Washington, D.C. and advocate for legislation that will benefit veterans. The organization also hosts an annual conference to educate its members and the public about veterans' issues, and it provides extensive information and resources on its website, as well.

How did the NGWRC get to the RDA office? When circumstances changed and the NGWRC needed to move from its previous location in Kansas City, Paul knew where to look. As an RDA Board member, he was aware of open office space at RDA and approached RDA's Executive Director, Wendy Wilson, about moving in. It was a smooth transition. The NGWRC pays a small amount in rent every month, providing RDA with a source of revenue while simultaneously having a relatively inexpensive space to conduct its work.

RDA is grateful for the partnership with the NGWRC, and is glad it can provide office space for the organization. The NGWRC is a critical advocate for our nation's veterans.

"For the 200-300 new people we serve each year, there is no other place they can go... We are the central resource they can depend on," says Paul.

If you know of someone who might benefit from the NGWRC's services, visit the organization's website or call: (913) 831-7183. ☐



The Rosedalian

ROSEDALE DEVELOPMENT ASSOCIATION NEWSLETTER

Once again, Rosedale Optimists come through for youth

The Rosedale Optimist Club, in existence since 1958, has a knack for stepping up at just the right time. In response to several RDA urgent needs, the Optimists recently made a contribution of \$2,000 to RDA's youth programs — thus, more Rosedale children and families will be able to participate and benefit from the programs this year.

The donation is especially timely this year because RDA's Excellence in Education program, a partnership with KU Community Policing and several Rosedale-area schools, lost its funding for T-shirts that are given as awards to students who achieve at a high level. In the Excellence in Education program, students are recognized for academic excellence, near-perfect attendance, and citizenship. They are honored at a public ceremony, and presented with a trophy, medal, and/or T-shirt.

The Optimists' generosity will allow the program to continue as it has in the past. Through a connection with Appreciated Advertising, a full-service advertising specialties company located on Merriam Lane, the club purchased the T-shirts and was able to secure a discounted price for the printing. Appreciated Advertising also waived the normal set-up and design fees. Look for a feature article on the company in next month's *Rosedalian*.

"What we [Optimists] do is work for the youth," says Pat Brown, an active Rosedale Optimist and former member of the RDA Board. "Since we're a Rosedale club, we try to help the youth in this area."

The \$2,000 donation is just the most recent of the Optimists' contributions to RDA and the Rosedale community. Over the years, Brown estimates that the Rosedale club has given more than \$10,000 to RDA. Most of the money has gone toward youth programs, in line with the Optimists' mission, how-

ever the Rosedale club has also contributed to the maintenance of the Rosedale Arch grounds. They have sponsored a bench in the park surrounding the Arch, and they have given money for new flags for the Arch flagpole.

In addition, the Rosedale Optimists co-sponsor the annual Easter Egg Hunt in Whitmore Park, along with the

Rainbow Mennonite Church/Sharing Community in Rosedale.

RDA would not be able to function without partners like the Rosedale Optimist Club. This most recent donation will empower RDA to continue serving the youth and families of Rosedale, with programs that make a difference in their lives. Thank you, Rosedale Optimists! ☐

Fresh new faces in Rosedale

Five new students from the University of Kansas School of Social Welfare have joined the Rosedale Community Project (RCP), one of RDA's main partners, for the 2007-08 school year. The students come to the RCP to complete a field practicum as part of their BSW or MSW degree program. They facilitate and implement programs, work with youth and senior citizens, and help to assess the community's needs. Their vital contributions assist RDA in fulfilling its mission to the Rosedale community.

This is the ninth year of the professional relationship between RDA and the KU School of Social Welfare. It has been a successful partnership for both organizations: the KU students acquire hands-on experience in the types of social work that they are interested in, while simultaneously RDA receives additional personnel to carry out its mission to serve Rosedale.

This year, the students and their

advisor, Donna Devine, will be working closely with Rosedale Middle School to connect underserved and uninsured youth with community-based health services. They will have an office at the school and will develop relationships with students, parents, teachers, and administrators in an effort to create a healthy environment and help students access the resources they need. The arrangement is made possible by a one-year grant from the Kansas City-based R.E.A.C.H. Healthcare Foundation. ☐



The new KU social work students who are working in Rosedale this year: (kneeling in front) Mikey Fletcher-BSW, (standing, from left to right) Mandy Bruns-MSW, Erin Pearce-BSW, Donna Devine-supervisor, Madelaine Tack-MSW, Lora Swartzendruber-MSW.



1403 Southwest Blvd.
Kansas City, Kansas 66103

RETURN SERVICE REQUESTED

Non-Profit Org.
U.S. Postage
PAID
Permit No. 233
Kansas City, KS

Changes in the neighborhood

At the Mission Cliffs housing development, the sights and sounds of construction – excavators, front-loaders, trucks, lumber, bricks, hammers, drills and more – are everywhere. The brand-new 115-home community continues to take shape near the intersection of Minnie St. and Lake Ave. in Rosedale.

When completed, these single-family detached homes and townhomes will be a tremendous asset to the Rosedale community. They will be owner-occupied, which will increase neighborhood stability and investment, and they will contribute to rising property values and an increased tax base.

It was RDA's vision and determination, and later the partnership with City Vision Ministries, a fellow not-for-profit community development corporation, which led to the Mission Cliffs project – the first fruits of which are now becoming visible.

As a supplemental piece to the new housing development, RDA also contributed Community Development Block Grant (CDBG) funds that were targeted for the Mission Cliffs project to make streetscape improvements to the area immediately south of the Minnie St. and Lake Ave. intersection (3900 block of

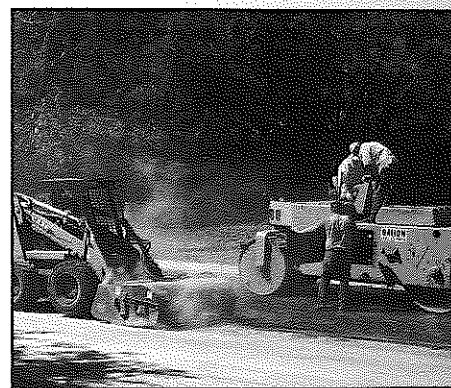


WENDY WILSON PHOTOS

Above: A row of townhomes being constructed in the 2800 block of Lake Ave. in the Mission Cliffs development nears completion. Prices for the units start around \$190,000. Below, right: Construction workers use heavy equipment to make streetscape improvements close to the Mission Cliffs project. Such infrastructure and beautification efforts are critical to the success of the development.

Minnie St.). There are four older homes on that block, and RDA wanted to make sure that the residents of those homes benefited from the new development. The streetscape improvements consist of new curbs, a new small parking lot, and improved drainage.

For more information on the Mission Cliffs project, visit: www.missioncliffstowndev.com or call: (913) 677-1707. For home prices and sales, contact Prudential Kansas City Realty: (913) 384-2545. ☎



Get those paintbrushes and hammers ready: It's time for Christmas in October

Are you looking for a rewarding and fun volunteer experience, a way to meet new friends? Then, consider joining RDA, the University of Kansas Medical Center, and the University of Kansas Hospital for Rosedale's Christmas in October, an annual program that provides materials and volunteers to make needed home repairs for elderly, disabled, and/or other low-income homeowners.

Typical volunteer tasks include painting, weeding, trimming bushes and shrubs, fixing porches and steps, and more. You do not need to be a highly skilled worker to make an impact with this program; everyone can help in some way.

This year's program will take place on

Saturday, Oct. 13. Mark your calendars.

RDA and the two KU entities have partnered on Rosedale's version of Christmas in October for many years. The program provides an excellent way to maintain and improve the housing stock in our community and to tangibly serve people in need.

In Rosedale, program referrals come from a wide variety of agencies and residents. Representatives from RDA and KU evaluate each referral to determine eligibility and project difficulty.

If you would like to volunteer at this year's Christmas in October event, contact the RDA office: (913) 677-5097. ☎

Goldenberg duo to play concert at Rosedale church

Susan and William Goldenberg, a sibling duo, will present a special concert on Monday, Sept. 24 at 5:30 p.m. in the sanctuary of Rainbow Mennonite Church (1444 Southwest Blvd.). The concert is free and open to the public.

Susan has played in the first violin section of the Kansas City Symphony for more than 25 years, and has an extensive resume of performing and teaching in the U.S., Europe, and Costa Rica. Her brother William earned a doctoral degree in piano performance from Indiana University, and is now the chair of the piano department at Northern Illinois University. He also has an extensive resume of performing and teaching around the world.

Their concert will include a sonata by Schubert, as well as a set of pieces titled "Yankee Doodles" and several ragtime pieces. It will be a varied and exciting concert.

In addition to the concert, a meal will be provided for those who would like to stay for fellowship. A donation will be accepted to help defray the costs of the meal and concert. Please R.S.V.P. to the church office (office@rainbow-mennonite.org) if you would like to stay for the meal. ☎

Rosedale Obituary

Gerald Lee Dittmore, Jr., owner of the Rosedale business Imports Only, Inc., passed away on August 27. Gerald, 40, leaves behind many beloved friends and family members. He was well-liked by his fellow proprietors on the Southwest Blvd. business corridor in Rosedale.

His company, Imports Only, was an RDA business member. Gerald was involved with many charitable organizations, including Putts for Mutts and Bikers for Babies. He will be missed.

Rosedale History Quiz

In each issue of *The Rosedalian*, there will be a historical photograph of a place in Rosedale along with an accompanying question. The first person to answer the question correctly will receive a prize. Submissions must be e-mailed to: rosedalehistory-quiz@yahoo.com or called in to the RDA office: (913) 677-5097. Please provide your name, address, and phone number.

Last month's photograph & question:

Question: Name the current and former occupants of these two side-by-side storefronts.

Answer: The storefronts are at 1401 and 1403 Southwest Blvd., which is currently RDA's Koch Community Center and main office, respectively. Former occupants include a bank, a doctor's office, and the Apothemat pharmacy, among others.

Winners: Claudette Patterson, Pat Stripling-Brown & Jim Turley

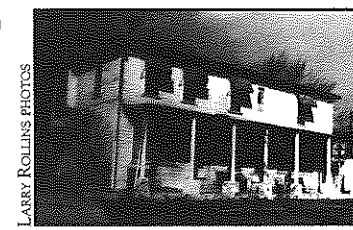
This month's photograph & question:

Question: Name this now-defunct place of lodging and its approximate location. *Hint: It was torn down in 1983.*

The answer will be provided next month.



LARRY ROLLINS PHOTOS



Attention, RDA supporters!

Now you can make secure online donations to RDA through the Donor Edge website. (Giving to a good cause has never been so easy.)

1. Visit RDA's website: www.rosedaleassociation.org.
2. Click on "Donate."
3. Click on the Donor Edge icon.
4. Look for the "Make Credit Card Donation" link.
5. Fill in the amount you want to give, along with other required information, and poof! You've contributed to the health and safety of the Rosedale community.

All donations are tax-deductible. We appreciate your partnership in building a safe and healthy community and improving Rosedale's quality of life. ☎

Membership application

Annual business dues: \$100 ☎ Annual household dues: \$15

Name of business or name of household _____

Address _____ City _____ State _____ ZIP code _____

Contact person _____

Day phone _____ Evening phone _____ Fax _____

E-mail address _____

Please mail application, along with check made payable to:
Rosedale Development Association
1403 Southwest Blvd.
Kansas City, Kan. 66103

ROSEDALE DEVELOPMENT ASSOCIATION

Working in partnership with residents, businesses, and institutions to build a strong and healthy community and to improve the quality of life for those who live, work, and play in Rosedale.

1403 Southwest Blvd.
Kansas City, Kan. 66103
Phone: (913) 677-5097
Fax: (913) 677-3437
www.rosedaleassociation.org
Monday-Friday, 9 a.m.-5 p.m.

Wendy Wilson, Executive Director
Linda Wright, Office Manager
Joel Goering, Community Organizer

Board of Directors,
www.rosedaleassociation.org/who_board.htm

Newsletter design by Elizabeth Johnston, Lizzardbrand Inc.,
www.lizzardbrand.com