

Rosedale Business of the Month

Appreciated Advertising

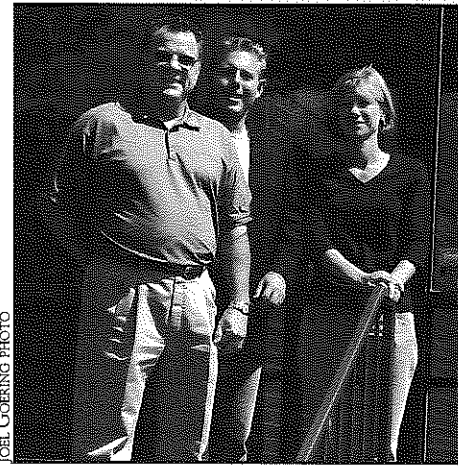
Address: 2340 Merriam Lane, Kansas City, Kan. 66106, Phone: (913) 722-6565, Hours of operation: Mon.-Fri., 8:00 a.m.-5:00 p.m. Website: www.appreciatedadvertising.com

While Appreciated Advertising is technically located outside of Rosedale, it stepped up in a big way to support Rosedale this past month.

At the request of Pat Brown, a member of the Rosedale Optimists and a former RDA Board member, the company waived the set-up costs and artwork costs for the Excellence in Education program T-shirts for the 2007-08 school year – thereby providing a significant discount and enabling the important Rosedale program to continue.

“We try to be involved,” says Kevin Palmer, the account manager who worked with Brown on the T-shirt order. “That’s just how we are, when it’s a community project,” he adds, in describing about Appreciated Advertising’s civic spirit.

Excellence in Education is a partnership program between RDA and KU Community Policing. It recognizes students at four Rosedale schools (Rosedale Middle, Frank Rushton Elementary, T.A. Edison Elementary, and Holy Name) who have achieved academically, maintained an exceptional attendance record, and practiced good citizenship. Students can



The folks responsible for this year’s Excellence in Education T-shirts (from left to right): Kevin Palmer (Account Manager), Jeff Ford (Vice President), and Tracy Mears (President).

receive a medal, a trophy, and/or a T-shirt.

However, this year, the funding for the T-shirt portion of the program was cut, forcing program administrator and KU community police officer George Kemper to look for other options.

The Rosedale Optimist Club and Appreciated Advertising stepped in to fill the gap. The Optimists purchased the T-shirts, and then Appreciated did the printing

– with the discounts mentioned earlier. Both groups’ generosity will make it possible for the program to continue. Thank you!

Appreciated Advertising opened in Kansas City in 1951 and over the years has grown into a regional promotional products company with offices not only in Kansas City, but also in El Dorado, Pittsburg, and Wichita. The company works with all types of clients, from individuals and small businesses to large Fortune 500 corporations.

The company provides clients with lots of choices for “branding”. Clients can put their logo or other design onto just about anything, including, but not limited to: tote bags, water bottles, pins, pens, key chains, pillows, clocks, lanyards, umbrellas, hats, visors, and T-shirts. These products can be used for incentive programs, trade show hand-outs, sporting events, company apparel, and more.

As Palmer states it, “We can put your name in the hands of the people you want to get it to.”

The next time you need something with your name or logo on it, consider Appreciated Advertising. ☺



# The Rosedalian

## ROSEDALE DEVELOPMENT ASSOCIATION NEWSLETTER

### Help Rosedale families and seniors this Thanksgiving

It is sometimes said that a team is only as strong as its weakest member. This is also true of communities: we are only as strong as those who are the most vulnerable among us.

Rosedale, like all communities, has its share of persons and families who are vulnerable. Perhaps a single mother is attempting to raise her children on a job that pays minimum wage. Maybe a hard-working father has lost his job, making it difficult to pay his children’s medical bills. Possibly an elderly couple is just scraping by on a very limited, fixed income. There are numerous stories like this in our community.

To respond to the immediate needs of individuals and families in these types of situations, RDA and the University of Kansas Fraternal Order of Police Lodge No. 37 are joining forces for the 22nd consecutive year to provide Thanksgiving gift baskets to at least 20 families and senior citizens so that they can enjoy the holiday.

You, too, can get involved in this important effort:

- Donate non-perishable food items and household products (see list below).
- Make a cash donation.
- Sponsor a complete basket for a family by purchasing all of the items listed below, plus a plastic, laundry basket.
- Volunteer to assist with sorting on Nov. 16 or delivery on Nov. 17.

Here is the list of non-perishable food items and household products that may be donated:

- canned vegetables and fruit
- stuffing mix
- rice/pasta

- cranberry sauce
- soup
- corn bread/muffin mix
- pinto/red/black beans
- canned meat
- flour & sugar
- salt & pepper
- cereal
- peanut butter & jelly
- macaroni & cheese
- cake/cookie mix
- popcorn

- oven cooking bags
- aluminum baking pans/foil
- toilet paper
- paper towels
- soap & detergent
- shampoo
- toothbrush & toothpaste

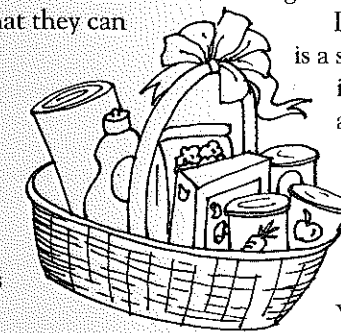
For more information and/or to get involved, call the RDA office: (913) 677-5097. Donations may be dropped off at the RDA office from now until Nov. 13. ☺

### Tutors/mentors needed at Rosedale Middle School

Research shows that children who have caring, responsible adult role models in their lives on a consistent basis do better in school and later in life. They have lower rates of teen pregnancy and alcohol and illegal drug use, and are more likely to finish school and have higher self-esteem.

It is for these reasons that RDA is a strong supporter of the tutoring and mentoring program at Rosedale Middle School, which is being organized by the Rosedale Community Project (a practicum site of the KU School of Social Welfare) in partnership with YouthFriends (a Kansas City-based mentoring organization).

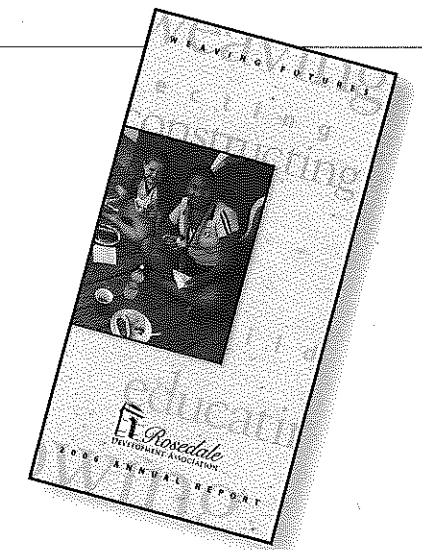
Tutors and mentors are currently needed on Wednesday afternoons at the school, which is located at 3600 Springfield St. Tutoring in math and reading will take place from approximately 1:00-2:00 p.m., while a more informal time of games and activities will take place from approximately 2:00-3:00 p.m. Tutors are being asked to commit to regular participation until the end of the school year in May, but there are opportunities to volunteer on a one-time basis, as well.



1403 Southwest Blvd.  
Kansas City, Kansas 66103

Non-Profit Org.  
U.S. Postage  
PAID  
Permit No. 233  
Kansas City, KS

RETURN SERVICE REQUESTED



RDA’s 2006 Annual Report is now available online: [www.rosedaleassociation.org](http://www.rosedaleassociation.org).

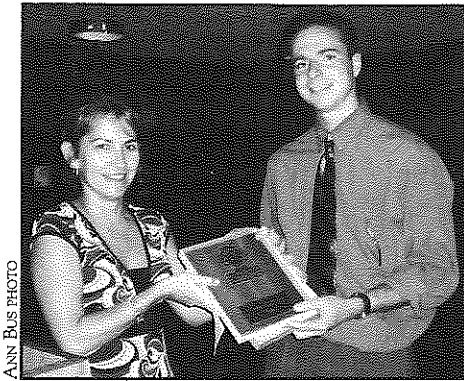


## Kansas Bar Association recognizes RDA staff member for mediation program

On Sept. 19, the Kansas Bar Association (KBA) presented Joel Goering, RDA's community organizer, with an "Outstanding Service Award" for 2007, for his efforts in developing an innovative conflict resolution program for neighborhood disputes in Rosedale and Kansas City, Kan.

Goering began working on the conflict resolution program soon after he started at RDA in September 2004. Having graduated with a B.A. in "Peace and Justice Studies" and possessing an interest in mediation, it seemed like a natural fit for Goering to focus on building a program that would help neighbors resolve conflicts in an open, non-violent, and non-threatening manner.

Officially named the Rosedale Conflict Resolution Center (RCRC), the new RDA program was (and is) designed to empower residents to resolve their own neighborhood disputes through the process of mediation or other forms



**Delia York, Assistant Counsel for the Unified Government's Legal Department, presents the KBA "Outstanding Service Award" to Joel Goering, RDA's community organizer, for his work to establish a neighborhood mediation program in Rosedale.**

of non-violent and non-court dispute resolution. Instead of resorting to the time-consuming and expensive court system (i.e. small claims court), residents experiencing civil (non-criminal) conflicts could now try mediation.

Typical conflicts handled by the

RCRC are those involving noise, pets/animal control, property lines, fences, and parking. These are usually conflicts in which no crime has been committed and no ordinance has been violated, but that if left unattended and festering, could escalate into more serious disputes in the future. Thus, the RCRC seeks to be a preventative program, to address conflict before it grows out-of-control.

Mediation services continue to be provided at little or no cost to participants. Referrals for the program come from community police officers, Unified Government staff, neighborhood group leaders, and residents themselves.

The RCRC also provides workshop-style conflict resolution skills trainings to neighborhood groups, police officers, U.G. staff, and more.

To inquire about the program, to make a referral, or to set up a conflict resolution training for your group, contact Goering at the RDA office: (913) 677-5097. ☐

## Collaborative effort leading to improved services for older adults

The Rosedale Senior Forum, an ad-hoc coalition of individuals and organizations dedicated to enriching the lives of senior residents in Rosedale, continues to be a powerful and unique asset for the community and its older population.

Started about a year ago, in fall 2006, the Senior Forum has several purposes: (1) to enhance the quality of life of senior residents; (2) to identify needs and gaps in service to the area's seniors; (3) to facilitate networking and cooperation among various groups, so as to avoid duplication and redundancy; (4) to promote events and programs that benefit seniors; and (5) to raise awareness and educate the broader public about issues facing older adults.

One example of a successful project undertaken by the Rosedale Senior Forum is publishing a calendar every other month in *The Communicator*, a newsletter of the Wyandotte/Leavenworth Area Agency on Aging. The calendar includes a listing of Rosedale programs and activities of interest to older adults and those who care for them.

The members of the Senior Forum

also support each other's events, such as the Fun with Singing choral group, the annual Landon Center Senior Celebration, the Senior Express transportation program, and the Area Agency on Aging Nutrition Program.

Representatives from the following agencies participate in the Senior Forum: the Landon Center on Aging, Rosedale Community Project, Rosedale Congregational Church, Shepherd's Center of Kansas City, Kan., Southview Health Care, and the Wyandotte/Leavenworth Area Agency on Aging. Rosedale residents participate, as well.

Currently, the group is conducting a survey of Rosedale seniors, seeking their input on strengths and challenges in the community and needed programs and services. The survey is being mailed in *The Communicator*. If you are an older adult in Rosedale and do not receive *The Communicator*, contact Donna Devine for a copy of the survey: (913) 677-2561.

You may also contact Donna for more information or if you'd like to join the Senior Forum. All persons interested in enhancing the quality of life for Rose-

dale seniors are encouraged to participate. The group meets once a month at different locations in the community. ☐

### ROSEDALE DEVELOPMENT ASSOCIATION

Working in partnership with residents, businesses, and institutions to build a strong and healthy community and to improve the quality of life for those who live, work, and play in Rosedale.

1403 Southwest Blvd.  
Kansas City, Kan. 66103  
Phone: (913) 677-5097  
Fax: (913) 677-3437  
www.rosedaleassociation.org  
Monday-Friday, 9 a.m.-5 p.m.

**Wendy Wilson**, Executive Director  
**Linda Wright**, Office Manager  
**Joel Goering**, Community Organizer  
**Board of Directors**,  
www.rosedaleassociation.org/  
who\_board.htm

Newsletter design by Elizabeth Johnston, Lizzardbrand Inc.,  
www.lizzardbrand.com

## Rosedale Briefs

### Free & low-cost spay/neuter for pets

The Pet Connection, located at 5918 Broadmoor St. in Mission, Kan., is offering free and low-cost spay/neuter services, low-cost vaccinations, and other veterinary care. Take advantage of these services located just across the county line. You, your pet, and the community will all benefit. Responsible pet ownership is critical to ensuring a safe community and humane treatment of animals. Call: (913) 671-7387.

### Want better public transit in Rosedale?

Provide input and express your opinion on how to improve Greater Kansas City's public transit system at an upcoming facilitated community meeting, to be held on October 24, from 6:00-7:30 p.m. at the Neighborhood Resource Center in Indian Springs shopping center, 4601 State Ave. in Kansas City, Kan. This meeting is one of 25 that will be held throughout the metropolitan area to engage citizens on the issue of public transit. For more information, contact Liana Riesinger: (816) 701-8269.

### Beware of carbon monoxide poisoning

Fall and winter are the prime flu seasons, however they are also the prime carbon monoxide (CO) poisoning seasons. The symptoms of CO poisoning closely resemble those of the flu, including: headaches, nausea, light-headedness, and shortness of breath. If you frequently experience these symptoms in your home while fuel-burning appliances are being used, it may be time to have the house checked by a professional. CO is odorless and colorless, making it difficult to trace and particularly dangerous. You can also protect yourself by installing a CO detector in your home. CO detectors are available at most area retail and hardware stores and are relatively inexpensive. Every home should have at least one CO detector.

### Prepare for those winter heating bills

Harvest America, a non-profit community-based organization, is offering free home weatherization services to Kansas residents who meet income and housing guidelines. The organization will conduct an energy audit on eligible homes, and if necessary, will make home improvements or repair to increase energy efficiency and lower utility bills. Services may include air sealing, insulation, and furnace repair. For more information, contact Harvest America's Kansas City, Kan. office: (913) 342-2121.

## Rosedale History Quiz

In each issue of *The Rosedalian*, there will be a historical photograph of a place in Rosedale along with an accompanying question. The first person to answer the question correctly will receive a prize. Submissions must be e-mailed to: rosedalehistory-quiz@yahoo.com or called in to the RDA office: (913) 677-5097. Please provide your name, address, and phone number.

### Last month's photograph & question:

**Question:** Name this now-defunct place of lodging and its approximate location. *Hint: It was torn down in 1983.*

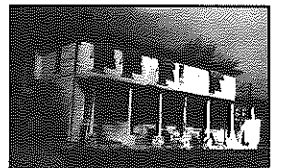
**Answer:** The old Rosedale Hotel, located on the corner of S. Mill St. and Lake Ave.

**Winners:** No one answered the question correctly this month.

### This month's photograph & question:

**Question:** What was the name of this Rosedale business and where was it located?

The answer will be provided next month.



### Upcoming Events

**October 24:** Public Transit citizen engagement meeting. Indian Springs-Neighborhood Resource Center. 4601 State Ave. 6:00-7:30 p.m.

**October 26:** Landon Center on Aging annual chili feed. Proceeds go to the "Adopt-a-Senior at the Holidays" program. 36th and Rainbow Blvd. 11:00 a.m.-1:00 p.m. \$5.

**October 31:** Blood Drive, sponsored by the American Red Cross and RDA. 1401 Southwest Blvd. 10:00 a.m.-2:00 p.m. To sign up, call Linda: (913) 677-5097.

**November 13:** Donation deadline for RDA's Feed-a-Family program. See article on page 1.

**November 20:** Rosedale Community Thanksgiving Worship Service, sponsored by Rosedale Ministerial Alliance. Greystone Missionary Baptist Church. 133 Greystone Ave. 7:00 p.m.

## Membership application

Annual business dues: \$100 ☐ Annual household dues: \$15

Name of business or name of household

Address City State ZIP code

Contact person

Day phone Evening phone Fax

E-mail address

Please mail application, along with check made payable to:  
Rosedale Development Association  
1403 Southwest Blvd.  
Kansas City, Kan. 66103

Rosedale Business of the Month

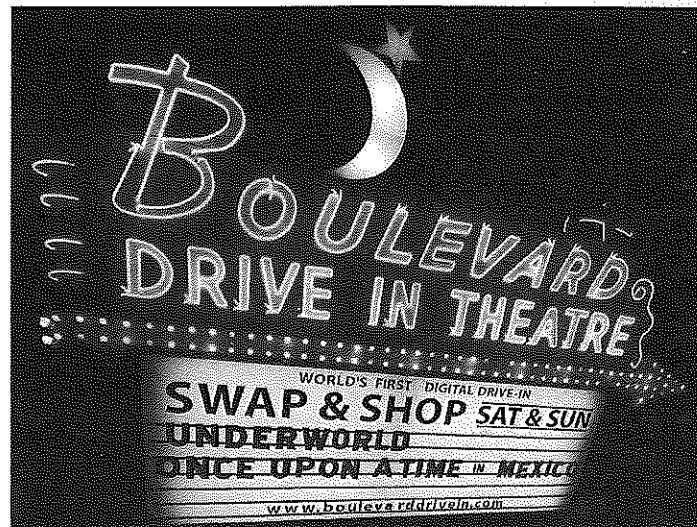
## Boulevard Drive-In Theatre

Address: 1051 Merriam Lane, Kansas City, KS 66103, Phone: (913) 262-2414, Website: www.boulevarddrivein.com

A fixture on Merriam Lane for nearly 60 years, the Boulevard Drive-In, is one of Rosedale's most-recognizable community assets and entertainment venues. What better way to spend a pleasant evening than watching a couple of films at the "World's Greatest Drive-In," as the theatre's marquee puts it? Or, on weekends, where can you find better deals than at the Swap-and-Shop flea market, open year-round?

Having survived periodic flooding from Turkey Creek and the cutthroat competition of the movie theater industry, the Boulevard's success is a testament to the dedication and business savvy of its owner, Wes Neal. While he sounds a pessimistic tone about the future of the drive-in theater business, Neal nevertheless has been able to keep the crowds coming back, year after year.

The Boulevard Drive-In Theatre opened on June 30, 1950, with a



**Arguably one of Rosedale's most-recognizable icons, the Boulevard Drive-In marquee sign lights up the night sky along Merriam Lane.**

showing of "A Lady Takes a Sailor." It has operated continuously ever since, although the theater is now only open seasonally (from April-September). In fact, it has the distinction of being the longest-running movie theater in the Kansas City area. The Boulevard usually shows two movies per night, and at least one of them is always a first-

run movie. Ticket prices are \$7/person, so customers get a 2-for-1 deal every time.

Boasting 600 speakers equipped with the latest in digital sound technology – it claims to be the first drive-in theater in the world to install digital sound – the Boulevard averages about 700 cars in attendance per weekend. Neal is determined to keep it going; it is his passion. He has owned the Boulevard since 1993, but he has worked for the theater in some capacity since 1954 – more than 50 years!

The Swap-and-Shop flea market opened in 1975. Open on Saturdays and Sundays year-round, weather permitting, the market draws customers not only from all over Kansas City, but also from different states. Vendors pay \$10 for booth space, while buyers pay a \$1/person entry fee.

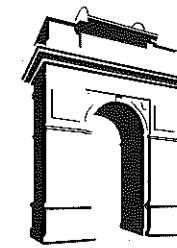
To learn more about the world-famous Boulevard Drive-In, one of Rosedale's finest, visit the website: [www.boulevarddrivein.com](http://www.boulevarddrivein.com). ☐

Non-Profit Org.  
U.S. Postage  
PAID  
Permit No. 233  
Kansas City, KS

 **Rosedale**  
DEVELOPMENT ASSOCIATION

1403 Southwest Blvd.  
Kansas City, Kansas 66103

RETURN SERVICE REQUESTED



# The Rosedalian

ROSEDALE DEVELOPMENT ASSOCIATION NEWSLETTER

## Feed-a-Family baskets provide a hearty Thanksgiving meal for Rosedale families

For the 22nd consecutive year, RDA and numerous members of the Rosedale community joined forces on Rosedale's Feed-a-Family program to provide Thanksgiving gift baskets to 22 families and senior citizens (80 individuals) in need of assistance this year. The gift baskets will provide food and other household items so that these Rosedale residents can enjoy the Thanksgiving holiday.

Throughout the first half of November, RDA served as a collection site for donations of non-perishable foods and household products, such as soap, shampoo, and toilet paper. Neighborhood groups, churches, businesses, schools, and others brought in items. Thanks to monetary contributions, RDA then purchased additional non-perishable and perishable food items for each gift basket. RDA secured eight turkeys from Harvesters, the Kansas City area's community food bank. The Church of Jesus Christ of Latter-Day Saints gave \$500 worth of commodities to the program, as well.

On Nov. 16, volunteers from the Catholic Young Adults Service Club (CYASC) helped sort, organize, and place all of the donations into baskets. The next day, on Nov. 17, some families picked up their baskets at the RDA office, while RDA delivered directly to the homes of others.

Beneficiaries for the program were referred by local schools, churches, and neighborhood groups. RDA staff then screened the referrals and determined the specific needs of each family.

Once again this year, the Rosedale community came through with a significant amount of donations. It is really a testament to the strength and vitality of Rosedale that so many people and organizations are willing to help their neighbors through this program.

To everyone who contributed, thank you so much for your generosity and compassion in making it possible for RDA to assist 23 families and provide them with needed groceries and household items for Thanksgiving.

The families wish to express their gratitude, as well.

Contributors (many not listed) include:

- Catholic Young Adults Service Club
- Church of Jesus Christ of Latter-Day Saints
- Rainbow Mennonite Church
- 3 Axis
- Clinical Laboratory Sciences Association
- Damage Control and Restoration
- KU Police – F.O.P. Lodge No. 37
- KC Winnelson
- John Rohrer Contracting Co.
- Millam Ditching
- Myrna Corpeny
- Donna and Pat Devine
- Helen Edwards
- Gary Hughes
- Virginia Hughes
- Carol Kane



**RDA staff members Linda Wright and Joel Goering inspect some of the items that were donated to the Feed-a-Family program before placing them in a basket for distribution to a Rosedale family.**

- Jeff Lysinger
- Cliff and Becky Mericle
- Pat Milburn
- Geoffrey and Joyce Patterson
- Jim and Lola Turley
- Wilma Trial
- John and Linda Wright ☐

## Your voice is needed at Dec.11 RDA Annual Meeting

This is an exciting time for Rosedale. Several new housing developments have been built recently, our schools are improving, and there are many organizations and institutions working together to create a stronger community. Despite these successes, there are challenges ahead, such as securing long-term funding for Turkey Creek flood control, finding solutions to address crime and blight, and fostering sustainable economic development.

At this critical juncture, RDA needs to hear from you – our constituents. You can tell us where to direct our focus, and how to better achieve our mission of building a strong and healthy com-

munity and improving the quality of life in Rosedale.

Mark your calendars for RDA's Annual Meeting. **Date:** Tuesday, December 11, 2007. **Time:** 6:30-8:00 p.m. **Location:** Landon Center on Aging, 36th and Rainbow Blvd.

All RDA members and stakeholders are welcome to attend. By participating in this meeting, you will help us chart our new course for the next year. This is an opportunity to share your hopes and dreams for the future of Rosedale, as well as give us ideas for how we can put those ideas into action.

We hope to see you there! **(Please RSVP by calling (913) 677-5097.)** ☐



## Partnerships bear fruit during Rosedale's Christmas in October

A continuing Rosedale collaboration made significant home improvements at eight different Rosedale homes last month, as part of the annual Christmas in October minor home repair program.

RDA congratulates and thanks the University of Kansas Hospital, the University of Kansas Medical Center, Strasser Hardware, Westwood Apple Market, and the Racing Association of Kansas (TRAK) East, for making this year's Christmas in October a huge success.

The KU Hospital and KU Medical Center, which have teamed up with RDA on Rosedale's version of Christmas in October for many years, provided the bulk of the volunteers for the project.

Strasser Hardware provided a sizable discount on paint, while Westwood Apple Market contributed lunches to the non-KU-affiliated volunteers. The Racing Association of Kansas (TRAK) East provided grant money to RDA for minor home repairs, which was tapped for this project.

Thank you to our many volunteers, who, due to a rainout on the originally-scheduled day for the program, stepped up and came back on subsequent weekends to finish their assigned tasks. Finally, another thank you to all of the house captains, who conducted preparatory assessments, gathered equipment and supplies, and supervised volunteers.

RDA provides materials and volunteers to make needed repairs and upgrades to older Rosedale homes. Typical tasks include exterior painting, yard work, window repair, fixing porches and steps, as well as interior repairs. Homeowners are usually elderly, disabled, or otherwise low-income and not able to undertake the repairs on their own. Thus, the program helps maintain and improve the housing stock and property values in the community, while simultaneously serving people in need.

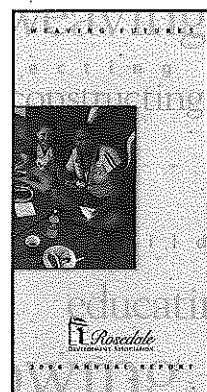
JOEL GOERING PHOTO



**A young volunteer from the Joshua Tent Ministries organization demonstrates his painting skills during Christmas in October last month.**

To qualify, residents must own their own home and have their utilities turned on. In Rosedale, referrals for the program come from RDA staff, neighborhood groups, churches, U.G. codes officials, and the homeowners themselves. Representatives from RDA and the two KU entities evaluate each referral to determine eligibility.

To view more pictures from the event, visit RDA's website: [www.rosedaleassociation.org/christmasinoctober-photos.htm](http://www.rosedaleassociation.org/christmasinoctober-photos.htm).



**RDA's 2006 Annual Report is online: [www.rosedaleassociation.org](http://www.rosedaleassociation.org).**

## ROSEDALE DEVELOPMENT ASSOCIATION

Working in partnership with residents, businesses, and institutions to build a strong and healthy community and to improve the quality of life for those who live, work, and play in Rosedale.

1403 Southwest Blvd.  
Kansas City, Kan. 66103  
Phone: (913) 677-5097  
Fax: (913) 677-3437  
[www.rosedaleassociation.org](http://www.rosedaleassociation.org)  
Monday-Friday, 9 a.m.-5 p.m.

**Wendy Wilson**, Executive Director  
**Linda Wright**, Office Manager  
**Joel Goering**, Community Organizer  
**Board of Directors**,  
[www.rosedaleassociation.org/who\\_board.htm](http://www.rosedaleassociation.org/who_board.htm)

Newsletter design by Elizabeth Johnston, Lizzardbrand Inc.,  
[www.lizzardbrand.com](http://www.lizzardbrand.com)

## Board candidates needed

There are two at-large positions on the RDA Board of Directors that are filled annually. One represents the business community; the other represents the residential community. Nominations are now being accepted for these positions. Ballots will be mailed in December. Dues-paying members of RDA are eligible to vote. The winners will serve 1-year terms beginning in January 2008.

If you would like to nominate yourself or someone you know for either of the available positions, contact the RDA office by Dec 7.

## Rosedale Briefs

### Get the Lead Out K.C.K.

Lead paint in older homes can cause serious health problems, especially in children. To address this problem, Project Lead-Safe KCK is offering FREE lead-based paint removal in Wyandotte County homes for eligible residents. To qualify, you must: (1) live in a Wyandotte County home built before 1978; (2) have a child below the age of six years old or a child under six visits your home more than 10 hours every week; (3) have an income less than 80% of the area's median income. Owners, occupants, and/or renters can be eligible for this service. For more information and to see if you qualify, call: (913) 262-0796.

### Help adults learn to read

Southwest Blvd. Family Health Care Services, a local low-income health clinic, is looking for adult tutors to help adult students learn to read in preparation for the GED. Time commitment is 3 hours per week, but scheduling is flexible. 15-hour training will be provided at no cost. Contact Punky Thomas: (913) 722-3100 x.253 or e-mail: [literacy-swb-fhcs@hotmail.com](mailto:literacy-swb-fhcs@hotmail.com).

### Upcoming events at the Landon Center on Aging

The University of Kansas Medical Center-affiliated Landon Center on Aging, located on the northeast corner of Rainbow Blvd. and 36th Ave., has periodic informational programs that are open to the public. Mark your calendars now for two excellent programs that will happen during the next few weeks at the Landon Center: (1) "Long-Term-Care Planning," presented by Jill Watskey, J.D., Nov. 27, Noon-1:00 p.m.; (2) "The Heart of the Season: Stories of Giving, Receiving, and Connecting," presented by Ron Zoglin and Deborah Shouse, Dec. 5, Noon-1:00 p.m. Visit the Landon Center website: [www2.kumc.edu/coa](http://www2.kumc.edu/coa).

### Beware of internet scams

There are lots of fraudulent scams on the Internet. If you do not recognize the sender of an e-mail and/or if there is a statement that sounds too good to be true, it probably is SPAM and should be deleted. Do not e-mail sensitive personal information, i.e. Social Security number, passport number, bank account and credit card numbers, etc. Reputable companies will never solicit such information through e-mail.

## Rosedale History Quiz

In each issue of The Rosedalian, there will be a historical photograph of a place in Rosedale along with an accompanying question. The first person to answer the question correctly will receive a prize. Submissions must be e-mailed to: [rosedalehistoryquiz@yahoo.com](mailto:rosedalehistoryquiz@yahoo.com) or called in to the RDA office: (913) 677-5097. Please provide your name, address, and phone number.

### Last month's photograph & question:

**Question:** What was the name of this Rosedale business and where was it located?

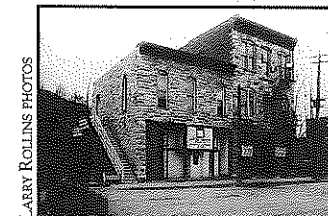
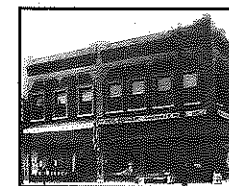
**Answer:** George Gerner Grocery, located at 900 Southwest Blvd. The building was later sold to Strasser Hardware, but was torn down in 1987.

**Winners:** No one answered the question correctly this month.

### This month's photograph & question:

**Question:** What was the name of this building?  
*Hint: This picture was taken in 1910.*

The answer will be provided next month.



LARRY ROLLINS PHOTOS

## Thank you to our wonderful volunteers

Seven youth and two adults from Notre Dame de Sion High School in Kansas City, Mo. spent three hours on Oct. 17 cleaning RDA's storage vault in the Koch Center. The volunteers sorted through board games and craft supplies, picked up and threw away trash, and organized the items in the vault.

Eight undergraduate social work students from the University of Kansas helped winterize the home of an elderly Rosedale couple on Nov. 10.

## Halloween Blood Drive Results

RDA hosted an American Red Cross blood drive for the Rosedale area on Oct. 31 – Halloween – sarcastically labeled the "Vein Drain." This was the first time RDA had hosted a blood drive. Many thanks to the Red Cross volunteers and those who donated blood. Your efforts will help many patients across the Kansas City region.

Thirteen people donated blood (10 were first-time donors), and 12 productive units were collected.

## Membership application

Annual business dues: \$100 Annual household dues: \$15

Name of business or name of household

Address

City

State

ZIP code

Contact person

Day phone

Evening phone

Fax

E-mail address

Please mail application, along with check made payable to:  
Rosedale Development Association  
1403 Southwest Blvd.  
Kansas City, Kan. 66103

Sunday - Thursday  
11 am - 12 am

**JAYWALKERS**  
SPORTS BAR & GRILL

Friday - Saturday  
11 am - 2 am

**10% OFF**

We would like to offer you **10% off your entire food bill.**  
(dine in only, coupon must be present)

**Come watch College Football and the NFL Ticket!**

[www.jaywalkersbar.com](http://www.jaywalkersbar.com)  
(913) 671-PHOG  
fax: (913) 671-7624

Host your next event at Jaywalkers! Or ask about our catering.  
3916 Rainbow Boulevard • Kansas City, KS 66103