

The Rosedalian

ROSEDALE DEVELOPMENT ASSOCIATION NEWSLETTER

RDA announces 2007 business and volunteer award recipients

At its December Board of Directors meeting, RDA presented its Business Partner of the Year Award and Volunteer of the Year Awards, recognizing exceptional contributions to the Rosedale community during the past year.

The Business Partner of the Year was **Westwood Apple Market**, our local grocery store, which among other things, often donates food at cost or gratis for a variety of youth programs and other community events in Rosedale. Whenever RDA or other community organizations ask for help, Westwood Apple Market responds immediately and without hesitation. Even though it is not technically located in Rosedale, this civic-minded business is a true friend of the Rosedale community.

There were four recipients of the Volunteer of the Year Award: **Derek Lysinger, Pat Milburn, Leona Kallaras, and Elizabeth Johnston.**

Derek is a cheerful 14-year-old who spent many hours in 2007 working on minor home repair projects and other volunteer efforts around Rosedale.

Pat and Leona faithfully volunteer to fold, tape, and label *The Rosedalian* every month, saving RDA hundreds of dollars each year.



RDA's Volunteers of the Year (from left to right): Derek Lysinger, Pat Milburn, and Elizabeth Johnston. Not pictured: Leona Kallaras. For a complete listing of RDA's volunteer opportunities, visit our website: www.rosedaleassociation.org/volunteer.htm.

Elizabeth is RDA's "go-to" graphic designer; she created RDA's current logo, volunteer brochure, and 2006 Annual Report. She also does the design and layout for *The Rosedalian* every month.

We could not fulfill our mission of building a strong and healthy Rosedale

without the generosity and giving spirit of our volunteers. You are critical to RDA's work. Last year, more than 300 volunteers joined RDA on various projects and tasks.

To the award recipients and all of our other partners and contributors, thank you for a great 2007! ☑

Turkey Creek flood control update

Last July, the Unified Government Board of Commissioners voted to continue funding its portion of the Turkey Creek Flood Mitigation project from the U.G. General Fund. Two weeks before, several commissioners had questioned the need for the U.G. to help fund this \$92 million project. As the vote was taken, Mayor Joe Reardon asked city staff to come up with alternative means of funding the project,

including the possibility of a special tax on impacted properties.

A few weeks later, the Commissioners met with staff to discuss funding alternatives for the project. Staff presented eight funding methods that are legally available to the city. After much discussion, the consensus was that the U.G. needed to be fair and have

Continued on next page ►

Rosedale Businesses of the Month

"Adopt-a-Family"

Thank you to employees of the following local businesses for "adopting" Rosedale families this past holiday season. RDA recognizes these businesses for their generosity in helping these families obtain needed food, household supplies, and Christmas gifts for their children. It is a testament to the strength of Rosedale that members of the community help each other in times of need. Thank you so much!

Damage Control & Restoration, Inc.

General contractors specializing in insurance restoration.

Repair of residential and commercial property damaged by fire, wind, water, ice, etc.

413 Division St.
Kansas City, Kan. 66103
(913) 722-0228
www.dcrikc.com

Red Eye

Drinking establishment.

6102 State Ave.
Kansas City, Kan. 66102
(913) 334-6700

John Rohrer Contracting Co.

Full-service concrete contractor.

2820 Roe Lane, Bldg. S
Kansas City, Kan. 66103
(913) 236-5005
www.johnrohrercontracting.com

Kansas City Winnelson Co.

Plumbing materials and supplies.

Heating and cooling equipment.

1529 Lake Ave.
Kansas City, Kan. 66103
(913) 262-6868

Fraternal Order of Police Lodge #4

Law enforcement labor organization, representing the needs and interests of KCKPD officers.

7844 Leavenworth Rd.
Kansas City, Kan. 66109
(913) 788-4367



1403 Southwest Blvd.
Kansas City, Kansas 66103

RETURN SERVICE REQUESTED

Non-Profit Org.
U.S. Postage
PAID
Permit No. 233
Kansas City, KS

Happy New Year!

On behalf of the RDA staff and Board of Directors, we wish you the best in 2008. We eagerly anticipate working with many of you in continuing to pursue our mission of building a strong and healthy community and improving the quality of life for those who live, work, and play in Rosedale.

► *Continued from last page*
 a policy not only for funding Turkey Creek improvements but other KCK storm water runoff projects as they arise. At this time, RDA has not heard any further discussion or funding proposals from the city.

As for the project itself, the first 200 feet of tunnel work is complete. The goal is to have all tunnel work finished by July 2008. Sometime this month, a new bridge will be assembled for the railroad crossing over the creek near Southwest Blvd. (the 3.8 crossing).

R.O.C.K. program concludes successful first semester

RDA's newest program, R.O.C.K. (which stands for "Rosedale Organization for Community Kids"), wrapped up its first semester in operation with a Family Fun Night on Dec. 13. Nearly 40 people – youth participants, parents, siblings, relatives, volunteers, and staff – attended the event.

R.O.C.K. is a weekly after-school program for 11-15-year-olds. The program, which currently has 12 youth enrolled, engages youth in group and individual activities that are designed to teach teamwork, integrity, respect, self-esteem, appropriate conflict resolution, and social skills. There are also occasional field trips and guest speakers.

In preparation for Family Fun Night, the youth and staff made lots and lots of cookies, including several dozen each of chocolate chip, oatmeal raisin, and peanut butter. The youth also decorated pre-made sugar cookies. Later, after parents and other relatives arrived, everyone enjoyed the cookies and drank milk and hot chocolate.

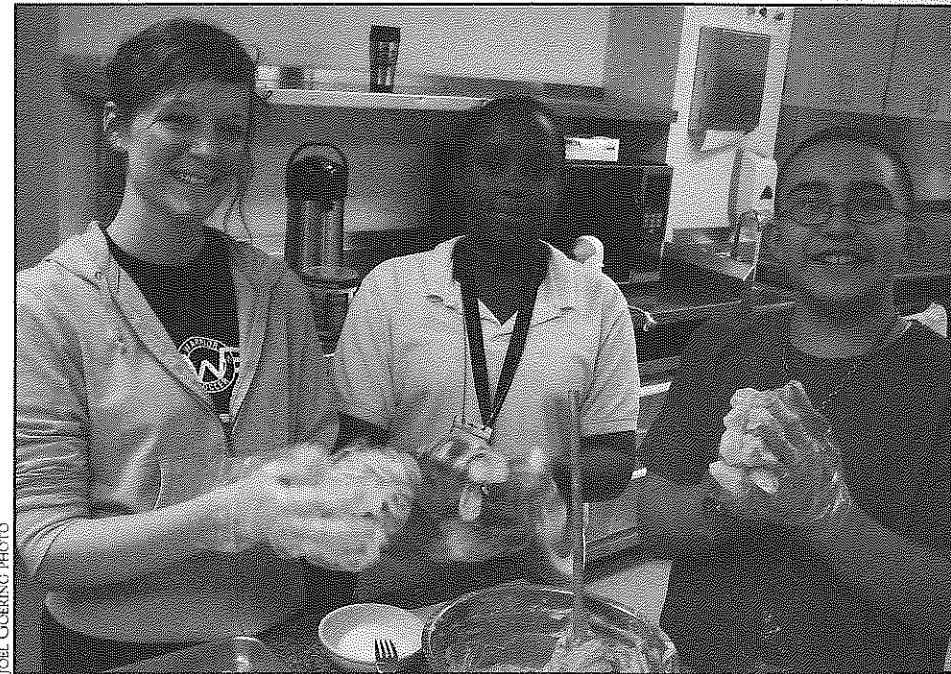
Staff and youth also talked with parents about the R.O.C.K. program – its purpose, structure, and typical weekly activities. Parents learned about the "Full-Value Contract," which is a set of mutually agreed-upon rules and guidelines for the group's time together. The youth also demonstrated one of the games they play – "Grab the Tails," which is essentially a modified form of tag – and then, everyone – parents included – participated in an initiative activity called "Balloon Trolley."

R.O.C.K. grew out of the former Rosedale Youth Academy and Rosedale Knights Chess Club, both of which are

Several new ideas have been proposed for the Mill Street road bridge over the creek and associated channel that would result in huge project cost-savings. As work continues, the old rail yard will include a walking trail and environmental enhancement. Still in the overall plan, but several years away from construction, are the hillside interceptors. Engineering on these should begin in 2008. For more detailed information on the Turkey Creek project, call the RDA office: (913) 677-5097. ☎

— Wendy Wilson

no longer functioning. Sensing that there was still a need in the Rosedale community for a quality after-school program, especially for middle-school-aged children, RDA planted the seeds for a new program. Thanks to new volunteers and a new vision, the R.O.C.K. program was born.



Sara DeLine, Champagne Ford, and Aneva Garza enjoy making cookies during the R.O.C.K. program's Family Fun Night. Sara is a student at the University of Kansas Medical Center, while Champagne is a sixth-grader at Rosedale Middle School and Aneva is a sixth-grader at Holy Name School.

R.O.C.K. is being evaluated through a participant survey, which was given to the youth at the beginning of the program last October and will again be given at the end of the program next May. The hope is that the evaluation will show the effectiveness of R.O.C.K. in improving self-esteem and social skills

ROSEDALE DEVELOPMENT ASSOCIATION

Working in partnership with residents, businesses, and institutions to build a strong and healthy community and to improve the quality of life for those who live, work, and play in Rosedale.

1403 Southwest Blvd.
 Kansas City, Kan. 66103
 Phone: (913) 677-5097
 Fax: (913) 677-3437
 www.rosedaleassociation.org
 Monday-Friday, 9 a.m.-5 p.m.

Wendy Wilson, Executive Director
Linda Wright, Office Manager
Joel Goering, Community Organizer

Board of Directors,
 www.rosedaleassociation.org/
 who_board.htm

Newsletter design by Elizabeth Johnston, Lizzardbrand Inc.,
 www.lizzardbrand.com



The impressive Boulevard Row town homes offer new housing choices in the heart of Rosedale. To learn more, visit: www.urbancoeur.com/blvd.html.

Boulevard Row taking shape along Rainbow Blvd.

Perhaps you have seen it while driving past on Rainbow Blvd., just north of 45th Ave. — a brand-new housing development located on one of Rosedale's main thoroughfares: Boulevard Row, consisting of 12 unique town homes and flats. This is an exciting development for Rosedale. Along with the new Mission Cliffs homes west of the University of Kansas Medical Center, Boulevard Row represents significant new investment in our community and promise for the future.

Boulevard Row is a project of Urban Coeur Development, a Kansas City-based developer of other successful residential projects. During the planning and zoning phase of the project, RDA played a critical role in bringing neighborhood residents to the table to ensure a high-quality, top-notch project. Urban Coeur deserves credit for incorporating residents' suggestions and having the vision to invest in Rosedale.

The units are available for purchase or lease-purchase. Two bedroom flats start at \$154,950, while the town homes start at \$249,950. Incentives include: 10-year property tax abatement, closing-cost rebate, and 1-yr. membership at the nearby Woodside Tennis & Racquet Club. For tours or for more information, contact ReMAX's Mike Schmidt: (913) 980-6453. ☎

Rosedale History Quiz

In each issue of The Rosedalian, there will be a historical photograph of a place in Rosedale along with an accompanying question. The first person to answer the question correctly will receive a prize. Submissions must be e-mailed to: rosedalehistoryquiz@yahoo.com or called in to the RDA office: (913) 677-5097. Please provide your name, address, and phone number.

Last month's photograph & question:

Question: What was the name of this building? *Hint: This picture was taken in 1910.*

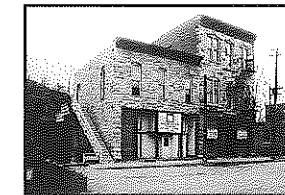
Answer: McGeorge's Hall, which was located at 1205 Southwest Blvd. The photograph was taken in about 1910.

Winners: No one answered the question correctly this month.

This month's photograph & question:

Question: Identify the institution that at one time operated in this building, located near 43rd Ave. and Mission Rd.

The answer will be provided next month.



Winterize your home

As in past years, RDA again has home winterization kits available to those who qualify (low- to moderate-income residents, as well as those on fixed incomes). The kits will help homeowners save on heating and other energy bills this winter. If you would like one of the kits, contact the RDA office: (913) 677-5097.

The kits contain a variety of tools and materials to improve insulation in older and substandard homes,

including: plastic sheeting to cover windows and doors, rope and acrylic caulking to seal cracks, and switch plate insulators to help stop cold-air drafts. The kits also contain compact fluorescent light bulbs and an energy-saving tips guide.

Homeowners may install the kits themselves or they may call upon volunteers at the United Way of Wyandotte County for assistance. This winterization program is sponsored by the Kansas Warm Homes Project. ☎

Membership application

Annual business dues: \$100 ☎ Annual household dues: \$15

Name of business or name of household _____

Address _____ City _____ State _____ ZIP code _____

Contact person _____

Day phone _____ Evening phone _____ Fax _____

E-mail address _____

Please mail application, along with check made payable to:
 Rosedale Development Association
 1403 Southwest Blvd.
 Kansas City, Kan. 66103

Rosedale Business of the Month

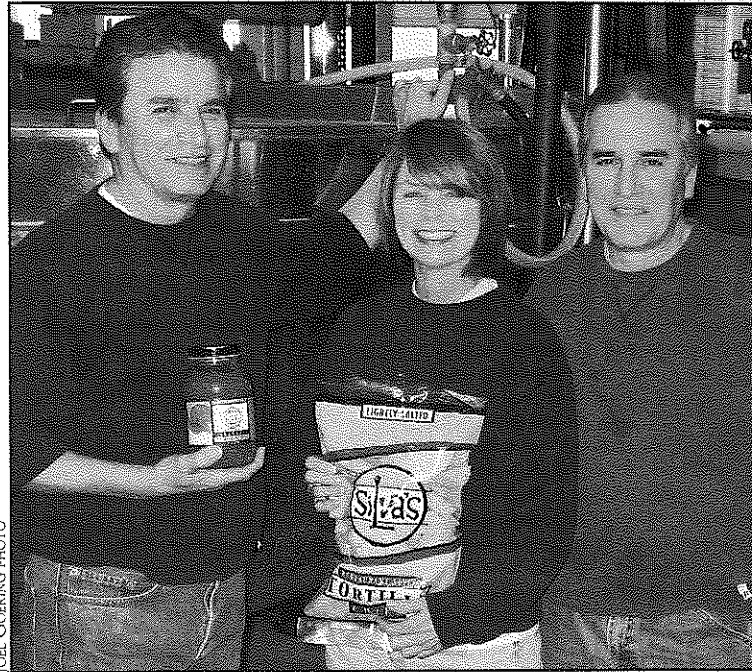
Silva Foods

Address: 2540 W. 47th St., Kansas City, Kan. 66103, Phone: (913) 432-6166

Though it may be small, Silva Foods has earned a significant following in the Kansas City area due to the quality of its products and customer service.

Silva's main product lines of taco sauce, chunky salsa, bean dip, tortilla chips, tortillas, spices, and sauce mix can be found in grocery stores, school districts, and restaurants throughout the region. The tasty and appetizing varieties are a big hit with customers.

The company has been in business for nearly 30 years, all of which have been spent in the same Rosedale location on 47th St. Silva's is proud to be a local, family-owned business. In fact, the company grew out of two restaurants operated by Esther Silva, the now-90+-year-old family matriarch. Many of the salsa and sauce recipes used by Silva's are the same that Esther used at her restaurants.



JOEL GOERING PHOTO

Ernie, Kathy, and Bob Fernandez show off some of their handywork at the Silva Foods production factory in Rosedale. Nachos, anyone?

Silva's is currently operated by Ernie, Bob, and Kathy Fernandez, who are part of the Silva family. Every day, they arrive early in the morning and begin the process of making chips,

salsa, and the company's other goods. They contract with another company to handle sales and distribution; they want to focus solely on production.

The company has enjoyed its time in Rosedale. "Rosedale is in the middle of everything," said Bob Fernandez. "It's an excellent location," added Kathy.

With only three employees, Silva's is able to form intimate and honest relationships with its clients, and respond quickly to questions and requests. "Because we're small, we can develop

one-on-one relationships," said Kathy. "We always call people back and we're easily approachable."

The next time you host a party or when you're craving a delicious snack, go to your nearest grocery store and look for Silva's chips and salsa. You will not be disappointed. ☑

Non-Profit Org.
U.S. Postage
PAID
Permit No. 233
Kansas City, KS



The Rosedalian

ROSEDALE DEVELOPMENT ASSOCIATION NEWSLETTER

Weak state law encourages scrap metal thieves

A recent incident in our community brought to my attention the lax rules and enforcement measures that govern the sale of scrap metal in the KCK area. Just this past year, the Kansas legislature passed a law in an attempt to regulate private companies that buy scrap metal from individuals. As initially proposed, the law did have some teeth to it, but due to the scrap metal industry's involvement, the law was watered down so as to become almost worthless.

Late last year, 120 speakers and a truck were stolen from the Boulevard Drive-In here in Rosedale. Within a few days, the KCK Police Department (KCKPD) discovered the speakers had been sold as scrap to National Compressed Steel (NCS) in Armourdale. The law passed last year requires the scrap dealer to take a copy of the driver's license of anyone wishing to sell scrap metal worth more than \$50. In this instance, NCS did take a copy but it was not the license of the person selling the speakers so they did not follow the law and their own procedures.

In January, I accompanied the owner of the Drive-In, Wes Neal, and a KCKPD Detective to retrieve the stolen speakers from NCS. Not only had NCS not followed policy to obtain the correct ID of the seller, they had also shipped the speakers out by mistake! This is after they were made aware the speakers were stolen and the owner wanted them back. Everyone made money on this deal except Mr. Neal. When I asked NCS if they were going to reimburse Mr. Neal, I was told that they should not be talking to me. At this time, Mr. Neal has not been compensated for his loss.

The commercial fencing of stolen scrap metal comes at a huge cost to our community. It impacts homeown-

ers and businesses through increased insurance rates. Utilities are affected, as well, forcing them to raise rates to cover expenses incurred from theft. Our police department must spend countless hours investigating the many reports of stolen metal, costing taxpayers and diverting police resources away from other crime prevention efforts.

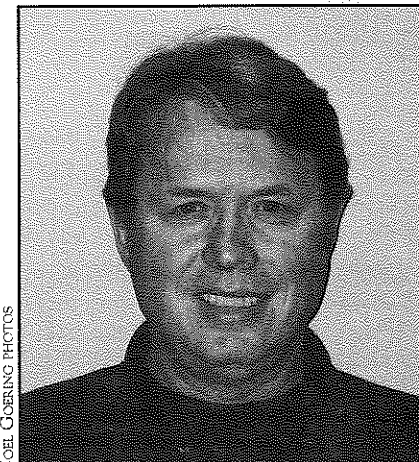
Many other states have enacted much more restrictive laws in an attempt to quell some of the scrap metal thefts. The current Kansas law is available on the legislature's website: www.kslegislature.org. Look for Bill No. 2035. Also,

check out the Conference Committee Report Brief for background information and for detail on what provisions were removed from the adopted law.

RDA will be working with others to address this problem, but you can help, too. I encourage you to contact your state senator and representative and ask them to close the loopholes in the law that was passed last year and to toughen regulation of the scrap metal industry. If you don't know who your senator or representative is, visit the legislature's website: www.kslegislature.org.

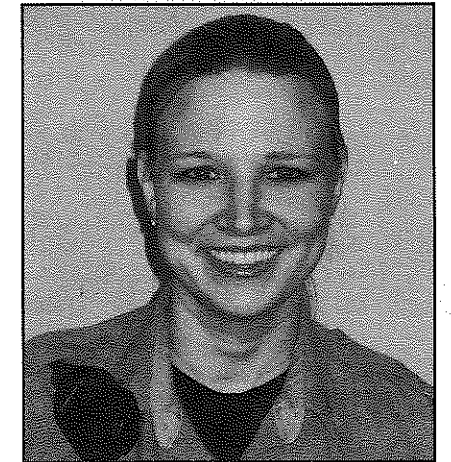
—Wendy Wilson

Our new partners in fighting crime and blight



JOEL GOERING PHOTOS

Robert Morgan is the new U.G. Code Enforcement Officer for district #335 in Rosedale (north of I-35, east of 18th St. Expressway, south of Kansas River). Rob has been in code enforcement since Nov. 2005. Prior to that, he served as the bartender on Sen. John Kerry's airplane during the 2004 presidential campaign.



Amy Allen is the new COPPS officer (community policing) for district #335 in Rosedale. Officer Allen, a KCK native, has been with the KCK Police Department since 1996. She worked in the nighttime community policing unit for about six months before starting her current position.



1403 Southwest Blvd.
Kansas City, Kansas 66103

RETURN SERVICE REQUESTED

Your new Rosedale Development Association Board members

At its December meeting, the RDA Board of Directors approved the slate of nominees and officers to the board for 2008. In addition, the community elected two new board members to represent the business and residential sectors.

Officers for 2008 are: **Stevie Reynolds** (President); **Brian Hedrick** (Vice-President, Business); **Robert Kaufman** (Vice-President, Residential); **Todd Navrat** (Treasurer); and **Paul Davidson** (Secretary).

For a complete list of current board members, visit: www.rosedaleassociation.org/who_board.htm. Below are brief profiles of our new board members:

Phillip Kaser is a new member of the Rosedale community, having recently become the Banking Center Manager at Bank Midwest's Rosedale branch. His specialty is in commercial lending and public relations. Prior to moving to the Kansas City area, Phillip worked for U.S. Bank in southeast Missouri. He says, "Rosedale is very important to me and I feel it is a great community. I will bring a very positive, optimistic, and energetic attitude to RDA." Phillip will represent the business community.

John Mendez is a former Unified Government Commissioner for the 3rd district (the district that includes Rosedale) and is currently a professor at Don-

nelly College. A life-long KCK resident, John has worked in public service for 41 years. He and his wife recently moved to the new Mission Cliffs housing development in Rosedale. John is passionate about bringing his skills and connections to RDA: "With my experience in the public sector, I know what the issues are [in Rosedale and KCK] . . . I'd like to help address those issues."

Elizabeth Johnston is the President/Art Director of Lizzardbrand Inc., a graphic design and marketing firm. She moved to Rosedale to join her husband

(an 18-year Rosedale resident) four years ago. Elizabeth has donated countless hours to RDA, designing the *Rosedalian* each month, RDA's award-winning volunteer brochure, logo, stationery items, Conflict Resolution Program logo and letterhead, and 2006 annual report. In describing her passion for volunteering, Elizabeth says, "If I didn't have to work for money, I would spend 100% of my time designing visual communications for nonprofits in need of image branding." Elizabeth will represent the residential community. ☐

Vehicle theft victims pay the price . . . twice

Have you had your vehicle stolen and later recovered by the Police Department, and then been told you will need to go to an area tow lot to retrieve it? At the tow lot, you are expected to pay for the tow and storage fees. Many feel victimized twice with this current process. The only winners are the thieves who enjoyed your vehicle and used it for their own gains. Many of them know there is little chance they will be caught and prosecuted for this crime. Unless the police actually catch the thief in the car, the consequences are minor.

For you, the victim, the consequences can be major. If you are a single parent trying to get your child to daycare and yourself to work without a car, it can be almost impossible. How do you afford the tow and storage fees, not to mention the likely repairs to your vehicle? Many owners can only afford to carry liability insurance that will not cover the fees or repairs.

This is how the current process works: the U.G. contracts for services from tow lot operators. The contract does not address who is responsible for the tow and storage fees, although someone must pay. It does permit the KCK Police Dept., through a Captain or higher-ranking officer, and the Wyandotte County Sheriff or Under-sheriff to release vehicles without charges. The KCKPD has an internal policy that regulates if, when, and to whom fees may be waived. Currently, the policy is to waive the fees if the vehicle tow report reflects it was towed as evidence

in a crime. This is not indicated on many tow reports. If the KCKPD can reach you to pick up your vehicle at the time they locate it, then it will not be towed at your expense; otherwise, you can expect to pay.

I feel that the current process is unfair to the victims. I have spoken with one of the U.G. attorneys about this issue and she promised to make her best effort to negotiate a better outcome for the victims whose vehicles are stolen and recovered in KCK. The current contract expires in Dec. 2008. ☐

—Wendy Wilson

Rosedale Obituaries

Robert J. Sherman, 69, a long-time Rosedale resident and community member, died on Nov. 30. Memorial services were held on Dec. 4 at Maple Hill Funeral Home. Robert, or "Bob" as most people called him, was active in the Rose Alert neighborhood group and was known for his vigilance in protecting the neighborhood from crime and blight. He was a member of RDA, as well. Rosedale will miss him.

Jacqueline "Jackie" M. Sullivan, 79, passed away Jan. 4. Jackie was a devoted wife, mother, grandmother, and great-grandmother. She lived in Rosedale for many years and was an active member of the Sharing Community in Rosedale, Rosedale Christian Church, and Rainbow Mennonite Church. She volunteered at the Argentine food kitchen. Memorial services were held at Rainbow Mennonite Church on Jan. 12.

Rosedale Briefs

Attention seniors, get your utility tax rebates now

Senior citizens in Kansas City, Kan. are eligible to receive a refund on a portion of the amount paid for utilities in 2007. Applicants must be 65 years of age during the entire year of 2007, live in KCK, and their total income must not exceed \$25,000. The maximum refund is \$300.00. The deadline to apply is March 31. Applications will be taken at the Municipal Office Building East (701 N. 7th St.). Eligible persons should bring all gas, telephone, and BPU bills paid during 2007; proof of income, Social Security statements; interest statements, and Social Security number. For more information, call: (913) 573-5260.

Crime prevention resource

One of the best ways to prevent crime is to be aware of your surroundings and to get to know your neighbors. To assist in this process, the National Sex Offender Registry is available online. Visitors to the website can type in an address and locate registered sex offenders living nearby. As the website says, "Awareness is your best defense." Go to: www.familywatchdog.us.

It's tax time!

The KC CASH Coalition provides free tax preparation for basic federal and state returns and free electronic filing for taxpayers with incomes less than \$40,000. There are two KCK locations for this service: (1) Catholic Charities/EI Centro, Inc., 2220 Central Ave., Thursdays, 5:00-8:00 p.m., Saturdays, 9:00 a.m.-3:00 p.m.; (2) KCK Community College, 7250 State Ave., Wednesdays, 5:00-8:00 p.m., Saturdays, 9:00 a.m.-Noon. For additional information, contact United Way: (816) 474-5112.

Talking trash

Join an important community discussion on recycling, trash costs and landfill capacity on **Feb. 25, 6:30-8:00 p.m.**, at the Best Western Inn & Conference Center (**501 S.W. Blvd.**). Our region's landfills have less than 20 years left until they close. What can we do to lengthen their life spans? One KC Voice, a citizen engagement program supported by the Mid-America Regional Council, wants to hear your ideas. Your feedback will be given directly to the Unified Government to help it develop waste-reduction programs. For more information, visit www.onekcvoice.org or call: **(816) 701-8269**.

Rosedale History Quiz

In each issue of *The Rosedalian*, there will be a historical photograph of a place in Rosedale along with an accompanying question. The first person to answer the question correctly will receive a prize. Submissions must be e-mailed to: rosedalehistoryquiz@yahoo.com or called in to the RDA office: (913) 677-5097. Please provide your name, address, and phone number.

Last month's photograph & question:

Question: Identify the institution that at one time operated in this building, located near 43rd Ave. and Mission Rd.

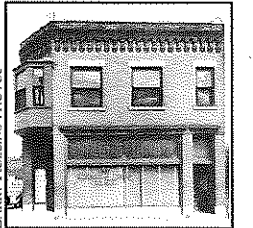
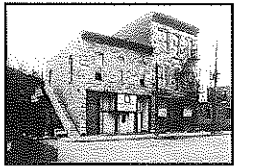
Answer: Life Line Children's Home.

Winners: Several people answered correctly. Pat Milburn was first, followed by Sharon Hill, Claudette Patterson, Bob O'Neal, and Harold Hepfer.

This month's photograph & question:

Question: Name the business that was once housed in this building. The address was 722 Southwest Blvd. (currently Boulevard Tires).

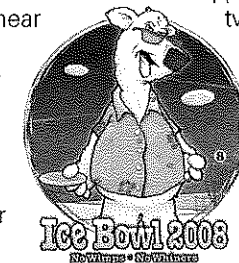
The answer will be provided next month.



"Is that a Frisbee®?" Close. It's called a disc. And the name of the game is Disc Golf. Did you know Rosedale is home to the best two disc golf courses in the Kansas City area and they are both located at Rosedale Park (near 42nd and Mission Rd.)?

Disc Golf is played very similarly to regular ball golf. There are putters, drivers, and mid-range discs. The goal is to get your disc into a basket 200-500 feet away in the fewest number of throws.

Last month, Rosedale Park hosted the Ice Bowl tournament. Great weather on a Sunday afternoon



brought out more people than expected for an overall turnout of 250 players and supporters. A \$15 entry fee paid for two rounds of disc golf, a commemorative disc, and all the chili you could eat at the chili contest. \$4,000 in proceeds went to the Bishop Sullivan Center and the FLHW Foundation.

Don't miss out on the next tournament scheduled at Rosedale Park on May 3, 2008.

To learn more about Disc Golf or any of the other 15 Kansas City courses, go to www.kcfdc.org

Membership application

Annual business dues: \$100 ☐ Annual household dues: \$15

Name of business or name of household

Address City State ZIP code

Contact person

Day phone Evening phone Fax

E-mail address

Please mail application, along with check made payable to: Rosedale Development Association
1403 Southwest Blvd.
Kansas City, Kan. 66103

ROSEDALE DEVELOPMENT ASSOCIATION

Working in partnership with residents, businesses, and institutions to build a strong and healthy community and to improve the quality of life for those who live, work, and play in Rosedale.

1403 Southwest Blvd.
Kansas City, Kan. 66103
Phone: (913) 677-5097
Fax: (913) 677-3437
www.rosedaleassociation.org
Monday-Friday, 9 a.m.-5 p.m.

Wendy Wilson, Executive Director
Linda Wright, Office Manager
Joel Goering, Community Organizer

Board of Directors,
www.rosedaleassociation.org/who_board.htm

Newsletter design by Elizabeth Johnston, Lizzardbrand Inc.,
www.lizzardbrand.com