

Rosedale Business of the Month

Matthew Dehaemers

Website: www.matthewdehaemers.com

Matthew Dehaemers could be simply considered an artist, but that would be a great understatement. Through his sculptures and installments Matthew becomes a storyteller by incorporating the community, history and unique materials. "I usually spend up to two times longer in the library than actually working on the piece." This commitment to history shows itself in the power of his projects. The history of a place guides him to the media he will use and the scope of the project. Engaging the community to take an active part in the process has become a signature mark of Matthew's work. He feels his art is not successful unless others, particularly those who do not consider themselves artists, participate and support his work. Matthew works to insure his art is easily assessable and as tangible as possible to encourage people to find their own meaning in his art.

Some of Matthew's most memorable projects have been a suspended "Ghost" Street car in downtown



Avenue of the Arts — Kansas City, Missouri "Point of Departure" (Ghosted 1920's cable car suspended over the street)

KCMO and his latest installation in Evanston, IL, was a collaborative effort with the community to create 16 foot-long bottles from individual plastic bottles. Each was filled with small plastic sheets with messages written by the public. The historical significance is what makes Matthew's installa-

tions so powerful. In 2006, Matt worked on a project in Omaha which focused on the 1919 events of William Brown's lynching. Writing with chalk on his hands and knees for over a mile, Matthew transcribed the non-biased account of that horrific night. He started at the original location of where Brown was taken and finished at the spot where he was finally killed and his body burnt. Matthew finds that looking to the historical events of an area's tension, whether they are racial or social, brings out the most powerful product.

Matthew, and his wife Shayla, have lived in the Hanover Heights neighborhood of Rosedale for the past three years and in the Kansas City area for most of their lives. He is encouraged to see the art community growing in Kansas City and expanding into Rosedale. Matthew loves Rosedale because of the great neighbors, respect for homes, and easy access to the KC metro area. Please go to www.matthewdehaemers.com for more pictures and to view his latest projects. ☞



The Rosedalian

ROSEDALE DEVELOPMENT ASSOCIATION NEWSLETTER

Early Bird Gets the Worm in Rosedale

By Angel Dew, Social Change Artist and student at Emporia State University

I've never been one to rise early in the morning; I take great delight in sleeping in, but this past September, on several occasions, I found myself up at sunrise en route to a hospital perched on a hill.

The drive from Overland Park to KU Medical Center would usually take just under 15 minutes. I was guided around the pitter-patter of morning traffic by a scientist, who swore to the quickest path — I-35 to the Mission Rd. exit, up the hill to 42nd St., quick left onto 42nd St., down to Rainbow, quick left on Rainbow . . . and voila'.

The crossroad at 42nd and Mission Rd. would often hinder this quickness.

Due to the pause for traffic, I couldn't help but notice the empty lot with a large retaining wall sitting so unfulfilled on the corner. What a perfect place for a mural, yes?

The scientist agreed and went on, as scientists do, to tell me exactly what to do: get in touch with some of the movers and shakers in Rosedale.

Rosedale? Where's Rosedale?

The scientist paused a bit, squinted his eyes, spun his fingers around, and said, "this, all of this, is Rosedale."

I'd worked at the library at the medical center for nearly two years and had not once realized the name of the community at which it sat.

This realization lit a spark, and anyone who really knows me, knows that I am unable to ignore such sparks. I wondered how many others attending school and working at the medical center were unaware of this. I wondered what I could do to change the emptiness of that lot. I wondered who the movers and shakers were in Rosedale? It didn't take me long to find The Rosedale Development Association.



Adults and youth working together to create something beautiful. Thanks to all who participated!

Visiting the Rosedale Development Association for the first time is a moment I will never forget. I left knowing that the lot at 42nd street and Mission Rd. would stand no longer as it had for a long time — empty.

The Only Constant is Change

The project unfolded over 'old man' winter. The beginning stages were 'change' sessions of *how who what why and where*. Wendy established approval from the lot's owner. Joel scheduled a meeting with Sylvia from the Downtown Shareholders that does murals throughout Kansas City. Sylvia introduced us to Joe Faus, an amazing artist who has done several murals with their organization. And Mikey and I sat together and dreamed up ideas for the lot's future.

From the beginning we knew that this project would be a youth driven endeavor as well as a beautification

venture in terms of the property. It's no secret that a community is reliant on its surroundings, changing the ascetics both on the wall and on the property would undeniably change the feel of the community. It is also no secret that the youth in any given community are the future. Connecting the two seemed incessantly important to maximize the effect of our desired change.

Join Hands Day

This May we had our first event out at the lot. The event was called Join Hands Day and it was sponsored by the Thrivent Financial for Lutherans. On three separate days, with a total of 16 community volunteers, seven of which were youth, we cut down damaged trees, painted a sign detailing the coming mural, primed the wall, and planted a flower and bush garden.

Passersby honked and wailed as they slowed to see . . . what was plain to see: change in Rosedale, Kan. ☞



1403 Southwest Blvd.
Kansas City, Kansas 66103

RETURN SERVICE REQUESTED

Non-Profit Org.
U.S. Postage
PAID
Permit No. 233
Kansas City, KS

Wellness Programs offered in Rosedale

By Lora Swartzendruber, KU Masters of Social Work Intern with Rosedale Community Project

This summer KU is offering various wellness classes, most free of charge. Programs include first aid and CPR, parenting classes, support groups, programs for older adults, and information on specific health issues and diagnoses, and are offered at four locations: KU Medical Center, The Landon Center, Westwood Campus, and KU MedWest. For more information and a list of all programs, visit www.kumed.com and click on "Be Well!" or call 913-588-1227. Some examples of programs are:

"Straight from the Heart" Mondays and Tuesdays, 3:30-4:30 p.m. at KU Center for Advanced Heart Care, White Heart Learning and Resource

Center Conference Room.

Learn about heart disease management, including information about cardiac recovery and risk reduction.

Older Adult Health: Brownbag Lunch Series, Wednesdays, Noon-1:00 p.m., The Landon Center, Room 200.

July 9: *Advocating for Yourself to Get the Best Health Care Possible*
July 23: *Mental Illness Through the Ages*
July 30: *CPR Instructions for Older Adults*

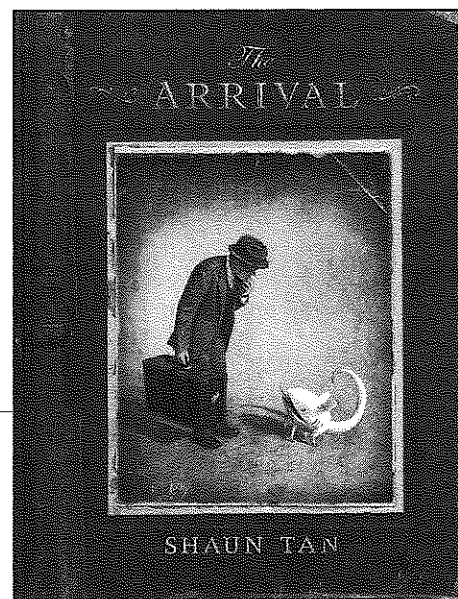
Older Adult Health: "Stretch and Balance" Mondays 1-1:45 p.m., The Landon Center, Room 260A.

* Registration is required at (913) 588-1227 or www.kumed.com. ☎

The Book Nook

By Angel Dew, 42nd Street Mural Project organizer

The Arrival by Shawn Tan is an amazing graphic novel full of sepia tones with no words — a metaphor really, of life as an immigrant. At the beginning of this novel, a man gives his wife and child a sweet kiss and boards a steamship to cross the ocean — embarking on the most painful yet important journey of his life — leaving home to build a better future for his family. With immigration being such a hot topic in our country, this book is a must read.



Two months before he died of cancer, renowned literary critic Anatole Broyard called his grown son and daughter to his side, intending to reveal a secret he'd kept all their lives and most of his own: he was black. *One Drop* was written by Anatole's 25 year old daughter Bliss, as a means to understand and explore her father's secret . . .

Check these books out at the Kansas City, Kan. Public Library. ☎

Call for submissions

The residents of Rosedale already have a voice, but the Rosedale Development Association would like to give you a microphone!

The RDA is inviting you to submit articles about what is going on in your part of Rosedale. Ideas for articles include:

- Thanking someone for doing something special
- Community issues
- Special events in Rosedale
- Special pictures of the community

Please send in your submissions. By sending in your article, we cannot assure you it will be published, but we will look at all submissions.

There are multiple ways for you to submit articles:

- E-mail articles to Mikey at mfletcher@rosedaleassociation.org.
- Regular mail them to Mikey at 1403 S.W. Blvd. Kansas City, Kan. 66103.
- Drop them off at our office. ☎

ROSEDALE DEVELOPMENT ASSOCIATION

Working in partnership with residents, businesses, and institutions to build a strong and healthy community and to improve the quality of life for those who live, work, and play in Rosedale.

1403 Southwest Blvd.
Kansas City, Kan. 66103
Phone: (913) 677-5097
Fax: (913) 677-3437
www.rosedaleassociation.org
Monday-Friday, 9 a.m.-5 p.m.

Wendy Wilson, Executive Director

Linda Wright, Office Manager

Mikey Fletcher, Community Organizer

Joel Goering, Community Organizer

Board of Directors,
www.rosedaleassociation.org/who_board.htm

Newsletter design by Elizabeth Johnston, Lizzardbrand Inc.
www.lizzardbrand.com

Rosedale Briefs

RDA has distributed over 800 Recycling bins to area residents so far. On our busiest day 63 individuals came in to pick up a bin. Whew! Bins will be available through July. Only one bin per household please.

The new railroad bridge over Turkey Creek at SW Blvd. is nearing completion. We will all be happy when this project is completed.

Several local businesses and volunteers worked together on 6/7/08 at the triangle of the Blvd. and Merriam Lane. Trash, brush and a lot of poison ivy was removed. We have more to do. If you wish to volunteer please call RDA office (913) 677-5097.

Freedom School started June 16 at the Rainbow Mennonite Church. The RDA wishes all the students a great summer of learning.

Free Events Calendar

- Every Friday until July 18 the Landon Center on Aging offers **free movie night with popcorn**. Shows start at 6:00 p.m. and go till 8:00 p.m.
- **Free concerts** are offered each Saturday night at the Legends Shopping area concerts go through August and start at 5:00 p.m.
- **Farmer's markets** are a great place to go for free entertainment. Check out the Merriam Farmer's Market and the City Market downtown on any Saturday morning.
- June 19 through June 22 at Kemper Arena the **Rib America Festival** will be coming through KC. Admission is free before 5:00 p.m. on Thursday and Friday, and 1:00 p.m. on Saturday and Sunday. Live music and food will be available. More info at www.ribamerica.com.
- **Free Blues festival** at 13th and State Ave. from June 27 through June 28. Local KC Blues artists will be in the streets performing for the public. More info at www.kckstreetbluesfest.com.

If you have any questions about these free events in the area, please contact Mikey at (913) 677-5097 or mfletcher@rosedaleassociation.org. ☎

Rosedale History Quiz

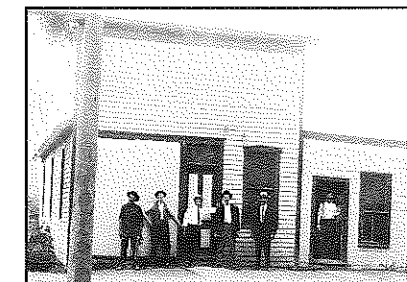
In each issue of *The Rosedalian*, we will publish a Rosedale historical photograph along with an accompanying question. The first person to answer the question correctly will receive a prize. Submissions must be e-mailed to: mfletcher@rosedaleassociation.org or called in to the RDA office: (913) 677-5097. Please provide your name, address, and phone number.

Last month's photograph and question:

Question: Name this building from Rosedale's early civic history.

Answer: Rosedale City Hall at 1156 Kansas City Ave. taken in 1912.

Winners: There were no winners this month.

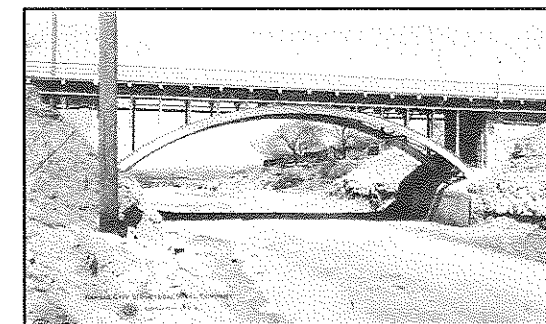


This month's photograph and question:

Question: This is an easy one for June.

Name the road this 1934 bridge crosses and which bridge it is.

The answer will be provided next month.



Membership application

Annual business dues: \$100 ☎ Annual household dues: \$15

Name of business or name of household

Address City State ZIP code

Contact person

Day phone Evening phone Fax

E-mail address

Please mail application, along with check made payable to:
Rosedale Development Association
1403 Southwest Blvd.
Kansas City, Kan. 66103

Rosedale Business of the Month

Sunshine Flowers

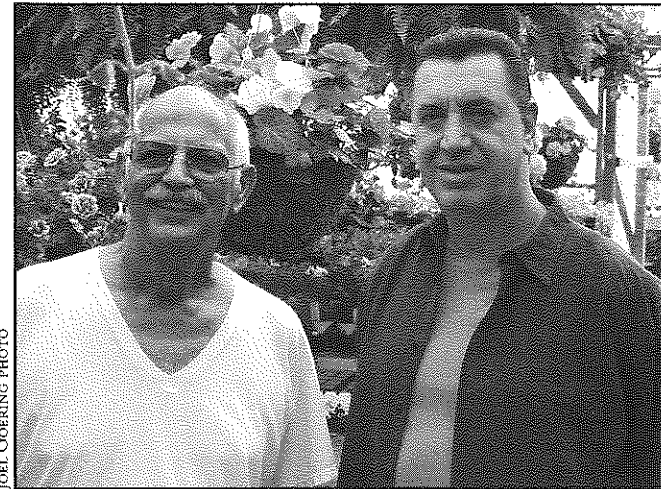
Address: 4509 Rainbow Blvd., Kansas City, Kan. 66103, Phone: (913) 384-5034,
Hours of operation: Mon.-Fri., 9:00 a.m.-7:00 p.m.; Sat., 9:00 a.m.-6:00 p.m.; Sun., 10:00 a.m.-6:00 p.m.

A common sentiment about Rosedale is that it's like "a small town in the midst of a big city." There are not many businesses that embody this feeling more than Sunshine Flowers, a locally-owned flower and garden shop on Rainbow Blvd.

Sunshine Flowers has been located in Kansas City, Kan. since the early 1970s, including the last 17 years here in Rosedale. It is a family business; nearly all of the employees are related. The company also prides itself on maintaining long-term relationships with its customers. Due to its relative small size, employees are able to offer one-on-one attention and high-quality customer service.

"Once they [customers] come, they keep coming back," says Butch Lipps, one of Sunshine Flowers' owners (Jerry Cammisano is the other owner). "Half of our customers are on a first-name basis. They like a little local place like this," he adds.

The spring months, especially



JOEL COOPER PHOTO

Co-owners Butch Lipps (left) and Jerry Cammisano stand ready to help customers at their popular flower and garden shop in Rosedale.

April and May, are the "peak" times for Sunshine Flowers, as people want to take advantage of the planting season. The company sells many varieties of flowers, vegetables, and herbs – the vast majority of which are locally-grown. Soil, fertilizer, mulch, and planting pots are also available for purchase.

During other times of the year,

Sunshine Flowers changes its inventory and sells other items. The company's annual schedule is as follows:

April-July: plants, flowers, vegetables and herbs

June 29-July 4: fireworks

Late Aug.-Nov.: mums and pumpkins

Late Nov.-Christmas: Christmas trees and poinsettias

Jan.-late March: closed

Sunshine Flowers has been an RDA member for many years. Lipps says the company enjoys being in the Rosedale community. Their location on

Rainbow Blvd. has served them well. When asked why Sunshine Flowers continues to support RDA and other community improvement initiatives, Lipps says, "I just think I should . . . I like to support the neighborhood."

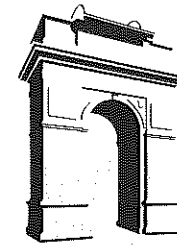
If the last 17 years are any guide, then the "small-town" neighborhood of Rosedale will continue to support Sunshine Flowers, as well. For all of your gardening needs this spring, choose local — choose Sunshine Flowers. ☺

Non-Profit Org.
U.S. Postage
PAID
Permit No. 233
Kansas City, KS



1403 Southwest Blvd.
Kansas City, Kansas 66103

RETURN SERVICE REQUESTED



The Rosedalian

ROSEDALE DEVELOPMENT ASSOCIATION NEWSLETTER

Curbside recycling comes to KCK

As part of Mayor Reardon's Green Initiative, the Unified Government will be implementing a curbside recycling program this summer. The program is scheduled to begin the week of June 23-27.

All homes (up to a four-plex) that receive residential trash service from Deffenbaugh and that are located within the city limits of KCK and Bonner Springs will have curbside recycling. The program does not include apartments or businesses.

Residents must have a green recycling bin in order to participate in curbside recycling. Neighborhood groups have the option of distributing recycling bins to their residents if they so choose. In addition, there was a coupon for a free recycling bin enclosed in customers' April BPU bill. Starting this month, residents can take the BPU coupon with them to get a free bin at the following locations:

- RDA office, 1403 Southwest Blvd., Monday-Friday, 9:00 a.m.-5:00 p.m.
- Recycling Center, 3241 Park Dr., Thursdays and Saturdays from 8:00 a.m.-1:00 p.m. and Fridays and Sundays from 11:00 a.m.-4:00 p.m.
- Neighborhood Resource Center at Liveable Neighborhoods in the lower level of 4601 State Ave., Monday-Friday, 8:00 a.m.-5:00 p.m.
- U.G. Annex, 8200 State Ave., Monday-Friday, 8:00 a.m.-5:00 p.m.
- Dial 3-1-1 or look on the U.G. website (www.wycokck.org) to find other locations where you can pick up a free recycling bin.

When curbside recycling begins, place your recyclables in your green recycling bin and place the bin at the curb weekly on your regularly sched-

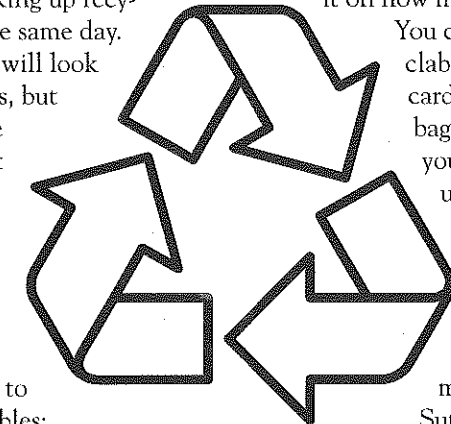
uled trash day. The green recycling bin signals the truck to stop, as Deffenbaugh will have a truck picking up recycling and trash on the same day. The recycling trucks will look similar to trash trucks, but all recyclables will be picked up together at the curb and taken to a facility where they are separated and processed. This is called "single stream" recycling.

You do not have to separate your recyclables; just place all your recyclables into the

same green bin. This will make it easy and convenient for you. There is no limit on how much you can recycle.

You can place extra recyclables in other containers, cardboard boxes or paper bags and put them next to your bin. Place cardboard under your bin. Keep your green recycling bin approximately 3-4 feet from your garbage, if possible.

For more information, contact Kirk Suther: (913) 573-8735 or ksuther@wycokck.org. ☺



RDA memberships pour in

Thank you to all of you who have become new members or renewed your membership with RDA for 2008.

With your support, RDA will be able to continue serving, providing access to resources, and advocating for the Rosedale community. Our wide variety of programs and initiatives — including neighborhood group support, after-school and summer youth activities, land-use planning, minor home repair and other volunteer projects, plus much more — depend on the financial commitment of our constituents — people like you.

For more information on how RDA is working for you each and every day, visit our website: www.rosedaleassociation.org.

It is not too late to become a member or to renew your membership for this year. Membership dues are \$15/year for households, and \$100/year for businesses. Please make checks payable to

"Rosedale Development Association" and mail to: 1403 S.W. Blvd. KC, KS 66103. You may also become a member or renew your membership online: www.rosedaleassociation.org/membership.htm. ☺

Thank you, Woodlands-TRAK East!

RDA received a \$5,000 grant from The Racing Association of Kansas (TRAK) East, based at The Woodlands Race Park, to help pay for supplies and materials for minor home repairs in the Rosedale community. The money will be especially critical to the Christmas in October program, RDA's annual minor home repair initiative in collaboration with KU Medical Center and KU Hospital. The grant period runs from April 1, 2008-March 31, 2009. Thank you!

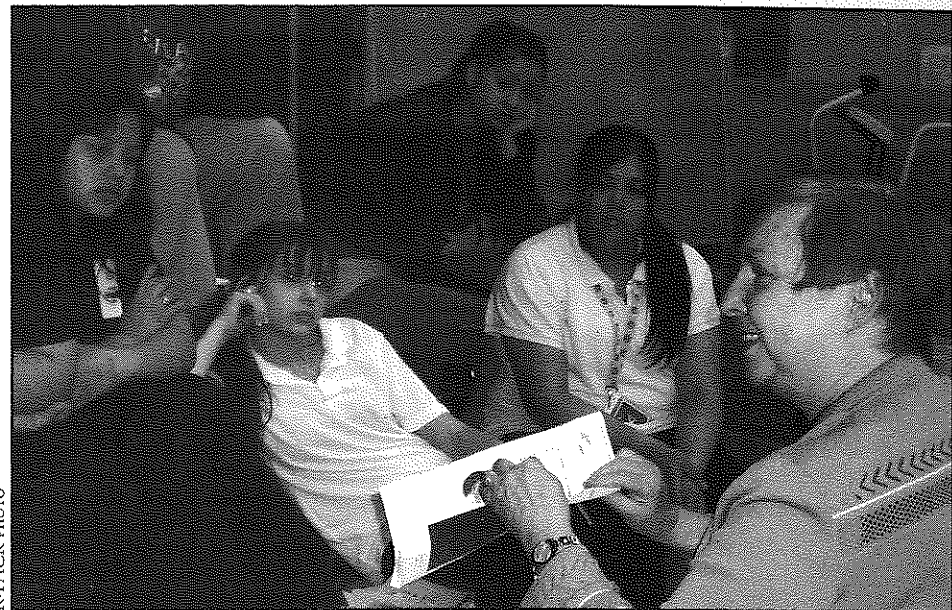
Sharing the joy of reading

On Friday, May 2, Rosedale Middle School hosted its 3rd annual community "Read-In," bringing students, faculty, and members of the Rosedale community together to learn from each other and highlight the importance of reading. R-PACK, the KU School of Social Welfare practicum site based at RMS and an RDA partner, was primarily responsible for organizing the event.

The purpose of the Read-In was three-fold: to emphasize the connection between literacy and life-long success; to demonstrate to students and faculty that the Rosedale community cares about them and desires RMS to be a high-performing school; and to expose members of the community to RMS and allow them to gain a first-hand experience with the school.

This year, 34 volunteers participated in the event. They came from all walks of life – there were hospital executives, bank managers, counselors, county/city elected officials, firefighters, KUMC personnel, social service providers, faith leaders, and more.

Each volunteer was assigned to a



R-PACK PHOTO

Barbara Atkinson (far right), Executive Vice Chancellor for the University of Kansas Medical Center and Executive Dean of the School of Medicine, speaks to students at Rosedale Middle School during the annual Read-In. Atkinson was part of a large volunteer turnout; there were 35 percent more volunteers this year than last year.

class for 30 minutes, during which time they talked and interacted with the students and then read a book or portion of a book to the class. After 30 minutes, each volunteer was switched to a new class and they repeated the same process for the next half-hour.

In addition, thanks to Scholastic and the Heartland Book Bank, more

than 1,000 books were distributed to students as part of the Read-In. By passing out free books, organizers hoped to reinforce the message of the day: reading is important, so read often and read well.

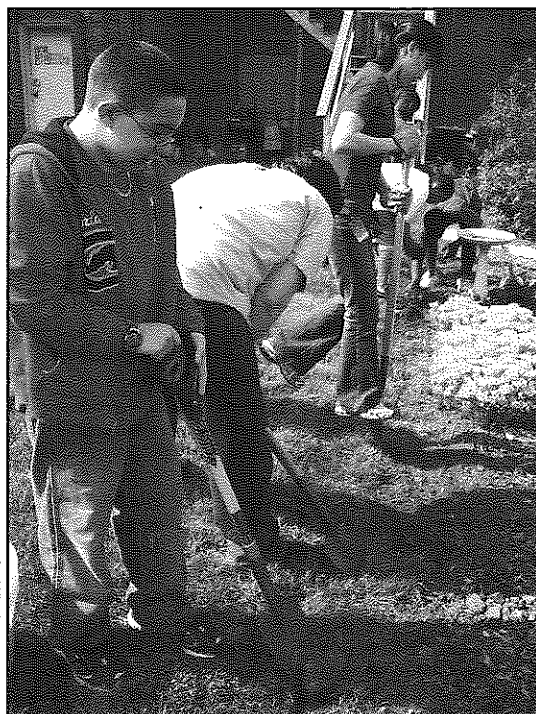
Plans are already underway for next year's Read-In. Make sure you sign up to participate in this wonderful Rosedale event! ☺

R.O.C.K. kids show off their green thumbs

On May 1, the youth in RDA's after-school R.O.C.K. program (Rosedale Opportunities for Community Kids) learned about gardening techniques and planted new flowers in the lot behind RDA's office. Phil Gardos, Rosedale resident and former RDA Board member (and expert gardener), led the session.

At right (from left to right): Aneva Garza, Andrew Thomas, and volunteer Suong Nguyen put hand-to-shovel to prepare the ground for planting.

The 2007-08 school year was the first year in operation for the R.O.C.K. program, which provides educational enrichment and psychosocial groups for 11-15-year-olds. The program engages youth in individual and group activities that are designed to teach teamwork, integrity, respect, self-esteem and appropriate conflict resolution and social skills. Twelve youth participated in the program.



JOEL GOERING PHOTO

ROSEDALE DEVELOPMENT ASSOCIATION

Working in partnership with residents, businesses, and institutions to build a strong and healthy community and to improve the quality of life for those who live, work, and play in Rosedale.

1403 Southwest Blvd.
Kansas City, Kan. 66103
Phone: (913) 677-5097
Fax: (913) 677-3437
www.rosedaleassociation.org
Monday-Friday, 9 a.m.-5 p.m.

Wendy Wilson, Executive Director
Linda Wright, Office Manager
Joel Goering, Community Organizer

Board of Directors,
www.rosedaleassociation.org/
who_board.htm

Newsletter design by Elizabeth Johnston, Lizzardbrand Inc.
www.lizzardbrand.com

RDA goes the extra mile

In addition to its everyday duties as a neighborhood resource center, RDA occasionally takes on an unusual but necessary task to improve the community.

One recent example is the cleaning of the house, porch, and yard at 4304 Booth St. This property had become an eyesore and a nuisance in the community, attracting illegal drug activity and other crime. During the past couple months, KCK police recovered four stolen cars and arrested seven people at the property. The utilities had been turned off for a month and a half, and there was lots of junk in the yard and on the porch.

Obviously, this situation was not healthy or sustainable for our community.

RDA decided to step in and address the problem. Rather than waiting for more crime and blight to proliferate at the property and not wanting to drain police and city resources, RDA's do-it-all office manager, Linda Wright, and long-time Frank Rushton neighborhood resident, Virginia Hughes, spent five hours on one recent Saturday picking up debris and garbage in the front yard, back yard, porch, and driveway.

Linda and Virginia picked up old dirty rugs, diapers, broken and dilapidated furniture that had been left outside, and more. In total, they picked up 20 bags of trash!

These are the kinds of actions that don't make big headlines, but that make a significant difference in improving Rosedale's quality of life and building a healthy and safe neighborhood. Way to go, Linda and Virginia! ☺

Rosedale History Quiz

In each issue of *The Rosedalian*, we will publish a Rosedale historical photograph along with an accompanying question. The first person to answer the question correctly will receive a prize. Submissions must be e-mailed to: rosedalehistoryquiz@yahoo.com or called in to the RDA office: (913) 677-5097. Please provide your name, address, and phone number.

Last month's photograph and question:

Question: What was this building and its function?

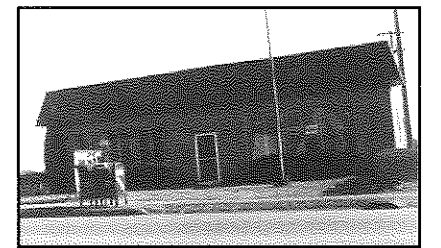
Bonus: Where was it located?

Answer: It was the Rosedale Post Office located near 42nd and Rainbow Blvd.

Winners: Congratulations to Claudette Patterson for answering correctly.

This month's photograph and question:

Question: Name this building from Rosedale's early civic history. The answer will be provided next month.



LARRY ROLLINS PHOTOS

Membership application

Annual business dues: \$100 ☑ Annual household dues: \$15

Name of business or name of household

Address City State ZIP code

Contact person

Day phone Evening phone Fax

E-mail address

Please mail application, along with check made payable to:
Rosedale Development Association
1403 Southwest Blvd.
Kansas City, Kan. 66103