

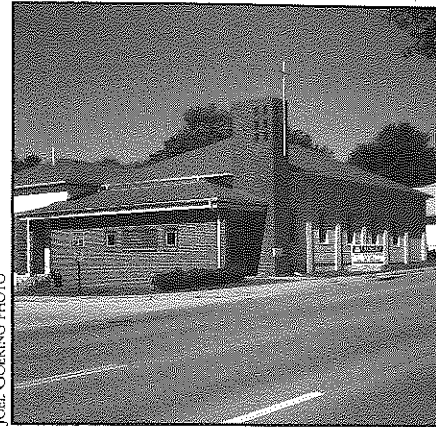
Rosedale Church of the Month

KC Trinity Church of the Nazarene

Address: 4418 Rainbow Blvd., Kansas City, Kan. 66103, **Phone:** (913) 384-1919, **Website:** www.kctrinity.org
By Mindy Hancock, Co-Pastor

History: Trinity Church of the Nazarene was originally located just east of Rosedale on State Line Road when it began in the 1930s. Some time after the congregation moved to its current location, the name of the church was changed to Rainbow Blvd. Church of the Nazarene. By 2001, the congregation had dwindled to just a few elderly people from the area and a few young couples. The pastor at the time, Brian Postlewait, began a re-start effort that breathed life into the dying church. Within two years, the church began attracting young couples, neighborhood children, and many seminary students. Today the church averages 70 in attendance and has only three remaining members from the time before the re-start. A few years ago, the church decided to change back to its original name, "Trinity Church of the Nazarene."

Community Involvement: During the past seven years, the church has launched several neighborhood ministries. At one point, there was a community event almost every night of the week: Kids Club for neighborhood children, ESL classes, Alcoholics



JOEL COERING PHOTO

Victorious, and the Wednesday night community meal called "The Hub." Unfortunately, the very transient nature of our urban congregation has led ministry leaders to other parts of the country and only the Wednesday night meal continues today. Trinity's community involvement now takes a more organic, less programmatic approach. The church has a community food pantry and recently partnered with RDA on two neighborhood clean-up efforts, one at the 42nd St. Mural and one at the Rosedale Arch.

Current Status: Trinity is primarily a younger congregation, with most

attendees in their 20s and 30s, with some in their 40s and 50s, and one 94-year-old. There are several infants and a few toddlers in the nursery each week, and a handful of children in the children's church and Sunday school. Sunday worship is at 9:30 a.m. with Sunday school at 11:15 a.m. Every Wednesday night, the church hosts a community meal at 6:00 p.m. The church has begun to offer monthly service opportunities for people in our congregation, and once a quarter this year there are plans to cancel the regular Sunday service and serve off-site together; on those days, there will be a small service at the church for visitors and for those who are not able to serve.

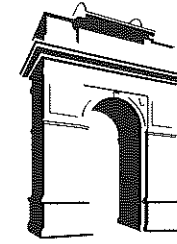
Goals: Trinity seeks to foster true community through mutual vulnerability, accountability, and service to each other and to the wider community. Within the church's mission statement is the invitation to "belong before and as you believe." We take that invitation very seriously and visitors often comment on our hospitality. We hope to see you soon — at our Sunday services, Wednesday night dinner, or in the community. ☞



1403 Southwest Blvd.
Kansas City, Kansas 66103

RETURN SERVICE REQUESTED

Non-Profit Org.
U.S. Postage
PAID
Permit No. 233
Kansas City, KS



The Rosedalian

ROSEDALE DEVELOPMENT ASSOCIATION NEWSLETTER

www.rosedale.org

Learning made fun: 39th St. CREW a haven for Rosedale youth

Last school year, a handful of local children began showing up after school at the University of Kansas Medical Center Dykes Library, located near 39th St. and Cambridge in Rosedale. Many of the students lacked opportunities to participate in structured activities after school, so naturally, they were looking for something to do. The library staff tried to accommodate the young people as best they could, but without a plan in place, it became increasingly difficult to supervise the students and keep them engaged. Often times, they became a distraction to library staff, medical students and other patrons.

The library staff faced a decision: Ban the students from using the library or figure out a way to incorporate them in a productive way. Thankfully, the staff chose the latter option.

Anne Huffman, Head of Public Services and Liaison to the School of Medicine at the Dykes Library, contacted Wendy Wilson, RDA's Executive Director, to discuss existing youth programs and resources in Rosedale and possible collaboration. Before long, meetings were scheduled and plans were being made for an educational after-school program at the library.

Following much preparation, the 39th St. CREW (Community of Rosedale Enrichment Workshop) was born. The program seeks to provide supplemental tutoring and supervised recreation, stimulate a desire for learning and excellence, and expose the children to opportunities in education and careers that are available at KU Medical Center. The resources of the medical center make the program especially appealing; there are lots of opportunities for the students to learn about science and health issues, acquire hands-on lab ex-



DONNA DEVINE PHOTO

Anne Huffman, KU Medical Center staff member and a key player in initiating the 39th St. CREW after-school program, talks to three young participants about the exciting opportunities available at the KU Dykes Library (from left to right): Aaron Acosta, Ramon Johnson, and Reginald Rivers.

perience, and gain awareness of related career paths.

Most of the youth participants are from Rosedale Middle School. The group meets four days a week (Mon.-Thurs.) after school, and is staffed by three students from the KU School of Social Welfare practicum, plus additional volunteers. Currently, about a dozen students are enrolled, but attendance varies. According to Huffman, 3-6 students attend on any given day. The staff hopes to increase attendance as the year progresses.

RDA is excited about the growth potential of the 39th St. CREW and the type of collaboration it represents between KUMC and the Rosedale community. By working together, building relationships, developing common goals, and sharing expertise and resources, the sky's the limit for KUMC and Rosedale.

The youth of the 39th St. CREW are living proof.

To learn more, contact Donna Devine: (913) 627-0312. ☞

Open House for Turkey Creek Environmental Enhancement

Tuesday, Oct. 14
4:00-7:00 p.m.

@ the Landon Center on Aging
36th & Rainbow Blvd.

This will be an open house to display the proposed plan to create a trail system and other environmental enhancements as part of the Turkey Creek flood control project. All businesses and residents are encouraged to attend.

USD #500 Board of Education Public Meeting

Tuesday, Oct. 14
5:00 p.m.

@ Rosedale Middle School
3600 Springfield St.

Come hear what is going on with our public schools and show the Board that you care about children's education in KCK.

New social workers in Rosedale

This is the 10th consecutive year for the Rosedale Community Project, a practicum site for the KU School of Social Welfare. For the past two years, the social work students have been based out of Rosedale Middle School. Their goal is to help under- and uninsured students receive mental health services and overcome barriers to care, in addition to assisting the school and community with other projects to engage parents and improve the quality of life. They are a critical extension of RDA's work in Rosedale and we value their efforts. Welcome!

From left to right: Andrea Cox, Sherrie Mason, Gayle Wilson, Donna Devine (supervisor), Erika Suarez, Stephanie Elliott and Kathryn Hawkins.



Your voice, your vote

The 2008 national election on Nov. 4 is very important to our country's future. Voters will be deciding the next president, as well as U.S. Senate and House races, state Senate and House races, and local ballot measures.

By voting, you will be speaking out and making a difference in your community. Make sure you are registered. Kansas voters can verify their status by going to: <https://myvoteinfo.voteks.org/>. The registration deadline is Oct. 20.

For more information or to register, visit our homepage (www.rosedale.org), stop by our office, or call the Wyandotte County Election Office: (913) 573-8561.

Join the RDA Board of Directors

There are two at-large positions on the RDA Board that are filled annually. One represents the Rosedale business community; the other represents the Rosedale residential community.

Nominations are now being accepted for these positions. Ballots will be mailed in November to current dues-paying members of RDA. The winners

will serve 1-year terms beginning in January 2009.

If you would like to nominate yourself or someone you know for either of the available positions, contact the RDA office.

RDA has a new website URL: www.rosedale.org

Visit us online to get the latest information on Rosedale issues and events; find out the dates and times of community meetings; connect with schools, churches, neighborhood groups, community police and environmental codes officers; learn about our many programs and initiatives, and much more.

RDA is always open to feedback from our constituents. Let us know what you think of our website and if you have ideas on how to improve it.

Advertise with us!

The *Rosedalian* reaches more than 600 businesses and residents in Rosedale. It is now possible to advertise within these pages to your neighbors. Get your name out in the community; offer special discounts; attract custom-

ers. Ads will be available in all sizes from business card to full page. For more information, contact RDA: (913) 677-5097. ☒

ROSEDALE DEVELOPMENT ASSOCIATION

Working in partnership with residents, businesses, and institutions to build a strong and healthy community and to improve the quality of life for those who live, work, and play in Rosedale.

1403 Southwest Blvd.
Kansas City, Kan. 66103
Phone: (913) 677-5097
Fax: (913) 677-3437
www.rosedale.org
Monday-Friday, 9 a.m.-5 p.m.

Wendy Wilson, Executive Director

Linda Wright, Office Manager

Joel Goering, Community Organizer

Board of Directors,
www.rosedale.org/who_board.htm

Newsletter design by Elizabeth Johnston, Lizzardbrand Inc.
www.lizzardbrand.com

Whitmore Park Review

By Angel Dew

This article is the first in a multi-part series on public parks in the Rosedale community.

On a warm afternoon in mid-July, I ventured out with my six-year-old son to explore the parks of Rosedale. Our first stop was Whitmore Park—nestled on the corner between 8th St. and Early St., on Southwest Blvd.

Spread out on a large lot, the park seemed like a village with versatile areas to explore. Large swaying trees castled out a sweet sense of shade and its rare metal slides, wooden climbing fort, and alluring tunnels added to the sensational feel. A paved path curved and twisted around the park revealing more: swings, tunnels to crawl in, and a merry-go-round.

After climbing several slides and see-sawing up and down, down and up, we happened upon a pair of silver foot steps. Looking closer, we discovered that the footsteps sat alongside a stainless-steel metal honey bee. We'd discovered the amazing "Bee Trail!"

Following the clues of the trail, we quickly found ourselves traipsing all over the park, from the see-saw to the basketball courts. What we discovered with each destination was a sweet piece of insight: be kind; be friendly; . . . believe.

To be continued . . . ☒

Dial 3-1-1 for all Unified Government services

Rosedale's Community Police Officers

Serving north of I-35: Officer Amy Allen: (913) 573-8719

Serving south of I-35: Officer Carlos Rodríguez: (913) 573-8704

Rosedale's Code Enforcement Officers

Serving north of I-35: Robert Morgan: (913) 573-8640

Serving south of I-35: Joe Davis: (913) 573-8603

Rosedale History Quiz

In each issue of *The Rosedalian*, we will publish a Rosedale historical photograph along with an accompanying question. The first person to answer the question correctly will receive a prize. Submissions must be e-mailed to: jgoering@rosedale.org or called in to the RDA office: (913) 677-5097. Please provide your name, address, and phone number. If you enjoy these historical photos of Rosedale, please visit www.rosedale.org for more.

Last month's photograph and question:

Question: Where is this building located?

Answer: Across the street from the current RDA office, at 1324 Southwest Blvd. The photo is of George Gratny's convenience store.

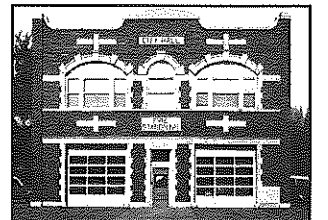
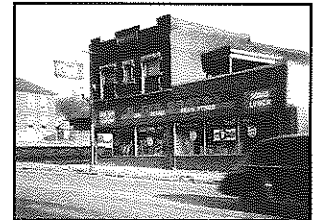
Winners: Congratulations to Jo Clevenger for being the first person to answer correctly.

In this issue, we begin a special series on the three Rosedale fire stations (one is currently in service, the other two now have different uses). The oldest Rosedale fire station is the old No. 10 station, which previously was station No. 1 before Rosedale was consolidated into Kansas City Kansas in 1922. Prior to consolidation, the building also served as Rosedale's City Hall and jail. Located at 1166 Southwest Blvd., old Station No. 10 is now an upscale residence.

Question: When was old Station No. 10 built?

Bonus: What was the name of the garden maintained by the firefighters next to the station?

The answer will be provided next month.



LARRY ROLINS PHOTOS

Membership application

Annual business dues: \$100 ☒ Annual household dues: \$15

Name of business or name of household

Address City State ZIP code

Contact person

Day phone Evening phone Fax

E-mail address

Please mail application, along with check made payable to:
Rosedale Development Association
1403 Southwest Blvd.
Kansas City, Kan. 66103

Rosedale Church of the Month

Lutheran Church of Our Saviour

Address: 4153 Rainbow Blvd., Kansas City, Kan. 66103, **Phone:** (913) 236-6228, **Website:** www.oursaviourkc.org

By Jane Limback, Parish Ministry

Our Saviour Lutheran Church, located a few blocks south of KU Medical Center along Rainbow Blvd., has been a part of the Rosedale community for more than 80 years. The current facility was completed in the late 1950's, with some minor remodeling projects completed since that time. Rev. Frank Eberhart has served as Our Saviour's pastor since 1989.

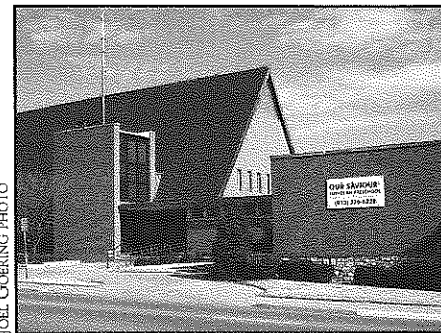
A congregation priority that has been consistently taught throughout Our Saviour's presence in the Rosedale area is the Christian principle that we are saved through faith of God's grace, which is revealed to us through God's word.

Our Saviour operated a Christian Day School for nearly six decades. In 1989, the church discontinued the elementary curriculum at the school, but still maintains the preschool classes to this day.

As a congregation, we respond to God's love by reaching out to the community through:

■ **hospitality house**

Adult family members who have relatives in one of the area hospitals and live beyond a 35-mile radius from



Kansas City are invited to stay in the hospitality house.

■ **food pantry**

The food pantry assists families in need who reside in the zip code areas of 66103 (Rosedale) or 66205 (Westwood, Kan.). The food pantry is open Mon.-Wed., 9:00-11:15 a.m.

■ **bread ministry**

A couple of bakeries donate bread and pastries and are available to the community throughout the week.

■ **midweek**

Children enrolled in Kindergarten through fifth grade are invited to Wednesday night midweek activities of the sharing of a Bible story, games, songs, and crafts. The fun begins at 5:00 and concludes at 6:30 p.m. after

dinner. A bus is available to pick up neighborhood children.

■ **preschool classes for 3-5 year olds**

A Christ-centered program with a variety of different activities geared for children to grow and develop as a child of God.

■ **VBS**

Vacation Bible School is a week-long event held in either June or July.

■ **devotion line**

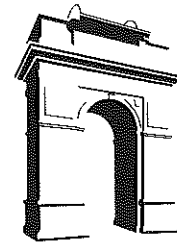
A daily devotional meditation is available by calling (913) 432-9191.

You are cordially invited to join us for any of the upcoming events:

- Thanksgiving worship, November 27, 10:00 a.m.
- Advent services, December 3, 10, and 17, 7:00 p.m.
- Bethlehem Village – December 7, 9:15 a.m.
- Christmas Eve service – December 24, 6:00 p.m. and 11:00 p.m.
- Weekend worship opportunities – Saturday, 5:30 p.m.; Sunday, 8:00 a.m. and 11:00 a.m. Bible class, 9:15 a.m.

Please call the church office for additional information regarding the community outreach opportunities or upcoming events: (913) 236-6228. ☒

Non-Profit Org.
U.S. Postage
PAID
Permit No. 233
Kansas City, KS



The Rosedalian

ROSEDALE DEVELOPMENT ASSOCIATION NEWSLETTER

www.rosedale.org

Out-of-state company targets small businesses

By Dr. Gerard Lozada, Rosedale Vision Center

Does your business use a credit card processor? If so, you may have signed a lease with one of the subsidiaries of a company based out of New York, N.Y. called Northern Leasing Systems Inc. (NLSI). In 2003, privacy laws changed and all businesses had to update their credit card processing equipment. Lease Finance Group (LFG), one of the NLSI subsidiaries, came to Rosedale and I signed a 60-month lease in July 2003. There were problems during the lease period, but the biggest problem began once the lease ended.

Unable to find an address to return their equipment, I ran an Internet search using the key words "Lease Finance Group" which produced many web links detailing fraud by this company. The list of their questionable business practices was long and included: deduction of additional lease payments after a lease has expired, businesses unable to prove the return of equipment and then receiving replacement charges of more than \$2,000, frequent "robo calls" demanding payment, and LFG damaging its clients' credit.

Using this information, I tried to avoid problems and sent the equipment back via UPS with proof of receipt and put a stop payment on the monthly deductions of the lease payment. According to the service representative who I spoke to, an additional lease payment would be charged within 30 days of receipt of the equipment. I sent the equipment back in early August, which was too late to avoid a September payment and thus I ended up paying an extra two months on a 60-month lease despite not using, nor possessing, the equipment.

In October 2003, Lease Finance Group attempted to deduct an

additional lease payment three different times for three different amounts from my business checking account and sent an invoice by mail billing a fourth amount. I called the phone number on the invoice and was told that the equipment sent back was incomplete and that the lease would continue until everything was returned. Attempts to speak to a supervisor failed and, after running an Internet search using the invoice's address for Lease Finance Group, the name of a medical equipment leasing company — appeared for that address. I spoke to Phillip Kaser, the manager of our local Bank Midwest on Rainbow Blvd., and he reminded me that even if I could prove that all of the equipment had been returned, LFG would find a different angle to keep billing.

If any of this sounds familiar to you, please contact RDA so that they can begin to measure the problem locally. Other business owners may think that they are alone, but a quick Internet search shows that these are actually nationwide practices by this company. Even if the name Lease Finance Group does not sound familiar, be careful. The many subsidiaries of Northern Leasing Systems Inc. may have different names, but all use the same fraudulent business practices.

Fortunately, resources are available to help business owners. Several business owners around the country, including a company out of Missouri, have spearheaded a class action lawsuit against Northern Leasing Systems Inc. and its subsidiaries and have started a website, www.merchantpointofsale.com, which provides many details about the fraud this company regularly commits nationwide, the names of its subsidiar-

ies, and a copy of the 15-count class action lawsuit. Remember, if you are a small business owner and find yourself tangled up in this problem, you did not make a poor business decision; you have had fraud committed against you and your business by a company involved in "racketeering and organized crime," according to the lawsuit.

For more information, visit the following websites: seattletimes.nwsources.com/html/localnews/2008284297_cardtrap19m0.html and www.merchantpointofsale.com/mbfscam/mbfscam.php. ☒

**RDA's 2007
Annual Report
is now available online:
www.rosedale.org.**



 **Rosedale**
DEVELOPMENT ASSOCIATION

1403 Southwest Blvd.
Kansas City, Kansas 66103

RETURN SERVICE REQUESTED

Christmas in October builds community in Rosedale

Continuing an annual tradition, more than 130 volunteers from RDA, the University of Kansas Medical Center, the University of Kansas Hospital, and Rainbow Menonite Church participated in Rosedale's version of Christmas in October last month. The volunteers assisted disabled, elderly, and other low-income homeowners with improvements and upkeep to their homes so they can continue to live in dignity and security.

This year, repairs were completed on eight different Rosedale homes. Flower bulbs were also planted in a grassy lot on the corner of Southwest Blvd. and Mission Rd., across from the old firestation.

The involvement of the KU Medical Center and KU Hospital is critical to the program's success every year. "The Rosedale Christmas in October project is an extremely fulfilling way to give back to the local community," said Don Rau, KUMC Director of Facilities. "[It] creates a great environment for both Hospital and University employees, as well as students, to help others, make new friendships and do what is right for those who need our help."

Other Christmas in October partners included Strasser's Hardware and the Racing Association of Kansas



This friendly group of volunteers made repairs at the home of Marvin Orndorf (man with suspenders in middle) during Rosedale's Christmas in October project.

(TRAK) East. Thank you to these organizations for their financial and material support.

Thank you to the house captains, as well, who conducted preparatory assessments, gathered equipment and supplies, and supervised volunteers.

Christmas in October, Inc. provides materials and volunteers to make needed home repairs and upgrades in older, urban core neighborhoods. Typical tasks include painting, weeding, trimming bushes and shrubs, fixing porches and steps, and more. Homeowners are usually elderly, disabled, or otherwise low-

income and not able to undertake the repairs on their own. Thus, the program helps maintain and improve the housing stock and property values in the community, while simultaneously serving people in need.

To qualify, residents must own their home and have their utilities turned on. In Rosedale, referrals for the program come from RDA staff, neighborhood groups, churches, U.G. codes officials, and the homeowners themselves. Representatives from RDA and the two KU entities evaluate each referral to determine eligibility. ☑

Feed-a-Family program returns next month

As the U.S. economy teeters toward recession – with accompanying layoffs, decreasing home values, and economic stagnation – many people in Rosedale and throughout the metropolitan area could be feeling the pinch this holiday season.

In response, as we have for the past 23 years, RDA will partner with the KU Fraternal Order of Police Lodge No. 37, residents and businesses to provide holiday gift baskets to families and senior citizens in Rosedale as part of the annual Feed-a-Family program.

RDA receives referrals for the program from neighborhood groups, schools, churches, and others. After a brief screening process, RDA contacts each recipient and tries to determine the specific needs of each family or older

adult. We then solicit donations of cash and non-perishable food items and compile the donations into baskets for each recipient. A few days before Christmas, the families then pick up their basket at the RDA office. Baskets are delivered to those who are homebound.

You can get involved in this important effort in the following ways:

- Donate non-perishable food items and household products.
- Make a cash donation.
- Sponsor a complete basket.
- Volunteer to assist with sorting and distribution.

Stay tuned for more details and a list of needed donation items. To make a referral and/or to get involved in the Feed-a-Family program, call the RDA office: (913) 677-5097. ☑

ROSEDALE DEVELOPMENT ASSOCIATION

Working in partnership with residents, businesses, and institutions to build a strong and healthy community and to improve the quality of life for those who live, work, and play in Rosedale.

1403 Southwest Blvd.
Kansas City, Kan. 66103
Phone: (913) 677-5097
Fax: (913) 677-3437
www.rosedale.org
Monday-Friday, 9 a.m.-5 p.m.

Wendy Wilson, Executive Director

Linda Wright, Office Manager

Joel Goering, Community Organizer

Board of Directors,
www.rosedale.org/
who_board.htm

Newsletter design by Elizabeth Johnston, www.lizardbrand.com

Rosedale Briefs

Project Lead Safe KCK

The Kansas Department of Health and Environment, in cooperation with the Unified Government, can help you address lead-based paint hazards in your home for FREE in order to prevent lead poisoning in young children. A state-certified risk assessor will inspect your home and determine the services needed to stabilize or remove the lead-based paint in your home. Types of work may include replacing windows and doors, as well as re-painting. To check your eligibility or for more information, call: (913) 262-0796 or visit: www.unleadedks.com.

Rosedale Obituary

Estella "Peggy" Horton, 83, a beloved, long-time member of the Rosedale community, passed away Oct. 16. Peggy was a native of Gilman City, Mo., but lived most of her life in Kansas City, Kan. She devoted her life to her family, her church, and her community. She was an active member of the Rosedale Congregational Church and the Frank Rushton Neighborhood Association, and many knew her kind, loving spirit. She will be sorely missed.

Microchip Clinic

On Sat., Dec. 6, from 10:00 a.m.-1:00 p.m., the Pet Connection will sponsor a discount microchip clinic at RDA's Koch Center (1401 Southwest Blvd.). Cost: \$25. Microchips are an important way to recover your pet in case it gets lost. Questions? Call: (913) 671-7387.

Thanksgiving Worship Service

The annual Rosedale Thanksgiving worship service, sponsored by the Rosedale Ministerial Alliance, will be held on Tuesday, Nov. 25, 7:00 p.m., at Rosedale Congregational Church (4326 Lloyd St.). It will be an ecumenical service for the community. Come give thanks and celebrate with your Rosedale neighbors.

Dial 3-1-1 for all Unified Government services

Rosedale's Community Police Officers

Serving north of I-35: Officer Amy Allen: (913) 573-8719

Serving south of I-35: Officer Carlos Rodriguez: (913) 573-8704

Rosedale's Code Enforcement Officers

Serving north of I-35: Robert Morgan: (913) 573-8640

Serving south of I-35: Joe Davis: (913) 573-8603

Rosedale History Quiz

In each issue of *The Rosedalian*, we will publish a Rosedale historical photograph along with an accompanying question. The first person to answer the question correctly will receive a prize. Submissions must be e-mailed to: jgoering@rosedale.org or called in to the RDA office: (913) 677-5097. Please provide your name, address, and phone number. If you enjoy these historical photos of Rosedale, please visit www.rosedale.org for more.

Last month's photographs & questions:

Question: When was old Station No. 10 built?

Answer: 1912.

Bonus: What was the name of the garden maintained by the firefighters next to the station?

Answer: Pike Pole Park.

Winner: No one answered either question correctly.

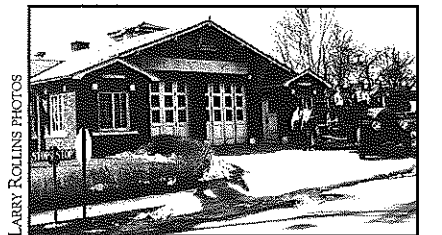
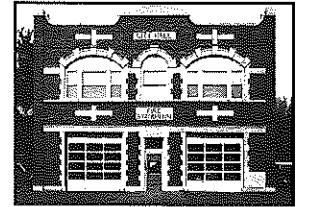
This month's photograph & questions:

In this issue, we continue a special series on Rosedale fire stations. Last month, we focused on old Station No. 10, located on Southwest Blvd. This month, we move "up the hill" to old Station No. 12, located near the NW corner of 43rd Ave. and Rainbow Blvd.

Question: When was old Station No. 12 built?

Bonus: What is Station No. 12's current use?

The answer will be provided next month.



Membership application

Annual business dues: \$100 ☑ Annual household dues: \$15

Name of business or name of household

Address City State ZIP code

Contact person

Day phone Evening phone Fax

E-mail address

Please mail application, along with check made payable to:
Rosedale Development Association
1403 Southwest Blvd.
Kansas City, Kan. 66103